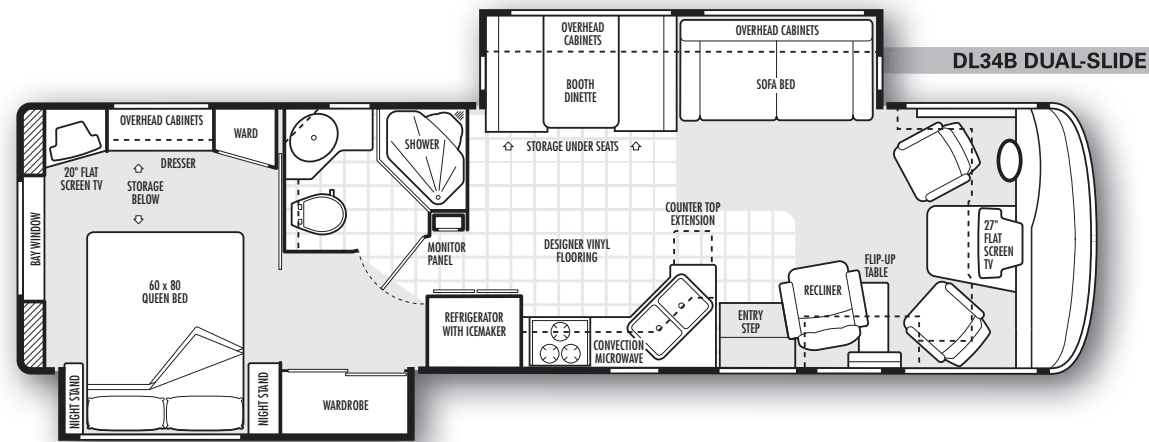
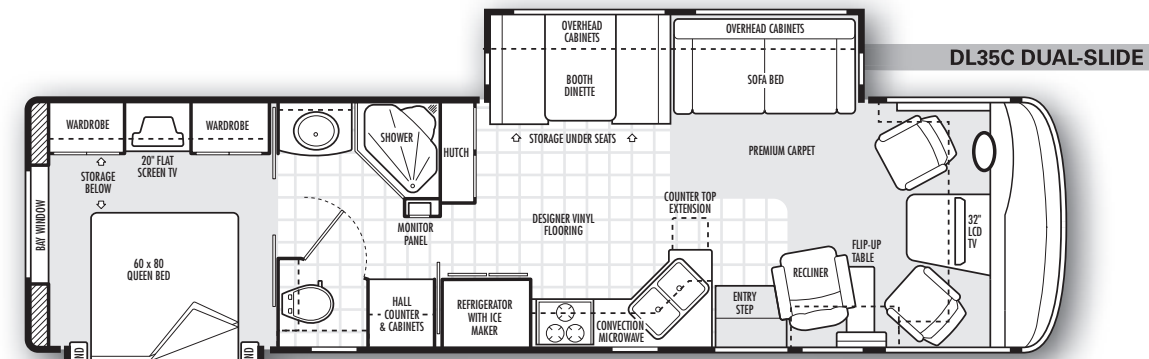
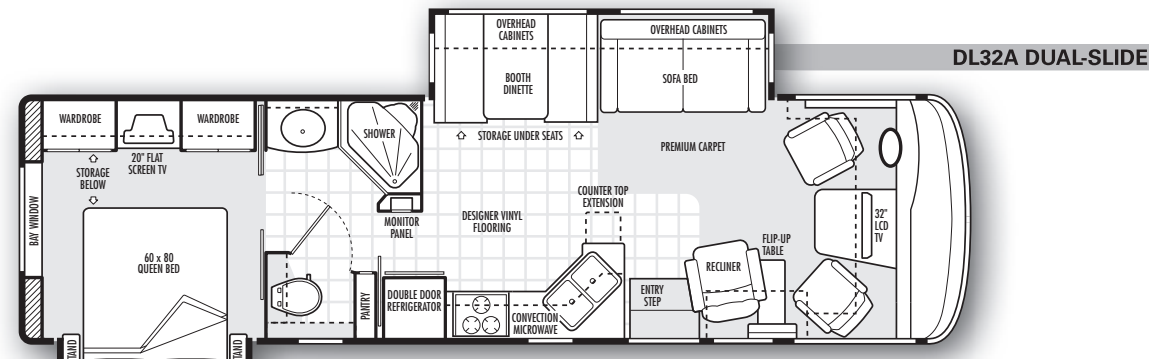
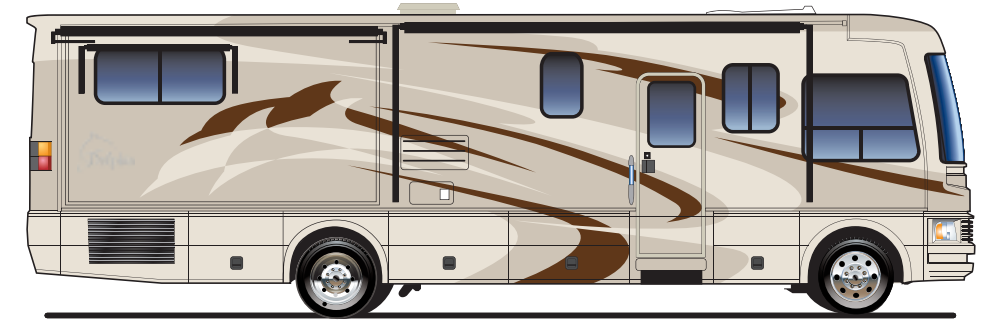


# FLOOR PLANS

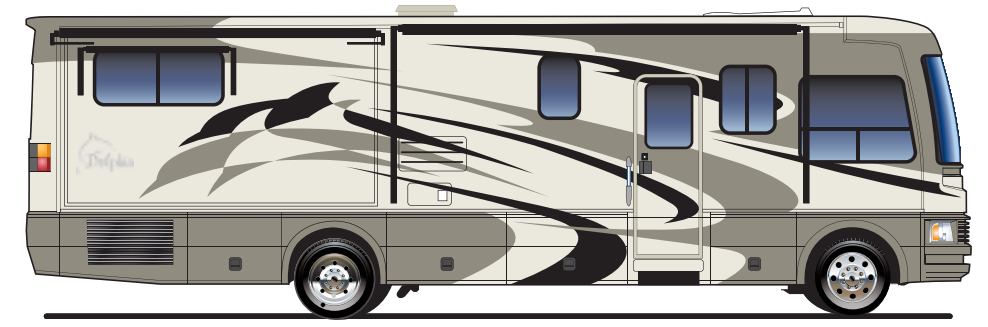


# EXTERIORS

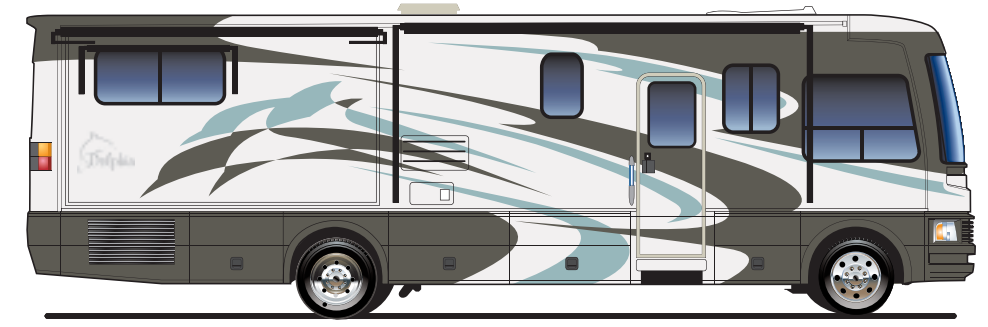
Cocoa Beach



Harbor Nightfall



Tropic Canopy



**DOLPHIN**

www.nationalrv.com  
3411 N. Perris Blvd  
Perris, CA 92571  
1.800.322.6007



©2007 by National RV, Inc. All information, illustrations and specifications in this publication are valid at time of printing. National RV reserves the right to make changes at any time, without notice, to any equipment, specifications, features, options, packages or models depicted in this brochure. 08/07DLV1



# FORD CHASSIS

| MEASUREMENTS                      | DL32A - F              | DL34B - F              | DL35C - F              |
|-----------------------------------|------------------------|------------------------|------------------------|
| Overall length                    | 34'-1"                 | 35'-5"                 | 36'-5"                 |
| Overall height*                   | 11'-9"                 | 11'-9"                 | 11'-9"                 |
| Exterior width                    | 101¼"                  | 101¼"                  | 101¼"                  |
| Interior height                   | 82"                    | 82"                    | 82"                    |
| Interior width                    | 97½"                   | 97½"                   | 97½"                   |
| Fuel Capacities                   | 75 gal.                | 75 gal.                | 75 gal.                |
| Water Heater                      | 10 gal.                | 10 gal.                | 10 gal.                |
| Gray Tank                         | 41 gal.                | 65 gal.                | 65 gal.                |
| Black Tank                        | 50 gal.                | 47 gal.                | 47 gal.                |
| Fresh Water Capacity <sup>b</sup> | 90 gal.                | 90 gal.                | 90 gal.                |
| Propane Gas (volume w.c.)         | 24 gal.                | 24 gal.                | 24 gal.                |
| GVWR                              | 22,000                 | 22,000                 | 22,000                 |
| GCWR                              | 26,000                 | 26,000                 | 26,000                 |
| GAWR (front)                      | 7,500                  | 7,500                  | 7,500                  |
| GAWR (rear)                       | 14,500                 | 14,500                 | 14,500                 |
| Wheelbase                         | 208"                   | 228"                   | 228"                   |
| Tires                             | 235/70R 22.5G          | 235/70R 22.5G          | 235/70R 22.5G          |
| Tow Hitch Capacity                | 5,000 lbs.             | 5,000 lbs.             | 5,000 lbs.             |
| Axle Ratio                        | 5.38:1                 | 5.38:1                 | 5.38:1                 |
| Peak HP                           | 362 HP @ 4,750 RPM     | 362 HP @ 4,750 RPM     | 362 HP @ 4,750 RPM     |
| Peak Torque                       | 457 lb./ft @ 3,250 RPM | 457 lb./ft @ 3,250 RPM | 457 lb./ft @ 3,250 RPM |

# WORKHORSE CHASSIS

| MEASUREMENTS                      | DL32A - W22            | DL34B - W22            | DL35C - W22            | DL35C - W24            |
|-----------------------------------|------------------------|------------------------|------------------------|------------------------|
| Overall length                    | 34' -1"                | 35'-5"                 | 36'-5"                 | 36'-5"                 |
| Overall height*                   | 11' -9"                | 11'-9"                 | 11'-9"                 | 11'-9"                 |
| Exterior width                    | 101¼"                  | 101¼"                  | 101¼"                  | 101¼"                  |
| Interior height                   | 82"                    | 82"                    | 82"                    | 82"                    |
| Interior width                    | 97½"                   | 97½"                   | 97½"                   | 97½"                   |
| Fuel Capacities                   | 75 gal.                | 75 gal.                | 75 gal.                | 75 gal.                |
| Water Heater                      | 10 gal.                | 10 gal.                | 10 gal.                | 10 gal.                |
| Gray Tank                         | 41 gal.                | 65 gal.                | 65 gal.                | 65 gal.                |
| Black Tank                        | 50 gal.                | 47 gal.                | 47 gal.                | 47 gal.                |
| Fresh Water Capacity <sup>b</sup> | 90 gal.                | 90 gal.                | 90 gal.                | 90 gal.                |
| Propane Gas (volume w.c.)         | 24 gal.                | 24 gal.                | 24 gal.                | 24 gal.                |
| GVWR                              | 22,000                 | 22,000                 | 22,000                 | 24,000                 |
| GCWR                              | 26,000                 | 26,000                 | 26,000                 | 30,000                 |
| GAWR (front)                      | 8,000                  | 8,000                  | 8,000                  | 9,000                  |
| GAWR (rear)                       | 15,000                 | 15,000                 | 15,000                 | 15,500                 |
| Wheelbase                         | 208"                   | 228"                   | 228"                   | 228"                   |
| Tires                             | 235/80R 22.5G          | 235/80R 22.5G          | 235/80R 22.5G          | 235/80R 22.5G          |
| Tow Hitch Capacity                | 5,000 lbs.             | 5,000 lbs.             | 5,000 lbs.             | 5,000 lbs.             |
| Axle Ratio                        | 5.86:1                 | 5.86:1                 | 5.86:1                 | 5.86:1                 |
| Peak HP                           | 340 HP @ 4,200 RPM     | 340 HP @ 4,200 RPM     | 340 HP @ 4,200 RPM     | 340 HP @ 4,200 RPM     |
| Peak Torque                       | 455 lb./ft @ 3,200 RPM | 455 lb./ft @ 3,200 RPM | 455 lb./ft @ 3,200 RPM | 455 lb./ft @ 3,200 RPM |

## FORD CHASSIS SPECIFICATIONS

Ford® Super Duty F-53 Chassis  
Ford® Triton V-10 (6.8L EFI) Engine  
Ford® Torq-Shift 5-speed Automatic Overdrive Transmission  
Power Hydraulic 4-wheel disc ABS with HydroBoost  
Tapered leaf spring suspension with gas pressurized premium Bilstein® shock absorbers and front track bar  
Column Mounted Shifter  
Polished Aluminum, front and rear with steel Inner on rear  
5,000 lb. Class III hitch with 7-pin electrical connector<sup>c</sup>  
Ford® 130 Amp alternator  
**FORD WARRANTY**  
Ford® Chassis Warranty 3 years/36,000 mi.  
Ford® Torq-Shift Transmission Warranty 3 years/36,000 mi.  
Ford® Super Duty Engine Warranty 3 years/36,000 mi.

## WORKHORSE CHASSIS SPECIFICATIONS

GM Vortec™ 8100 V-8 (8.1L) Engine  
Allison® 1000 Series 6-speed Automatic Overdrive & Electronic Control Transmission  
4-wheel disc ABS system with Hydromax power boost  
Single stage constant rate parabolic w/aux. Like-Air™ spring, front and rear stabilizer bar and Bilstein® monotube gas-charged shocks  
Column shifter W-22 models only  
Push Button Shifter W-24 models only  
Polished Aluminum, front and rear with steel Inner on rear  
5,000 lb. Class III hitch with 7-pin electrical connector<sup>c</sup>  
Workhorse™ 145 Amp alternator  
**WORKHORSE WARRANTY**  
Workhorse™ Chassis Warranty 3 years/36,000 mi.  
Workhorse™ Limited Powertrain Warranty 5 years/100,000 mi.  
Workhorse™ Transmission Warranty 5 years/200,000 mi.

<sup>a</sup> Overall height is based on standard specifications and does not include optional equipment added. Models equipped with Kingdome® satellite add 8" to height.

<sup>b</sup> Fresh Water Capacity includes the capacity of the water heater.

<sup>c</sup> Actual towing capacity is dependent on load and tow circumstances are based on GVWR, GAWR and GCWR.

# STANDARD FEATURES

## COACH BODY CONSTRUCTION

DuraFrame® patented steel sub floor construction  
Steel framed laminated floor  
Steel framed crowned laminated fiberglass roof  
Steel framed laminated fiberglass high gloss sidewalls  
Steel cockpit overhead construction  
Front and rear molded high gloss fiberglass caps and integrated bumper assembly  
One-piece tinted windshield  
Electric slide-out rooms (flush floor on lounge slide models only)  
Aluminum exterior storage compartment doors with gas struts, side-hinged for easy access on most applications  
Steel framed exterior storage compartment with insulated floors  
Black aluminum rear ladder  
Awning rail/rain gutter with drip spouts  
Automotive undercoating  
Steel insulated front bulkhead  
Custom full body paint available in choice of three color schemes  
Grey "National RV" logo on rear cap  
"Big Box" construction with 82" interior height  
Fuel fill door in rear bumper

## FURNITURE

Driver seat with adjustable armrests  
Kustom-Fit® soft touch UltraLeather™ 6-way power driver seat with swivel base  
Kustom-Fit® soft touch UltraLeather™ manual passenger seat with swivel base  
Kustom-Fit® Wonder-Bed® fabric sleeper sofa with slide-in armrests  
Kustom-Fit® freestanding vinyl swivel recliner chair with foot rest  
**APPLIANCES & ACCESSORIES**  
13 cu. Ft. 4-door Dometic® black refrigerator w/ ice maker (N/A DL32A)  
10 cu. ft. double door Dometic® black refrigerator with ice maker (DL32A only)  
High output three burner cook top with drawers below  
Convection microwave oven with carousel, built-in light and fan  
TV antenna w/ Cable TV outlets in living room and bedroom areas  
Multiple telephone jacks  
32" LCD screen TV in living area (overhead cockpit)  
19" LCD TV in bedroom with front A/V jacks  
Video control box with antenna boost  
DVD player with remote control  
Pre-wired for satellite dish

## COCKPIT FEATURES

Big button AM/FM stereo and CD player with four speakers and input / charger jack for full iPod® connectivity and MP3 support  
Battery voltage meter in monitor panel  
GFI protected electrical circuit  
Courtesy light at entry-door switch panel  
7-pin trailer hitch connector  
**WINDOWS, DOORS & AWNINGS**  
Dual pane radius tinted safety glass windows  
Electric Patio awning with black metal cover and hardware  
Bedroom rear picture window  
30" wide entrance door with clear glass, shade and screen door  
Power entrance step with light and anti-skid surface  
Ventilated windows on endwalls of lounge slide-outs  
Slide-out topper awnings  
Window and tinted skylight in bathroom room  
**INTERIOR**  
Natural Maple finish paneling and doors  
Padded Vinyl ceiling  
Telestrut hardware on overhead doors and positive catches  
Full extension drawers with ball bearing roller guide  
Day/night shades with designer valances w/ easy-grip rails  
**LIVING AREA**  
Booth dinette with slide-out storage baskets under seats  
Plush carpet with deluxe pad  
Hutch and overhead with beveled mirror (DL35C only)  
**KITCHEN AREA**  
Slide-out pantry (DL32A only)  
Premium solid surface kitchen countertop extension, accented backsplash and flush mount stove cover  
Storage for stove top covers under sink  
Backsplash with scored Premium Solid Surface™ and glass inserts  
Large stainless steel under mount dual sink  
Premium Solid Surface sink covers  
Wastebasket  
Designer vinyl flooring  
Mini-blind with valance  
Silverware organizer tray  
**BATH AREA**  
Designer vinyl flooring  
Decorative glass shower door  
Laminate bathroom countertop with decorative edge  
Stainless steel bathroom sink  
Medicine cabinet

Three water pump switches (kitchen, bathroom and exterior service compartment)  
Battery voltage meter in monitor panel  
GFI protected electrical circuit  
Courtesy light at entry-door switch panel  
7-pin trailer hitch connector  
**WINDOWS, DOORS & AWNINGS**  
Dual pane radius tinted safety glass windows  
Electric Patio awning with black metal cover and hardware  
Bedroom rear picture window  
30" wide entrance door with clear glass, shade and screen door  
Power entrance step with light and anti-skid surface  
Ventilated windows on endwalls of lounge slide-outs  
Slide-out topper awnings  
Window and tinted skylight in bathroom room  
**INTERIOR**  
Natural Maple finish paneling and doors  
Padded Vinyl ceiling  
Telestrut hardware on overhead doors and positive catches  
Full extension drawers with ball bearing roller guide  
Day/night shades with designer valances w/ easy-grip rails  
**LIVING AREA**  
Booth dinette with slide-out storage baskets under seats  
Plush carpet with deluxe pad  
Hutch and overhead with beveled mirror (DL35C only)  
**KITCHEN AREA**  
Slide-out pantry (DL32A only)  
Premium solid surface kitchen countertop extension, accented backsplash and flush mount stove cover  
Storage for stove top covers under sink  
Backsplash with scored Premium Solid Surface™ and glass inserts  
Large stainless steel under mount dual sink  
Premium Solid Surface sink covers  
Wastebasket  
Designer vinyl flooring  
Mini-blind with valance  
Silverware organizer tray  
**BATH AREA**  
Designer vinyl flooring  
Decorative glass shower door  
Laminate bathroom countertop with decorative edge  
Stainless steel bathroom sink  
Medicine cabinet

## BEDROOM AREA

Plush carpet with deluxe pad  
Day/night shades with designer valances  
Cedar lining in wardrobe and bed storage compartment  
Automatic lighted wardrobe with mirrored doors and hamper below  
Bedsread, pillows and shams  
Slide-out queen bed with under bed storage compartment  
Sandpiper Deluxe™ residential-style queen size pillow top mattress  
**PLUMBING SYSTEMS**  
Heated systems compartment with easy access to hook-ups  
On demand water system w/ water filter and water pump  
Holding tank rinse system (black tank only)  
Winterization antifreeze inlet to pump  
Outside shower located in service compartment  
Water heater bypass valve  
Pressurized water fill with integrated regulator  
10 gallon, quick-recovery water heater with direct spark ignition (gas/electric)  
Single lever faucet with side sprayer  
One-piece fiberglass shower with seat and fixed shower head  
Low profile porcelain toilet (DL32A,DL34B)  
High profile porcelain toilet with sprayer (DL35C Only)  
Single lever bathroom faucet  
Pre-plumbed for optional washer/dryer (DL35C only)  
**SAFETY/SECURITY**  
Fog lights and Daytime running lights (CSA units only)  
Driver and passenger three point seatbelts  
Deadbolt lock on entry door  
Exterior & Interior entry assist handles  
Fire extinguisher  
Smoke, carbon monoxide (CO) and propane leak detectors  
Emergency exit windows  
**CLIMATE CONTROL**  
Thermostatically controlled 11,000 BTU ducted low profile black roof A/C (Rear)  
13,500 BTU ducted low profile black roof A/C (Front)  
35,000 BTU electronic ignition furnace & ducted heating system  
Pre-wire for 12V Fan-Tastic® Vent with wall thermostat & rain sensor in bedroom  
12V Fan-Tastic® Vent with wall thermostat & rain sensor in galley  
12V roof exhaust fan in bathroom  
Non-powered roof vent in bedroom  
Dash automotive heating and air conditioner system with defroster

# OPTIONAL FEATURES

## COACH BODY CONSTRUCTION

Protective film front mask  
TeleSlide Option (N/A on DL34B)  
LX Package  
Workhorse 24,000lb Chassis' (DL35C only)  
**FURNITURE**  
6-way power adjustment and power foot rest on passenger seat  
Kustom-Fit® Wonder-Bed® soft touch UltraLeather™ sleeper sofa with slide-in armrests  
Free Standing Swivel Leather Euro Recliner w/ foot rest  
Kustom-Fit® freestanding soft touch UltraLeather™ swivel recliner chair with foot rest  
**APPLIANCES & ACCESSORIES**  
High output three burner cook top with range/oven  
Kingdome® automatic stationary satellite dish  
**COCKPIT FEATURES**  
Combination washer/dryer (DL35C only)  
**ELECTRICAL SYSTEMS**  
Sirius™ satellite radio module with 6 month subscription  
7.0 kW Onan® Marquis Gold series generator (required for optional 15,000 roof A/C)  
**WINDOWS, DOORS & AWNINGS**  
Living room and bedroom window awning package  
Exterior windshield sun screens  
**INTERIORS**  
Natural Cherry finish paneling and doors  
Dinette table with wall cabinet, built-in table extension, two high-back wooden chairs and two wooden folding chairs (N/A DL32A)  
**CLIMATE CONTROL**  
Two 15,000 BTU ducted low profile black roof A/C w/ heat pump (requires 7.0 kW generator option)  
12V Fan-Tastic® Vent with wall thermostat & rain sensor in bedroom  
**LX PACKAGE**  
Two tone leather sofa  
Premium Solid Surface™ countertops through-out  
Home theater entertainment package (includes DVD digital receiver and subwoofer/speaker system)  
Three camera color rear vision system with rear cap and side view cameras  
Hand held Garmin GPS navigation system  
Manual driver/passenger side window sun shades