



T W O T H O U S A N D O N E



Specifications • Floorplans

The new Caribbean by National RV is in a class of its own. With a unique "compact" configuration, the Caribbean offers discerning diesel pusher enthusiasts the first luxury motor home that sports smooth yet nimble handling. Its "go anywhere" design allows the Caribbean to fit into spots most luxury coaches can only dream of. On top of that, the Caribbean is equipped with the powerful Cummins[®] 260 HP engine and the revolutionary 1000 series Allison 5-speed transmission—the smoothest shifting overdrive in the industry—making Caribbean one of the most fuel efficient motor homes on the road. Drive a Caribbean for yourself... You'll see why it leaves other luxury coaches in the dust.

PAGE

Standard Features

2 Body Construction

3 Interiors

4 Chassis, Engine and Suspension

5 Appliances and Accessories

6 Heating, Vents and Air Conditioning

6 Windows, Doors and Awnings

7 Safety Features

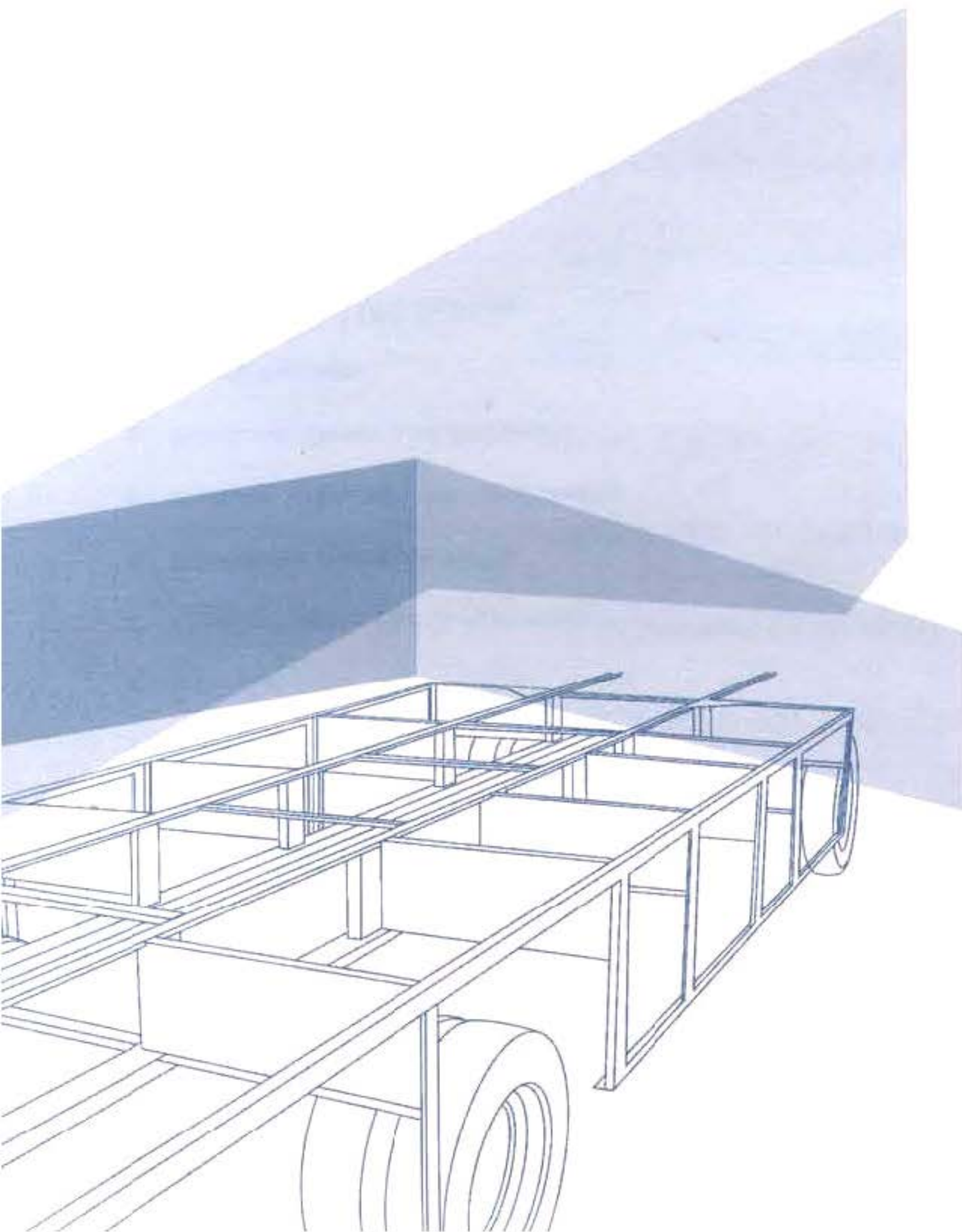
7 Plumbing and LPG Systems

7 Optional Features

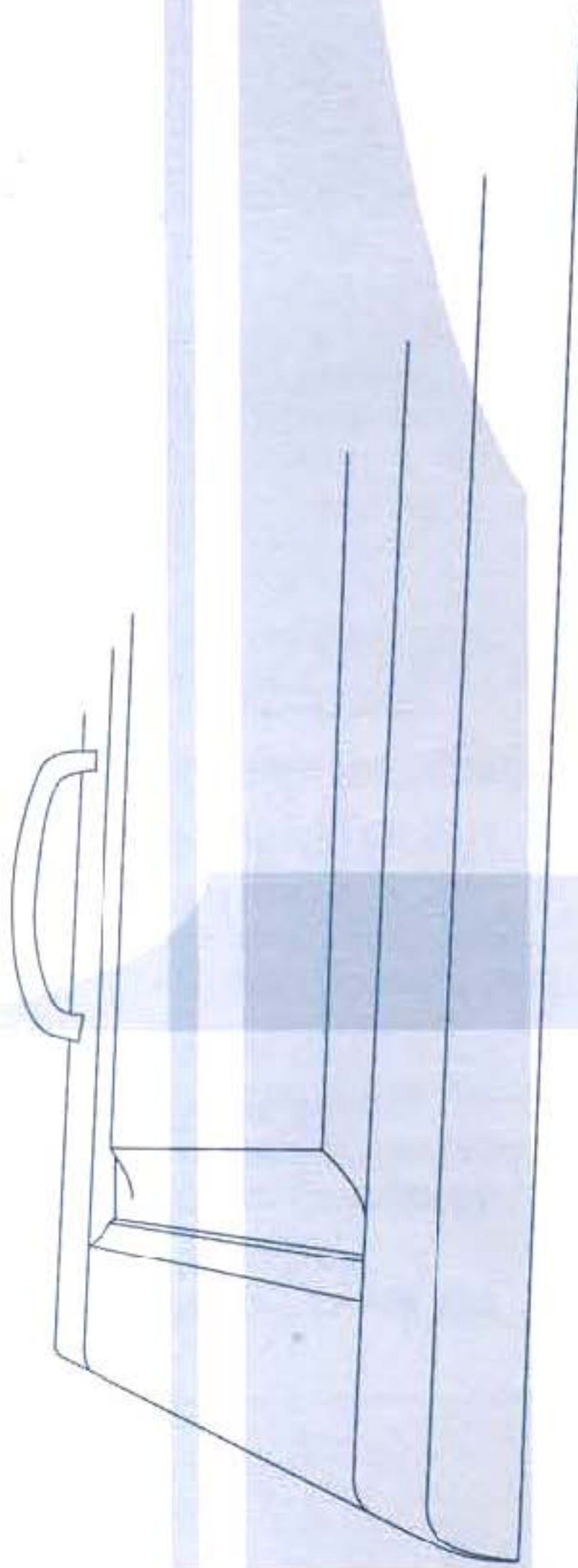
8 Floorplans

9 Measurements

♦ Contents

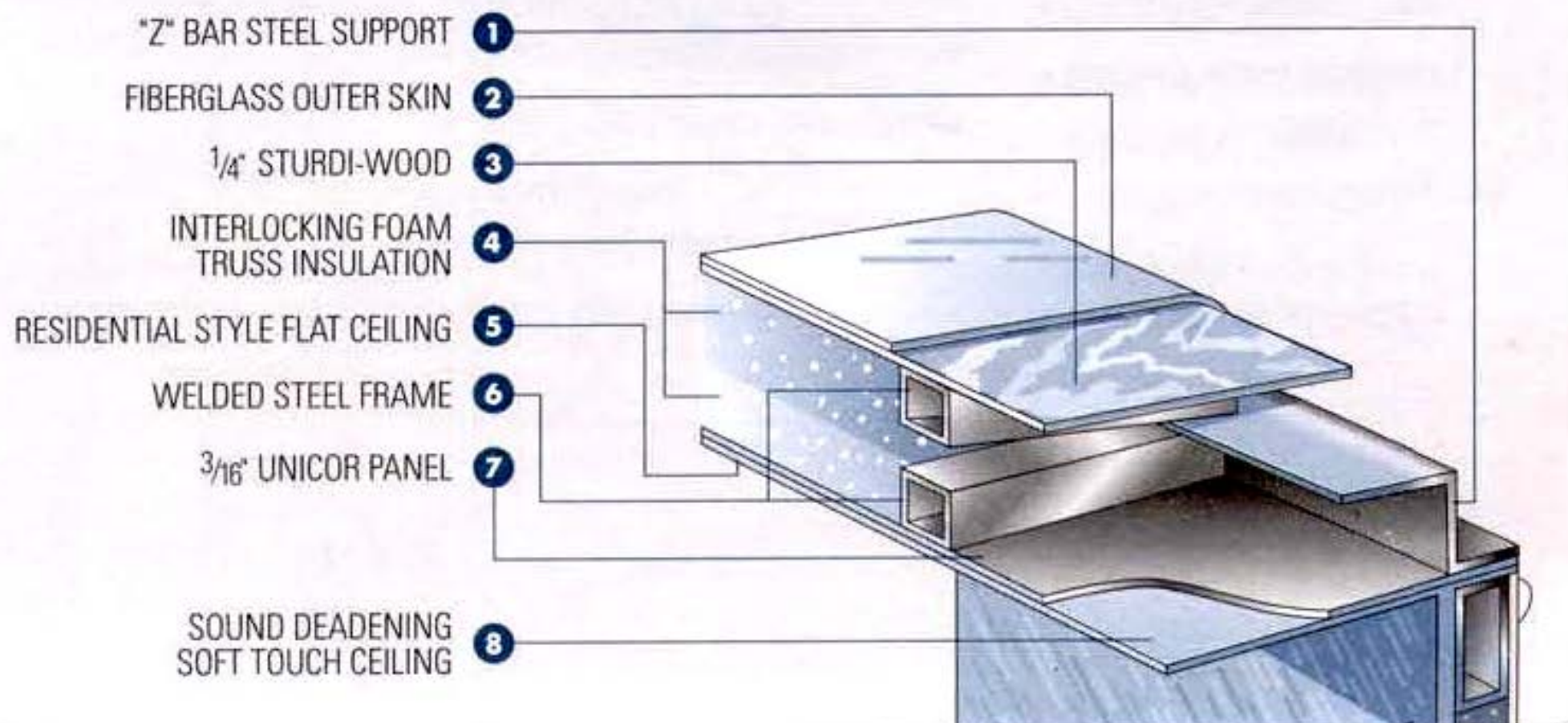


- DURAFRAME™ Steel Sub Floor Construction
- Steel Framed Laminated Floor
- Steel Framed Laminated Crowned Fiberglass Roof
- Steel Framed Laminated Fiberglass High Gloss Walls
- Front and Rear Molded Fiberglass Caps
- Full Panoramic Tinted Windshield
- Soft Fabric Ceiling Material
- Electric Slide-Out Room with Laminated Walls
- Custom Vinyl Exterior Graphics
- Insulated Fiberglass Exterior Storage Compartment Doors with Integrated Latches and Gas Struts
- Integrated Front and Rear Fiberglass Bumpers
- Aluminum Rear Ladder
- Automotive Undercoating As Required



- Praxis Oak Paneling
- Solid Wood Raised Panel Cabinet Doors
- Solid Wood Cabinet Face Frames
- Deluxe Cabinetry with Hardwood Overhead End Panels and Upgraded Hardware
- Telestruts on Overhead Storage Doors and Positive Catches on All Other Doors
- Ball Bearing Roller Drawer Guides
- Corian® Kitchen Counter Tops
- Wood Cutting Block Sink Cover
- Corian® Lavy Top in Bathroom
- Kitchen Waste Basket
- Bathroom Mirror with 1" Bevel and Frame
- Decorative Obscure Shower Glass Decal
- Towel Bars in Bathroom
- Queen Bed Head-To-Rear (60" x 76")
- Color Coordinated Bedspread, Pillows and Shams
- Radius Padded Headboard
- Corian® Nightstand Tops
- Hide-A-Bed Sleeper Sofa with Designer Pillows
- Swivel Rocker Recliner Chair
- Booth Dinette with Drawers
- Designer Ceramic Tile Floor in Kitchen and Bath
- Nylon Carpeting and Pad in Bedroom and Living Area
- Deluxe Day/Night Shades in Living Area and Bedroom
- Valances and Lambrequins in Living Area and Bedroom (Valance with Corian® Tops in Bedroom)
- Venetian Blinds in Kitchen
- Three Interior Décor Packages

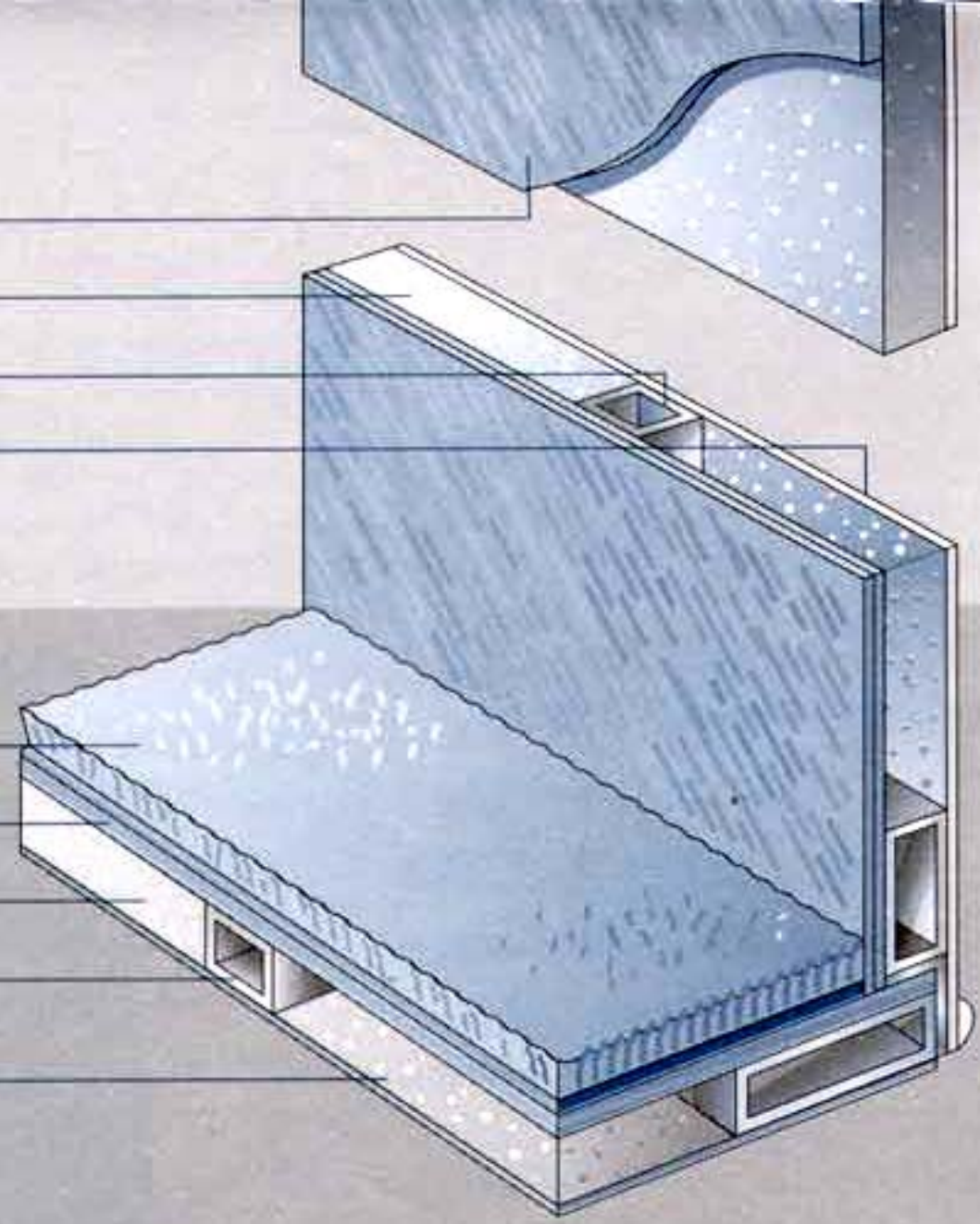
- Spartan® Summit 2000 Series Chassis
- Engine: Cummins® ISB Electronic 5.9 Liter Diesel Engine 260 HP
- Torque: 520 lbs. @ 1600 RPM
- Allison® 1000 Series 5-Speed Automatic with Overdrive and Lock Up
- Morse® T-Handle Shifter
- 100 Gallon Fuel Capacity
- 160 Amp Alternator
- Rear Axle Ratio: 4.63:1
- Full Air Suspension with Custom Tuned Gas Shock Absorbers
- TRW® TAS Internal Hydraulic Assisted Power Steering
- Stainless Steel Wheel Simulators with Valve Extensions
- Air Over Hydraulic Brakes
- Goodyear® Tires - 245/75 R 22.5 G159
- Douglas® Tilt and Telescoping Steering Column
- VIP® 18" Steering Wheel
- 5,000 lb. Hitch Receiver with Skid Bar and Six Point Connector
- Engine Intake Air Heater
- Midland® Pure Air Plus Dryer
- Farr® Air Cleaner
- Engine Mounted Fuel/Water Separator
- Remote Mounted Air Filter Restriction Indicator
- Electronic Cruise Control
- Driver Side Access to Chassis Electrical Compartment
- Chrome Exhaust Tip
- Stewart/Warner® Gauges



sidewall
floor

- VINYL CLAD OVER 1/4" MAHOGANY LUAN 9
- 2 LB. PRECISION FIT FOAM INSULATION 10
- WELDED STEEL FRAME 11
- HIGH-GLOSS "MENDE" FIBERGLASS OUTER SKIN 12

- QUALITY FLOOR COVERINGS 13
- 1/4" ACX PLYWOOD DECKING 14
- 3 LB. PRECISION FIT FOAM INSULATION 15
- WELDED STEEL FRAME CONSTRUCTION 16
- 1/8" MAHOGANY LUAN WITH TRUE GRIT BONDED UNDERSIDE SEAL 17

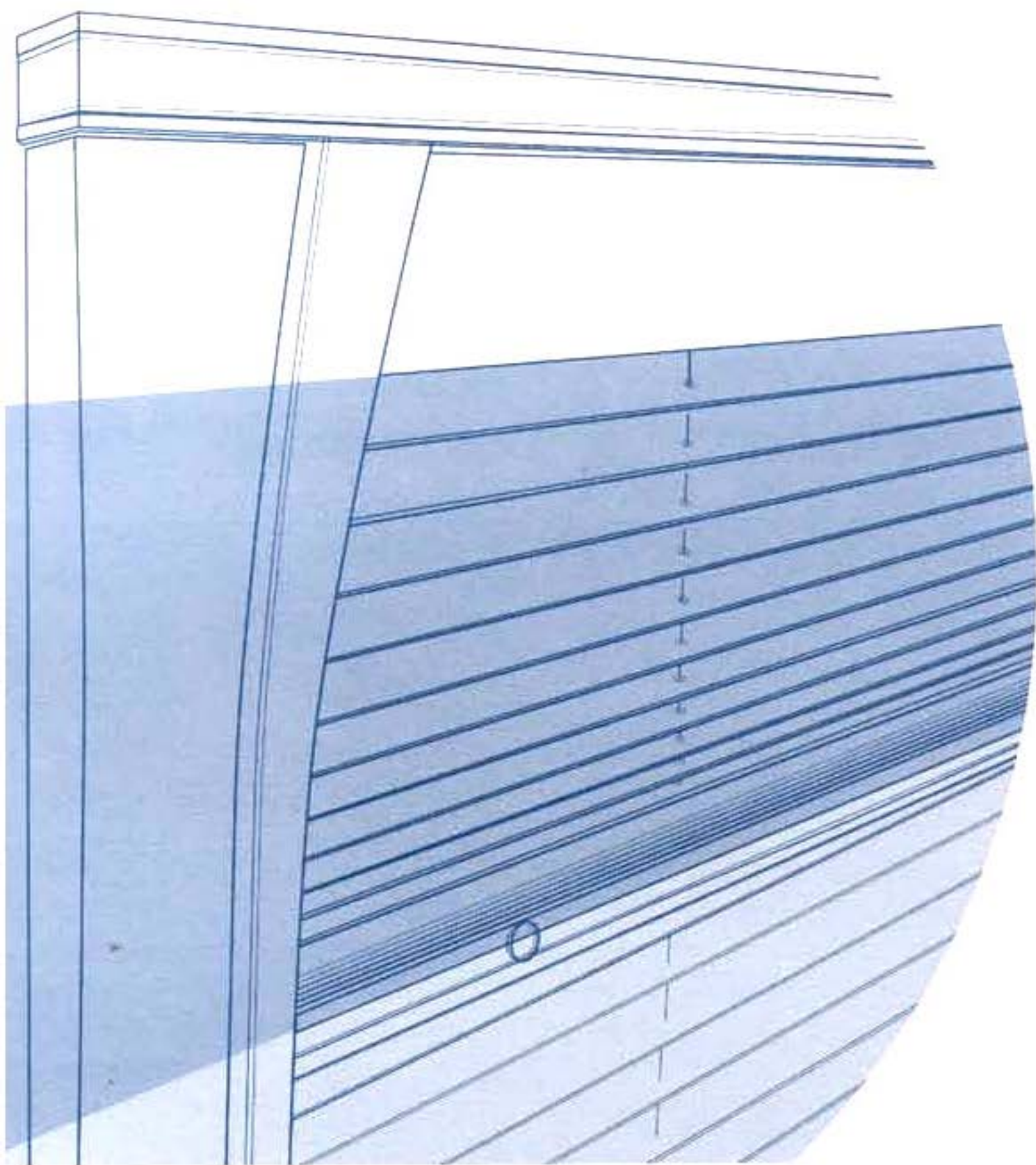


- 8 Cu. Ft. Two Way Refrigerator
- Wall Mounted Hair Dryer in Bathroom
- Dust Buster Vacuum
- High Output Three Burner Cook Top
- Bi-Fold Range Cover with Corian®

- Space Maker Convection Microwave with Touch Control and Range Hood
- Systems Monitor Panel
- TV Antenna and Booster with 12V Receptacle and TV Jack(s)
- 19" Color TV with Remote Control in Living Area

- 13" Color TV with Remote Control in Bedroom
- VCR with Video Switch Box
- Cable TV Hook-Up and Telephone Jacks
- Coffee Maker
- Bedroom Stereo Cassette Player

• Appliances and Accessories



- One 15,000 BTU Ducted Roof Low Profile Air Conditioner with Electronic Thermostat
- One 11,000 BTU Ducted Roof Air Conditioner
- 35,000 BTU Ducted Furnace
- 12V Roof Vent in Bathroom
- Skylight in Shower

• Heating, Vents and
Air Conditioning

- Radius Tinted Dual Pane Safety Glass Windows
- Slide Room Topper Awning(s)
- Main Patio Awning with Metal Cover

• Windows, Doors and Awnings

- Walnut Paneling and Décors
- Generac Quietpact 75D Diesel Generator
- 8 Ft. Refrigerator with Ice Maker
- Six Way Power Driver Seat
- Two 48" Bedroom Window Awnings
- 21" LP Gas Oven
- CD Player (10 Disc)
- Corian® Counter Top Extension
- Two 66" Slide-Out Window Awnings
- Leather Driver with Power and Passenger Seats
- Leather Faced Recliner
- Leather Faced Hide-A-Bed Sofa
- Dining Table with Two Wood and Two Folding Chairs
- Two Non Folding Wood Dining Chairs
- 12 Ft. Side-By-Side Refrigerator with Ice Maker
- Entry Door Awning
- 10 Gallon Gas/Electric Water Heater

Optional Features

- Fire Extinguisher
- LP Gas Detector, Smoke and Carbon Monoxide Detectors
- 120V GFI Protected Circuit in Kitchen, Bath and Exterior
- Deadbolt Lock on Entrance Door
- Egress Windows

Safety Features

- Driver and Passenger 3-Point Seat Belts (Lap and Shoulder)
- 3rd Brake Safety Light
- Deluxe Acrylic Exterior Grab Handle
- Extra Large Rear View Mirror with Double Convex

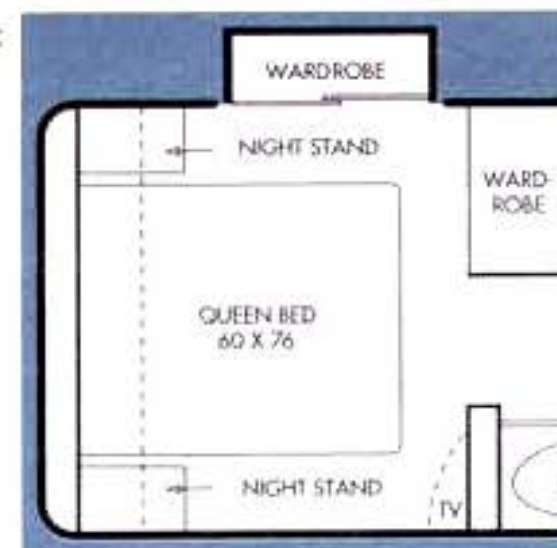
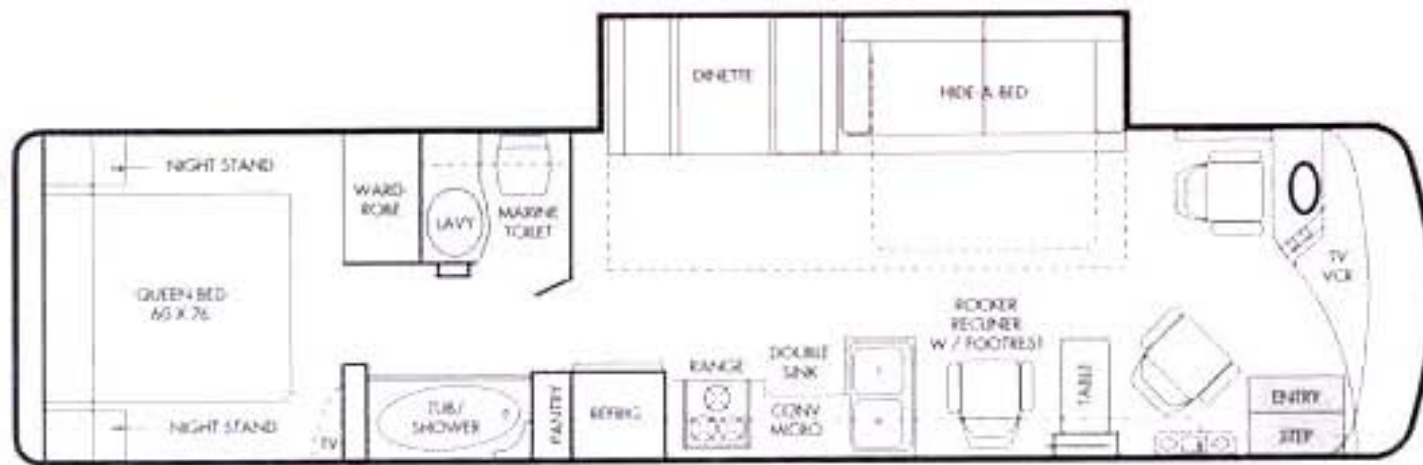
Safety Features

- Demand Water System and Water Pump
- Water Filter in Kitchen
- Six Gallon LPG Gas/Electric Water Heater with Electronic Ignition (DSI)
- Water Heater By-Pass Valve
- One-Piece Fiberglass Tub/Shower

- Two Piece Etched Glass Shower Enclosure
- Porcelain Toilet with Sprayer
- Heated Systems Compartment with Easy Access to Hook-Ups
- Decorative Kitchen and Bath Faucets
- Holding Tank Rinsing System (Black Tank Only)

Plumbing and LPG Systems

*4340



4340 with Optional Wardrobe Slide

4341



4342



Weights (lbs.)	4340*	4341	4342
Gross Vehicle Weight Rating	22,000	22,000	22,000
Gross Axle Weight Rating	26,000	26,000	26,000
Front Gross Axle Rating	8,500	8,500	8,500
Rear Gross Axle Rating	13,500	13,500	13,500
Unloaded Vehicle Weight	19,000	N/A	N/A
Maximum Carrying Capacity	3,000	N/A	N/A
Measurements			
Wheelbase	208"	208"	208"
Overall Length	34' 10"	34' 10"	34' 10"
Overall Height	11' 6"	11' 6"	11' 6"
Interior Height	79"	79"	79"
Interior Width	92.5"	92.5"	92.5"
Exterior Width	96"	96"	96"
Tank Capacities (gal.)			
Water Heater	6	6	6
Gray Tank	60	60	60
Black Tank	45	45	45
Fresh Water Tank(s)	100	100	100
LPG Tank (House Only)	23	23	23
LPG Tank (LPG Generator)	30	30	30

* Weights include Wardrobe Slide option.

* All fuel and liquid capacities are approximate and dimensions may vary. The customer has the responsibility to select the proper combinations of loads without exceeding the chassis weight capacities.



www.nrvh.com
909.943.6007

3411 North Perris Blvd. Perris, CA 92571

Due to continued product improvement, National R.V., Inc. reserves the right to change materials, colors, specifications and prices at any time without notification.

Copyright © 2000, National R.V., Inc. 7/00

For more of everything
National RV Inc. related
join us at NRVCLUB.com



National RV Club (NRVC) is not affiliated with any other club or organization.
NRVC has no relationship with the defunct National R.V. Inc. or National R.V. Holdings.
NRVC has no relationship with REV Group, REV Recreation Group, or their motor home brands.