

late 76

At last!!!  
A compact Mini-Home  
with a marine  
toilet and  
a waste holding tank.  
And that's not all-  
you can drain the sink  
water in it too.  
(or you can bypass it)

Built by  
Dolphin Camper Co.  
with the same  
high quality, excellence  
in workmanship  
and warranty that has  
made them a leader in  
the recreational  
vehicle industry for  
over 13 years.



Introducing the NEW  
**DOLPHIN TOYOTA**  
**MINI-HOME**

**In the Kitchen**

All the comforts of home . . .  
Large Stainless Steel Double Sink  
Demand Water Pump  
2½ Cu. Ft. Gas & Electric Refrigerator  
3-Burner Stove with Range Hood

**Capacities**

15 Gallon Fresh Water Tank  
15 Gallon Waste Holding Tank  
5 Gallon Propane Tank with Sight Gauge

**Sleeping**

Our Cabover is the Roomiest of the Compact Mini-Homes  
A Full 48" Wide and 74" Long  
The Daveno Seat Also Converts into a Bed 40" Wide, 72" Long

**Electrical**

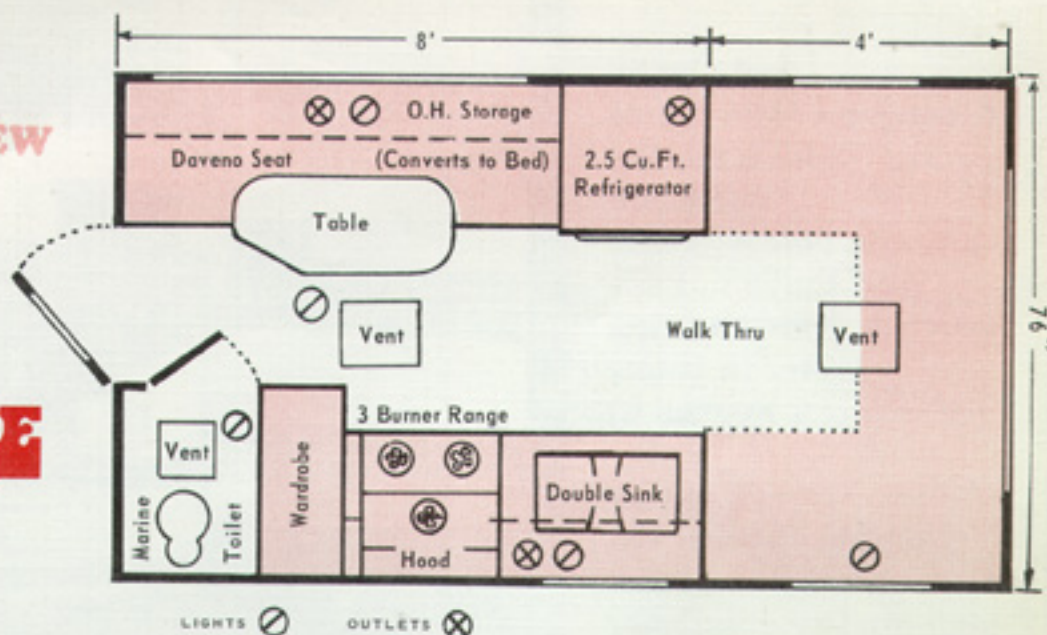
Two circuit electrical gives you the convenience of  
110 and 12 volt lighting. In addition, we  
furnish you with 110v outlets and a heavy duty 25' ext. cord.

**Comfort  
and  
Convenience**

Lots of Storage Cabinets  
Separate Wardrobe  
Two Large Drawers  
Torque-Type Tinted Windows  
Screen Door  
Three Roof Vents  
Large Walk-Thru between Cab and Motor Home

Introducing the **NEW**

# DOLPHIN TOYOTA MINI-HOME



We use the Toyota Strong Cab and Chassis with a 2189 cc engine (approx. 96 horsepower), 4-speed transmission, with a 4600 lb. G.V.W. Our completed Mini-Home has a curb weight of 3420 lbs. (with a full gas tank). This gives you a payload capacity of over 1100 lbs.

We also replace the rear tires with 10" wide L-60 tires to give you better traction and stability.

The rear shocks are replaced with a pair of Gabriel Heavy-Duty Air Shocks, so you can maintain a strong, stable ride and good looks under a loaded condition.

The finishing touch includes a Custom Paint Job and a good set of wide mirrors. Inside, we carpet the complete cab with a good quality carpet... and you're off to some of the most pleasurable and economical camping fun imaginable.

Sandwich Panel Styrofoam Insulated Floor  
Sandwich Panel Styrofoam Insulated Under Cab Floor  
1½" Fibreglass Insulation in Roof, Sidewalls and Backwall  
All Glued and Screwed Construction  
Baked Enamel Aluminum Exterior  
Exclusive Double-Sealant Process on Moldings & Windows  
Armstrong Vinyl Floor Covering

## Chassis Specifications

## Construction

## Warranty

Limited Warranty by Toyota and Appliance Manufacturers  
Lifetime Structural on Motor Home by Dolphin

9790 Glenoaks Blvd. - Sun Valley, California 91352 - Tel. (503) 768-5610 - From L.A. Call 875-0398

Due to continuous product improvements, Dolphin reserves the right to change specifications, features or prices without notice

# INTRODUCING THE 1976 DOLPHIN 22' mini-MOTOR HOME

DOLPHIN BRINGS TO THE MINI-MOTOR HOME MARKET THE SAME HIGH QUALITY, EXCELLENCE IN WORKMANSHIP AND WARRANTY THAT HAS MADE US A LEADER IN THE CAMPER INDUSTRY FOR OVER 12 YEARS.

OUR MOTOR HOMES WILL BE SOLD FACTORY DIRECT ONLY, TO GIVE YOU, THE CUSTOMER, THE BEST VALUE FOR YOUR MONEY. BACKED BY THE BEST REPUTATION FOR INTEGRITY AND SERVICE IN THE INDUSTRY.



## Specifications

Ford 11,000 GVW, 158" Wheelbase, 460 V8, Dual Rear Wheels, Dual Gas Tanks with 46 Gallon Capacity, Chateau Custom Trim Included, High Back Captains Chairs, Deluxe Interior, Chrome Bumper and Body Side Moldings, Extra Cooling, Heavy Duty Suspension, Western Mirrors, Dual Batteries, Heavy Duty Alternator, Spare Tire with Vinyl Cover, Deluxe Wheel Covers, AM/FM Stereo and 8 Track or Cassette.

## Construction

- Full Sandwich Panel Construction
- 94" Width, 34" Room in Cabover for one of the roomiest cabovers on the market (Queen Size Bed)
- Full Metal Underbelly
- Automotive Undercoating
- Insulated Wheel Wells
- Large Panoramic Radius Tinted Windows
- 4 Roof Vents including Escape Hatch
- Power Roof Vent with Fan in Bathroom
- Outside Storage Area and Generator Compartment
- 5" Foam Cushions, High Quality Fabrics
- Lots of Drawers All on Ball Bearing Steel Guides
- Bread Board and Clothes Hamper
- Wired for Roof Air Conditioning
- Porch Light and Grab Rail
- Deep Pile Carpeting and Heavy Pad



## Features

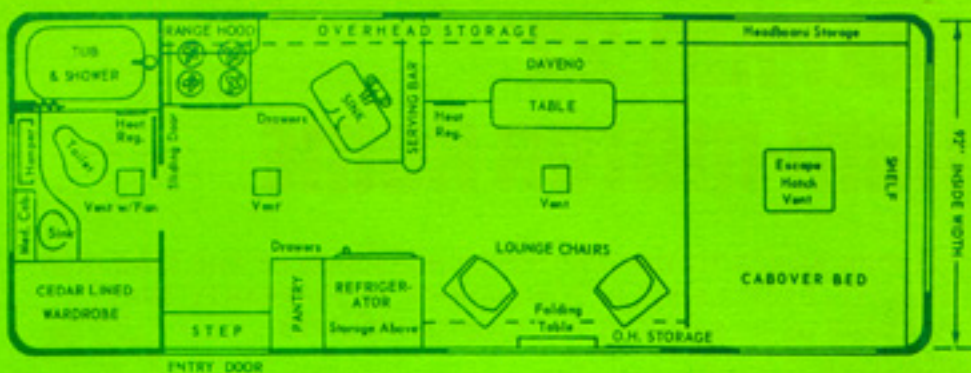
- 20,000 BTU Forced Air Heater
- 8 Gallon Hot Water Heater
- 14 Gallon Propane Tank with Gauge
- 48 Gallon Fresh Water Tank
- 8 Cu.Ft. Two Door Refrigerator
- Deluxe Fiberglass Shower w/Folding Door
- Twin Waste Holding Tanks
- 4 Burner Range with Oven, Black Glass Door
- Power Range Hood with Spice Rack Storage
- Automatic Converter and Battery Charger
- Deluxe Monitor Panel, Monitors Waste Holding Tanks, Water Tank, Propane Tank and Battery Condition
- Built-In Clock
- Thermometer and Barometer
- Built-In Drain Hose Container and Hose
- Ladder and Roof Rack

OPTIONS: AIR CONDITIONING AND GENERATOR

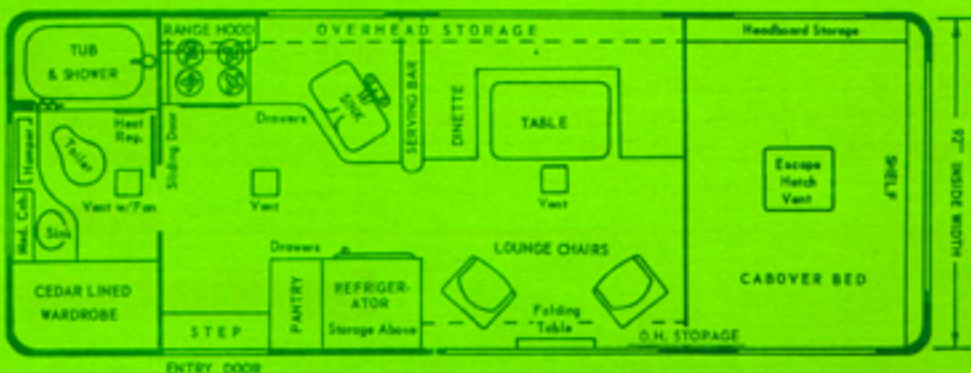
9790 Glenoaks Blvd., Sun Valley, Ca. 91352 - Phone 213-768-5610... 768-5611 - From L.A. call 875-0398

# Floor Plans

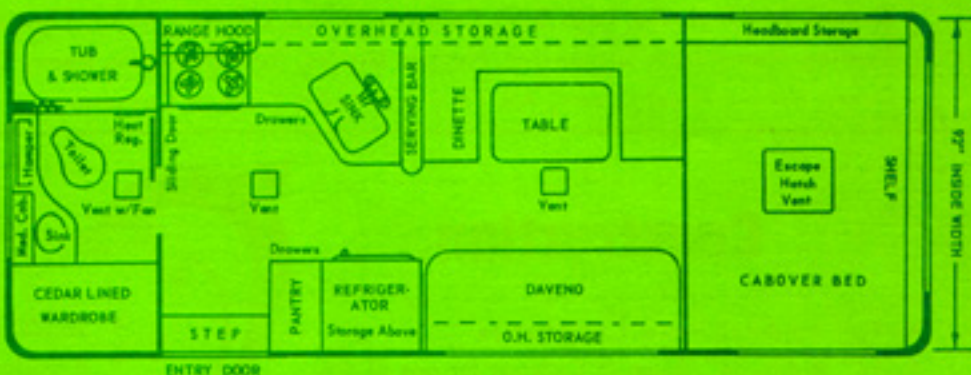
MODEL  
**A**



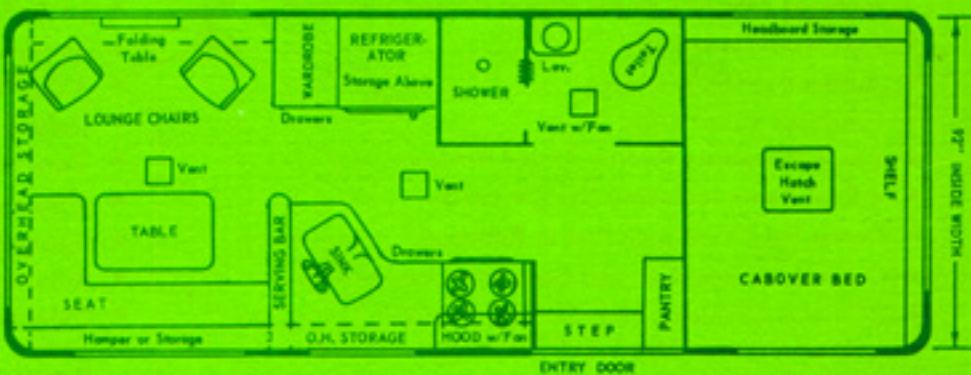
MODEL  
**B**



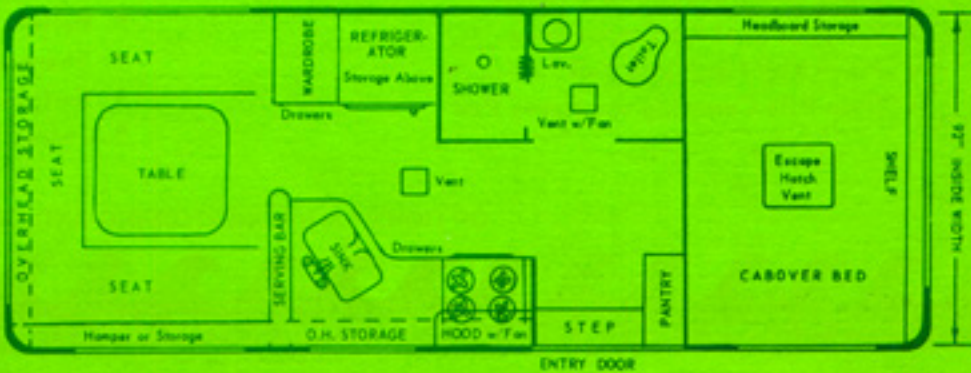
MODEL  
**C**



MODEL  
**D**



MODEL  
**E**



**THE 1976  
DOLPHIN 22'  
MINI-MOTOR HOME**

For more of everything  
National RV Inc. related  
join us at [NRVCLUB.com](http://NRVCLUB.com)



National RV Club (NRVC) is not affiliated with any other club or organization.  
NRVC has no relationship with the defunct National R.V. Inc. or National R.V. Holdings.  
NRVC has no relationship with REV Group, REV Recreation Group, or their motor home brands.