

T W O T H O U S A N D T H R E E

# Dolphin



Live the Legend.



# THE LEGACY CONTINUES

For nearly 40 years, Dolphin® has been one of the most beloved brands in recreational vehicles. A relentless drive to innovate has continually reinvented Dolphin® to suit the needs of each generation, while the guiding principles of value, comfort, quality and style have endured without compromise. That's why Dolphin® owners are among the

most loyal repeat buyers around.

The 2003's are the roomiest Dolphin's ever, with all double-slideout floorplans and clever use of space to maximize livability throughout the coach. All models feature expansive Corian®-topped

angled galleys, with a truly magnificent double-angled slide-out galley in the spacious 5356 model. Speaking of galleys, some of the most well-equipped are found in a Dolphin with its high-output cooktop, standard convection microwave oven and broad, deep cabinets.

Usable storage space is found in every nook and cranny, such as a wide storage drawer under the 74" Wonder-Bed sleeper sofa, slide-out storage bins under the dinette seats and extra large overhead cabinets. In the bedroom, an array of drawers, cabinets, wardrobes and even an under-bed storage compartment keep everything in its place. The exclusive Sandpiper Deluxe pillow-top mattress—the only such mattress available in Dolphin's class—assures a great night's rest.

Check out the 2003s and you'll see why Dolphin is one of the most enduring—and *endearing*—recreational vehicle brands on the market.

CLICK ON  
[www.nationalrv.com](http://www.nationalrv.com)  
FOR MORE INFORMATION

TWO  
THOUSAND  
3



▲ DOLP 5355 COCKPIT AREA IN FLEUR BOUQUET GARDEN



▲ DOLP 5355 WONDER BED IN FLEUR BOUQUET GARDEN



▲ DOLP 5342 WONDER BED FOLDED OUT IN PACIFIC BLUE



▲ DOLP 5342 GALLEY IN PACIFIC BLUE



▲ DOLP 5355 BOOTH DINETTE IN FLEUR BOUQUET GARDEN

# ADD YOUR OWN TOUCH

Personalize your Dolphin with your choice of three rich interior decors. Complement the decor with your choice of genuine hardwood cabinetry.



CLICK ON [www.nationalrv.com](http://www.nationalrv.com) FOR MORE INFORMATION

▲ DOLP 5342 LIVING AREA IN PACIFIC BLUE

## RICH INTERIOR FABRICS

▼ FLEUR BOUQUET GARDEN



▼ PACIFIC BLUE



▼ SANDALWOOD BEACH



▲ DOLP 5342 BEDROOM IN PACIFIC BLUE



▲ DOLP 5355 BEDROOM IN FLEUR BOUQUET GARDEN



**NATIONAL RV**™

CLICK ON [www.nationalrv.com](http://www.nationalrv.com) FOR MORE INFORMATION

## CHOOSE YOUR COLOR:



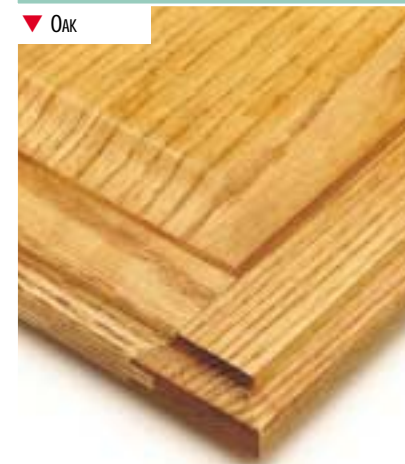
▲ DOLPHIN IN CABERNET



▲ DOLPHIN IN TEAL

## GENUINE HARDWOOD CABINERY

▼ OAK

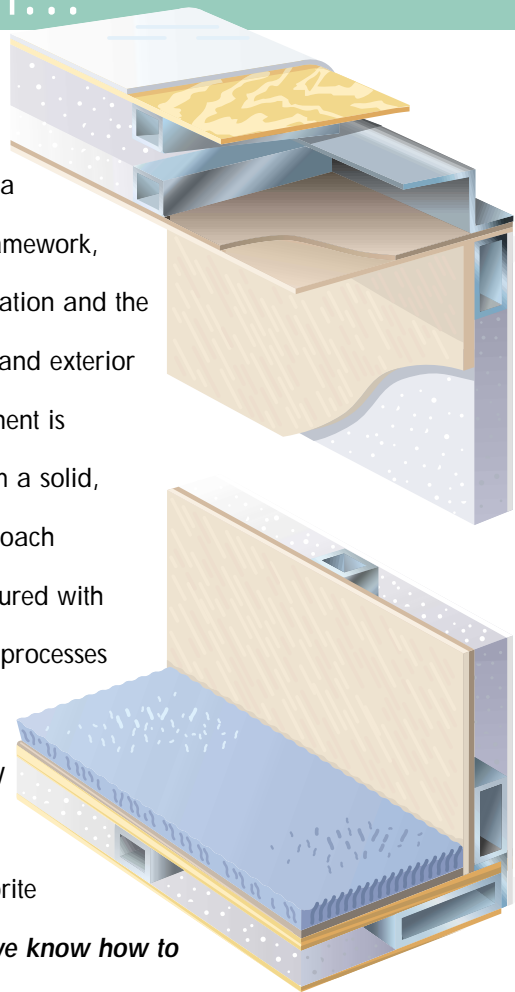


▼ MAPLE



# BEST BUILT...

The entire coach body—floor, sidewalls, roof—is constructed of a rugged tubular steel framework, high density foam insulation and the highest quality interior and exterior surfaces. Each component is vacuum-bonded to form a solid, rigid structure. Every coach component is manufactured with adherence to the latest processes and the strictest quality standards. After nearly 40 years of building some of America's favorite recreational vehicles, **we know how to do it right!**



# ...BEST BACKED.

Peace of Mind is standard equipment with all National RV motorhomes. Our **3-years/ unlimited miles warranty** against structural defects to the coach body and subfloor structure leads the industry. Our professional



Owner Services staff, National RV's extensive dealer network as well as factory service centers on both coasts stand ready to assist with any warranty issues.

And we back you on the road against any unforeseen problems with full-featured Coach Net® emergency roadside assistance, service scheduling assistance and a host of extra travel benefits, free to you for your first year of owning your new National RV motorhome.

## Coach Net.

# THE TWIN PILARS OF ULTIMATE COACH STRENGTH...



The 2003, Dolphin® is built exclusively on the awesome Workhorse® W-22 chassis. The W-22 is truly the most innovative gasoline motorhome platform to come along in years as it brings diesel coach features to gasoline motorhomes—and Dolphin® was the first motorhome designed specifically for it! An impressive 22,000 lb. GVWR provides plenty of cargo

and towing capacity. Higher frame rails yield a diesel-height beltline, with increased basement storage space underneath. Large 22.5"

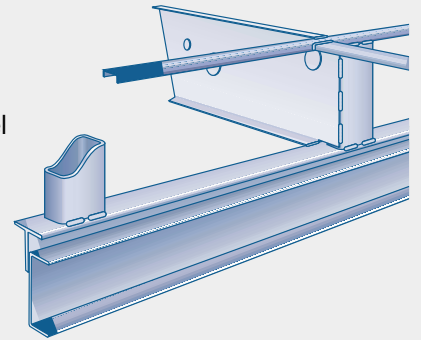
wheels and wide track suspension give the coach the impressive stance of a diesel motorhome. The engine is mounted lower in the frame to provide a lower center of gravity, optimal driveline angles and an extremely low profile engine cover in the cockpit. At 340 horsepower, the GM Vortec 8100 engine is the most powerful available in a gasoline motorhome. The smooth, electronic shift 5-speed Allison automatic is the same heavy duty transmission found in many high-end diesel motorhomes. Test drive a Dolphin on the W-22, and discover the next generation of gasoline performance.

**NATIONAL R.V., INC.**  
3411 N. Perris Boulevard  
Perris, California 92571  
(909) 943-6007 - Fax (909) 943-8498  
[www.nationalrv.com](http://www.nationalrv.com)

© 2002 National R.V., Inc. Due to continuing product improvements, colors, specifications and equipment are subject to change without notice.



Every National RV gasoline motorhome is built with patented Duraframe® technology. This patented all-steel truss-frame design imparts brute strength to the chassis to help it resist the forces of traveling, thereby relieving stresses from the sidewalls and other coach body components. This results in less squeaks and rattles and longer lasting structural integrity.



Duraframe® also makes the large, diesel-style pass-through basement storage bays possible. Duraframe® and Uni-Cage®, our all welded steel coach body construction, combine their strengths into one of the most durable motorhomes on the road.

CLICK ON [www.nationalrv.com](http://www.nationalrv.com) FOR MORE INFORMATION



YOUR AUTHORIZED DOLPHIN DEALER IS:

ACTUAL CHASSIS NOT SHOWN

# Dolphin

## Fabrics:



Fleur Bouquet Garden



Pacific Blue



Sandalwood Beach

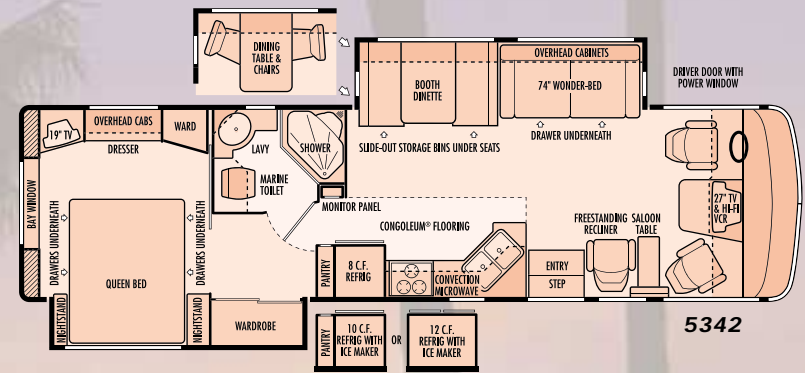
## Woods:



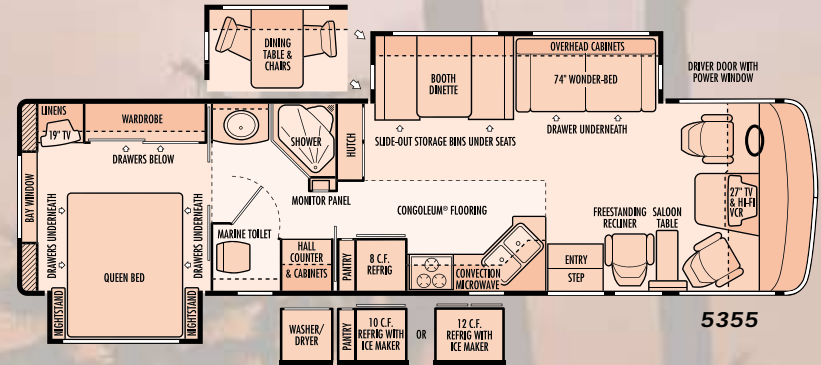
Oak



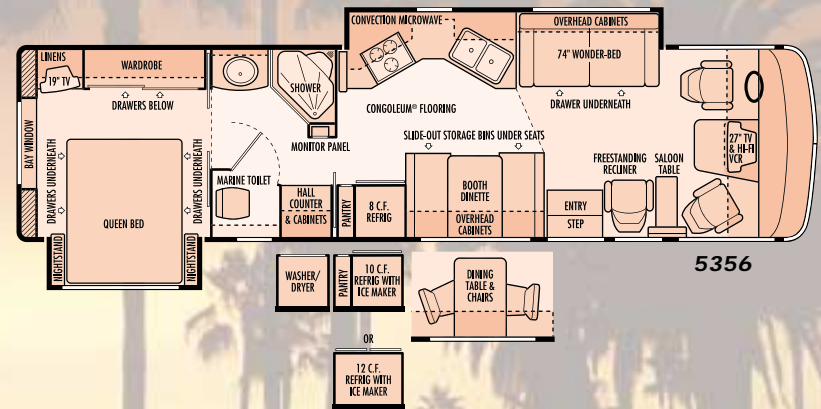
Maple



5342



5355



5356

## Exterior Graphics:



Cabernet



Teal

Due to continued product improvement, National R. V., Inc. reserves the right to change materials, colors, specifications and prices at any time without notification. Copyright © 2002 by National R. V., Inc. 03/02



# DOLPHIN FEATURES & SPECIFICATIONS

CHASSIS SPECIFICATIONS	WORKHORSE
<b>Chassis</b>	W-22 (22,000 GVWR)
Tires	Michelin XRV 235/80 R22.5G
Wheels	22.5X7, 8-Lug Steel, SS Liner
Brakes	Hydro-Boost, 4-Wheel Disc ABS
Drive Axle Gear Ratio	5.38:1
Alternator	130 Amp
Chassis Batteries	(1) 690 CCA
Shock Absorbers	Tuned Monroe
Fuel Tank Capacity	75 Gallons
Hitch Capacity	5,000 lbs. Class III
Chassis Warranty	3 years/36,000 miles
<b>Engine</b>	GM® Vortec® 8100
Displacement	8.1 Liters (496 cu. in.)
Peak Horsepower	340 HP @4,200 RPM
Peak Torque	455 ft. lbs. @ 3,200 RPM
Engine Warranty	3 years/36,000 miles
<b>Transmission</b>	Allison® 1000 Series
Transmission Type	5-Speed Automatic Overdrive
Transmission Warranty	3 years/Unlimited miles

## BODY CONSTRUCTION

Duraframe® patented steel sub floor construction  
 Steel framed laminated floor  
 Steel framed crowned laminated fiberglass roof  
 Steel framed laminated fiberglass high gloss walls  
 Front and rear molded fiberglass caps  
 Fiberglass front and rear molded bumpers  
 Full panoramic tinted windshield  
 Soft fabric ceiling material  
 Electric slide-out room with overhead cabinets (flush floor on lounge slide models only)  
 Insulated fiberglass exterior storage compartment doors with integrated paddle latches and gas struts  
 Steel framed exterior storage compartment with insulated bottoms  
 Lighted storage compartments and service area  
 Exterior assist handle  
 Aluminum rear ladder  
 Awning rail/rain gutter with drip spouts  
 Automotive undercoating as required  
 Steel insulated front bulkhead  
 Custom vinyl exterior graphics with choice of two colors

## COCKPIT FEATURES

JVC® AM/FM stereo and CD with four speakers  
 Driver and passenger gooseneck reading lights  
 Custom dash in gray matte diamond brush finish with full gauge package  
 Convenience tray  
 Audible turn signals  
 Pantographic windshield wipers  
 Power steering

High output three burner cook top with flush mount Corian® range cover  
 GE® SpaceSaver convection microwave oven  
 GE® SpaceSaver convection microwave oven  
 Systems monitor panel  
 Cable TV hook-up and multiple telephone jacks  
 TV antenna  
 RCA® 27" TV with front A/V jacks in cockpit  
 RCA® Hi-Fi VCR in cockpit  
 RCA® 19" TV with front A/V jacks in bedroom  
 Video control box with antenna booster

## FURNITURE

Kustom Fit® fabric 6-way power driver recliner seat with swivel base  
 Kustom Fit® fabric passenger recliner seat with swivel base  
 Kustom Fit® 74" Wonder-Bed® fabric sleeper sofa with slide-in armrests and drawer underneath  
 Freestanding Kustom Fit® fabric swivel recliner chair with footrest

## INTERIORS

### Throughout Coach

Oak paneling and doors  
 Telestrut hardware on overhead doors and positive catches on others  
 Drawers with ball bearing roller guide design

### Cockpit Area

Floormats

### Living Area

Booth dinette with slide-out storage drawers  
 Deluxe nylon carpet and pad

Cruise control  
 Tilt steering wheel  
 Rear vision system with built-in microphone  
 Overhead dash fans (2 speed)  
 Power heated rear view mirrors with double convex  
 Passenger work station with 12V/120V receptacle in console  
 Aviation style sun visors  
 Hydraulic leveling jacks with dash mounted controls  
 Generator hour meter and auxiliary start switch on dash  
 Wraparound privacy curtain with easy reach wand  
 CB radio ready

## APPLIANCES & ACCESSORIES

Multi-speaker TV sound  
 8 cu. ft. double door refrigerator

Day/night shades with designer valances  
 Hutch and overhead with beveled mirror (5355)  
 Solid raised panel cabinet doors

## Kitchen Area

Slide-out pantry (not available with side-by-side refrigerator option)  
 Angled Corian® kitchen countertop with Corian® flush mount stove cover  
 Porcelain sink with wood cutting block sink cover  
 Wastebasket  
 One piece designer Congoleum® vinyl floor  
 Venetian mini-blind with valance  
 Molded ABS silverware organizer

## Bath Area

One piece designer Congoleum® vinyl floor  
 Decorative shower glass etching  
 Flat panel doors  
 Laminate lavy top with woodgrain edge  
 Medicine cabinet  
 Towel bars  
 Residential doorknob for toilet room door  
 Dresser cabinet with four drawers (washer/dryer prep) (5355 and 5356)

## Bedroom Area

Deluxe nylon carpet and pad  
 Venetian mini-blinds with valances  
 Solid flat panel cabinet doors  
 Cedar lining in wardrobe  
 Sliding mirrored wardrobe doors with "Dolphin design" etching  
 Color coordinated bedspread, pillows and shams  
 Radius padded headboard  
 Wall dresser with drawers and laundry hamper (5342)  
 Slide-out queen bed with four pull out drawers and storage compartment  
 "Sandpiper Deluxe" residential-style pillow top mattress  
 Laminate top nightstands with woodgrain edge  
 Residential style closet rods

## ELECTRICAL SYSTEMS & LIGHTS

50 Amp MagneTek® power converter and charger  
 50 Amp 120V distribution panel and cord  
 Onan® Marquis Gold™ 5.5 kW generator  
 400 watt inverter  
 Two 6V deep cycle house batteries  
 Battery disconnect switch for house batteries  
 Porch light with interior switch  
 110V patio receptacle  
 Recessed fluorescent lights in ceiling  
 Designer lights in living and bedroom areas  
 Cosmetic light in bathroom  
 Two water pump switches (kitchen and bath)  
 10 Watt solar panel (mounted on roof)

GFI protected electrical circuit  
 Courtesy light at entry-door switch panel

## PLUMBING & LPG SYSTEMS

### Coach Exterior

Heated systems compartment with easy access to hook-ups  
 Variable rate water pump  
 Holding tank rinse system (black tank only)  
 Manual dump valves  
 Winterization antifreeze inlet to pump  
 Outside shower  
 Water heater by-pass valve  
 Pressurized water fill with integrated regulator  
 10 gallon gas/electric water heater

### Kitchen Area

Water filter  
 Delta® single lever chrome faucet with side sprayer

### Bath Area

One-piece fiberglass angled shower with seat  
 Residential single lever pressure balancing shower faucet with fixed head  
 Porcelain toilet with sprayer  
 Single lever brass faucet with crystal handle

## SAFETY FEATURES

Extra large rear view mirrors with double convex  
 Driver and passenger three point lap and shoulder seatbelts  
 Deadbolt lock on entry door  
 Fire extinguisher  
 Smoke, carbon monoxide (CO) and LPG detectors  
 Egress window

## WINDOWS, DOORS & AWNINGS

Radius tinted safety glass windows (sliding windows in living area and jalousie windows in kitchen and bedroom)  
 Bedroom rear picture window  
 Radius entrance door with clear glass, shade and screen door  
 Power double entrance step with light and anti-skid  
 Ventilated windows on sides of slide-out rooms (lounge slides only)  
 Slide-out rooms topper awnings\*  
 Private toilet room window (5355 & 5356)  
 Tinted skylight in bathroom

## VENTILATION

Dual 13,500 BTU Duo-Therm® low profile Penguin® air conditioners with in-ceiling ducting  
 35,000 BTU electronic ignition furnace  
 Ducted heating system

12V Fan-Tastic® Vent with wall thermostat and rain sensor in galley/living area  
 12V roof exhaust fan in bathroom  
 Dash automotive heating and A/C system with defroster

## OPTIONAL FEATURES

### Coach Exterior

Chrome electric horns  
 Dual pane windows  
 Manual patio awning with metal cover\*  
 Manual living room and bedroom window awning package\*  
 Dual 13,500 BTU Duo-Therm® low profile Penguin® air conditioners with heat pumps, two-speed fans and in-ceiling ducting

### Throughout Coach

Maple paneling and doors

### Cockpit Area

Oversized steering wheel with power steering  
 Driver door with power window  
 Pioneer® AM/FM stereo with CD player, XM receiver and remote control  
 RCA® DVD player  
 JVC® multi-disc CD changer (for use with JVC® receiver)  
 Pioneer® multi-disc CD changer (for use with Pioneer® receiver)  
 Kingdome® automatic stationary satellite dish

## Furniture

Kustom Fit® leather 6-way power driver recliner seat with swivel base and Kustom Fit® leather passenger recliner seat with swivel base  
 Kustom Fit® leather 6-way power driver recliner seat with swivel base and Kustom Fit® leather extra-wide passenger recliner seat with swivel base  
 Kustom Fit® 74" Wonder-Bed® leather sleeper sofa with slide-in armrests and drawer underneath  
 Freestanding Kustom Fit® leather swivel recliner chair with footrest

## Living Area

Freestanding dinette table with four low-back wooden chairs

## Kitchen Area

10 cu. ft. double door refrigerator with icemaker (with pantry)  
 12 cu. ft. side-by-side refrigerator with icemaker (delete pantry)  
 21" high output three-burner range with oven (surface mounted)  
 Corian® countertop extension (5342 and 5355)

## Bathroom Area

Combination washer/dryer (5355 and 5356)

## Bedroom Area

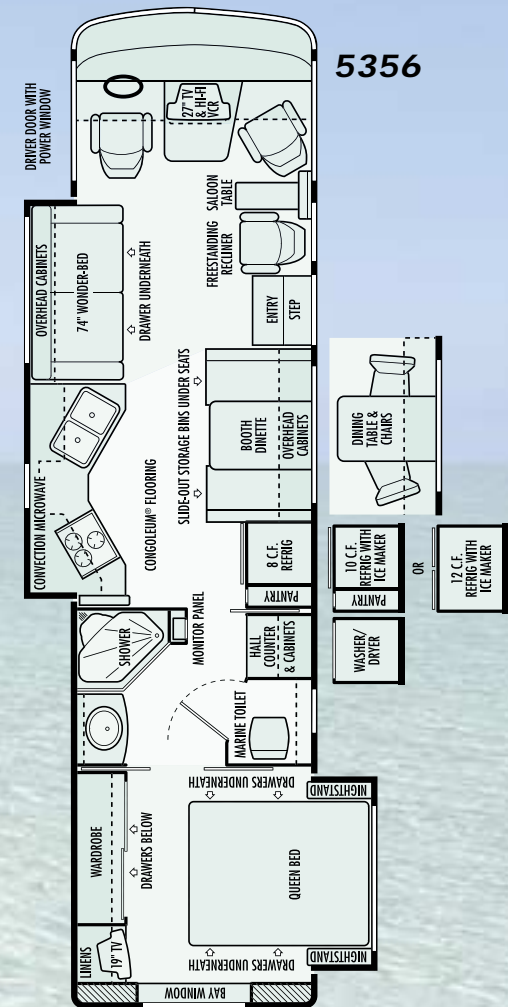
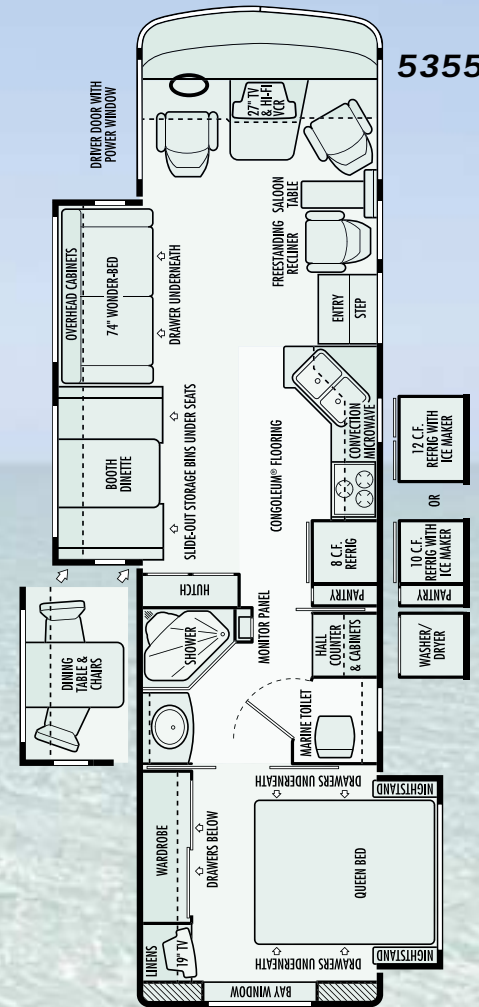
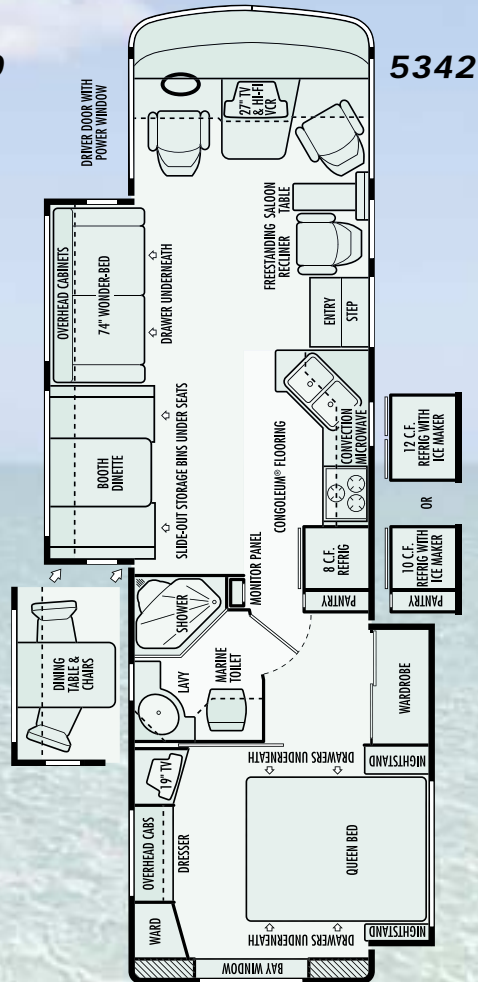
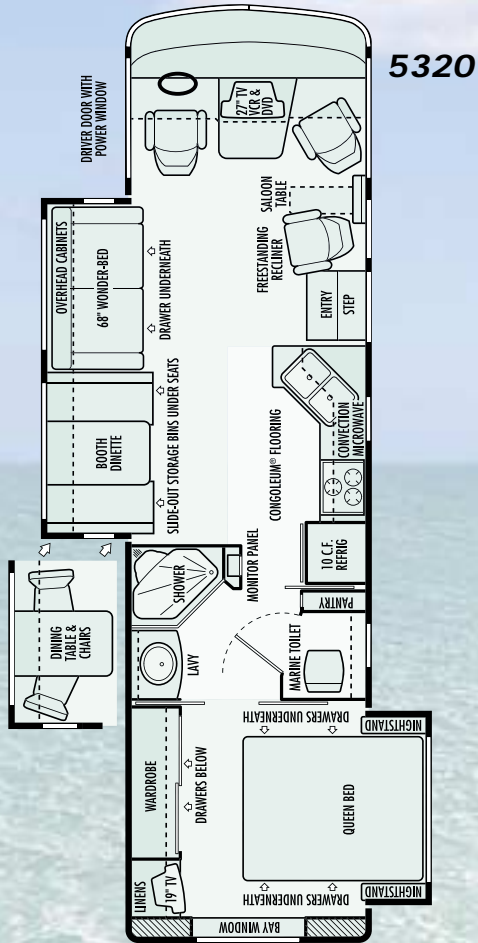
Pleated day/night shades

WEIGHTS	5342	5355	5356
<b>Workhorse Chassis</b>			
Gross Vehicle Weight Rating	22,000 lbs.	22,000 lbs.	22,000 lbs.
Gross Combined Weight Rating	26,000 lbs.	26,000 lbs.	26,000 lbs.
Front Gross Axle Weight Rating	8,000 lbs.	8,000 lbs.	8,000 lbs.
Rear Gross Axle Weight Rating	14,500 lbs.	14,500 lbs.	14,500 lbs.
Unloaded Vehicle Weight	17,980 lbs.	18,320 lbs.	18,170 lbs.
Maximum Carrying Capacity	4,020 lbs.	3,680 lbs.	3,830 lbs.
Cargo Carrying Capacity (CCC)	2,487 lbs.	2,147 lbs.	2,297 lbs.
<b>MEASUREMENTS</b>	<b>5342</b>	<b>5355</b>	<b>5356</b>
Wheelbase	228"	228"	228"
Overall Length	34' 9"	36' 0"	36' 0"
Exterior Height (Workhorse Chassis)	12' 4"	12' 4"	12' 4"
Exterior Height (with Satellite)	12' 10"	12' 10"	12' 10"
Interior Height	79 1/2"	79 1/2"	79 1/2"
Interior Width	98 1/2"	98 1/2"	98 1/2"
Exterior Width	102"	102"	102"
<b>TANK CAPACITIES</b>	<b>5342</b>	<b>5355</b>	<b>5356</b>
Water Heater	10 gal.	10 gal.	10 gal.
Gray Tank	60 gal.	60 gal.	60 gal.
Black Tank	50 gal.	50 gal.	50 gal.
Fresh Water Tank(s)	90 gal.	90 gal.	90 gal.
LP-Gas Tank (Volume W.C.)	24.2 gal.	24.2 gal.	24.2 gal.

\*Not available on CSA units

Due to continued product improvement, National R. V., Inc. reserves the right to change materials, colors, specifications and prices at any time without notification. Copyright © 2002 by National R. V., Inc. 03/02

# Dolphin



Due to continued product improvement, National R. V., Inc. reserves the right to change materials, colors, specifications and prices at any time without notification. Copyright © 2002 by National R. V., Inc. 07/02

# DOLPHIN FEATURES & SPECIFICATIONS

CHASSIS SPECIFICATIONS	WORKHORSE
<b>Chassis</b>	W-22 (22,000 GVWR)
Tires	Michelin® XRV 235/80 R22.5G
Wheels	22.5X7, 8-Lug Steel, SS Liner
Brakes	Hydro-Boost, 4-Wheel Disc ABS
Drive Axle Gear Ratio	5.38:1
Alternator	130 Amp
Chassis Batteries	(1) 690 CCA
Shock Absorbers	Tuned Monroe®
Fuel Tank Capacity	75 Gallons
Hitch Capacity	5,000 lbs. Class III
Chassis Warranty	3 years/36,000 miles
<b>Engine</b>	GM® Vortec® 8100
Displacement	8.1 Liters (496 cu. in.)
Peak Horsepower	340 HP @4,200 RPM
Peak Torque	455 ft./lbs. @ 3,200 RPM
Engine Warranty	3 years/36,000 miles
<b>Transmission</b>	Allison® 1000 Series
Transmission Type	5-Speed Automatic Overdrive
Transmission Warranty	3 years/Unlimited miles

## BODY CONSTRUCTION

Duraframe® patented steel sub floor construction  
 Steel framed laminated floor  
 Steel framed crowned laminated fiberglass roof  
 Steel framed laminated fiberglass high gloss walls  
 Front and rear molded fiberglass caps  
 Fiberglass front and rear molded bumpers  
 Full panoramic tinted windshield  
 Soft fabric ceiling material  
 Electric slide-out room with overhead cabinets (flush floor on lounge slide models only)  
 Insulated fiberglass exterior storage compartment doors with integrated paddle latches and gas struts  
 Steel framed exterior storage compartment with insulated bottoms  
 Lighted storage compartments and service area  
 Exterior assist handle  
 Aluminum rear ladder  
 Awning rail/rain gutter with drip spouts  
 Automotive undercoating as required  
 Steel insulated front bulkhead  
 Custom vinyl exterior graphics with choice of two colors

## COCKPIT FEATURES

JVC® AM/FM stereo and CD with four speakers  
 Driver and passenger gooseneck reading lights  
 Custom dash in gray matte diamond brush finish with full gauge package  
 Convenience tray  
 Audible turn signals  
 Pantographic windshield wipers  
 Power steering

Cruise control  
 Tilt steering wheel  
 Rear vision system with built-in microphone  
 Overhead dash fans (2 speed)  
 Power heated rear view mirrors with double convex  
 Passenger work station with 12V/120V receptacle in console  
 Aviation style sun visors  
 Hydraulic leveling jacks with dash mounted controls  
 Generator hour meter and auxiliary start switch on dash  
 Wraparound privacy curtain with easy reach wand  
 CB radio ready

## APPLIANCES & ACCESSORIES

Multi-speaker TV sound  
 8 cu. ft. double door refrigerator  
 High output three burner cook top with flush mount Corian® range cover  
 GE® SpaceSaver convection microwave oven with carousel, built-in light and fan  
 Systems monitor panel  
 Cable TV hook-up and multiple telephone jacks  
 TV antenna  
 RCA® 27" TV with front A/V jacks in cockpit  
 RCA® Hi-Fi VCR in cockpit  
 RCA® 19" TV with front A/V jacks in bedroom  
 Video control box with antenna booster

## FURNITURE

Kustom Fit® fabric 6-way power driver recliner seat with swivel base  
 Kustom Fit® fabric passenger recliner seat with swivel base  
 Kustom Fit® 74" Wonder-Bed® fabric sleeper sofa with slide-in armrests and drawer underneath (68" for 5320)  
 Freestanding Kustom Fit® fabric swivel recliner chair with footrest

## INTERIORS

### Throughout Coach

Oak paneling and doors  
 Telestrut hardware on overhead doors and positive catches on others  
 Drawers with ball bearing roller guide design

### Cockpit Area

Floormats

### Living Area

Booth dinette with slide-out storage drawers  
 Deluxe nylon carpet and pad

Day/night shades with designer valances  
 Hutch and overhead with beveled mirror (5355)  
 Solid raised panel cabinet doors

## Kitchen Area

Slide-out pantry (not available with side-by-side refrigerator option)  
 Angled Corian® kitchen countertop with Corian® flush mount stove cover  
 Porcelain sink with wood cutting block  
 sink cover  
 Wastebasket  
 One piece designer Congoleum® vinyl floor  
 Venetian mini-blind with valance  
 Molded ABS silverware organizer

## Bath Area

One piece designer Congoleum® vinyl floor  
 Decorative shower glass etching  
 Flat panel doors  
 Laminate lavy top with woodgrain edge  
 Medicine cabinet  
 Towel bars  
 Residential doorknob for toilet room door  
 Dresser cabinet with four drawers (washer/dryer prep) (5355 and 5356)

## Bedroom Area

Deluxe nylon carpet and pad  
 Venetian mini-blinds with valances  
 Solid flat panel cabinet doors  
 Cedar lining in wardrobe  
 Sliding mirrored wardrobe doors with "Dolphin design" etching  
 Color coordinated bedspread, pillows and shams  
 Radius padded headboard  
 Wall dresser with drawers and laundry hamper (5342)  
 Slide-out queen bed with four pull out drawers and storage compartment  
 "Sandpiper Deluxe" residential-style pillow top mattress  
 Laminate top nightstands with woodgrain edge  
 Residential style closet rods

## ELECTRICAL SYSTEMS & LIGHTS

50 Amp MagneTek® power converter and charger  
 50 Amp 120V distribution panel and cord  
 Onan® Marquis Gold™ 5.5 kW generator  
 400 watt inverter  
 Two 6V deep cycle house batteries  
 Battery disconnect switch for house batteries  
 Porch light with interior switch  
 110V patio receptacle  
 Recessed fluorescent lights in ceiling  
 Designer lights in living and bedroom areas  
 Cosmetic light in bathroom  
 Two water pump switches (kitchen and bath)

10 Watt solar panel (mounted on roof)  
 GFI protected electrical circuit  
 Courtesy light at entry-door switch panel

## PLUMBING & LPG SYSTEMS

### Coach Exterior

Heated systems compartment with easy access to hook-ups  
 Variable rate water pump  
 Holding tank rinse system (black tank only)  
 Manual dump valves  
 Winterization antifreeze inlet to pump  
 Outside shower  
 Water heater by-pass valve  
 Pressurized water fill with integrated regulator  
 10 gallon gas/electric water heater

### Kitchen Area

Water filter  
 Delta® single lever chrome faucet with side sprayer

### Bath Area

One-piece fiberglass angled shower with seat  
 Residential single lever pressure balancing shower faucet with fixed head  
 Porcelain toilet with sprayer  
 Single lever brass faucet with crystal handle

## SAFETY FEATURES

Extra large rear view mirrors with double convex  
 Driver and passenger three point lap and shoulder seatbelts  
 Deadbolt lock on entry door  
 Fire extinguisher  
 Smoke, carbon monoxide (CO) and LPG detectors  
 Egress window

## WINDOWS, DOORS & AWNINGS

Radius tinted safety glass windows (sliding windows in living area and jalousie windows in kitchen and bedroom)  
 Bedroom rear picture window  
 Radius entrance door with clear glass, shade and screen door  
 Power double entrance step with light and anti-skid  
 Ventilated windows on sides of slide-out rooms (lounge slides only)  
 Slide-out rooms topper awnings\*  
 Private toilet room window (5320, 5355 & 5356)  
 Tinted skylight in bathroom

## VENTILATION

Dual 13,500 BTU Duo-Therm® low profile Penguin® air conditioners with in-ceiling ducting  
 35,000 BTU electronic ignition furnace

Ducted heating system  
 12V Fan-Tastic® Vent with wall thermostat and rain sensor in galley/living area  
 12V roof exhaust fan in bathroom  
 Dash automotive heating and A/C system with defroster

## OPTIONAL FEATURES

### Coach Exterior

Chrome electric horns  
 Dual pane windows  
 Manual patio awning with metal cover\*  
 Manual living room and bedroom window awning package\*  
 Dual 13,500 BTU Duo-Therm® low profile Penguin® air conditioners with heat pumps, two-speed fans and in-ceiling ducting

### Throughout Coach

Maple paneling and doors

### Cockpit Area

Oversized steering wheel with power steering  
 Driver door with power window  
 Pioneer® AM/FM stereo with CD player, XM receiver and remote control  
 RCA® DVD player  
 JVC® multi-disc CD changer (for use with JVC® receiver)  
 Pioneer® multi-disc CD changer (for use with Pioneer® receiver)  
 Kingdome® automatic stationary satellite dish

## Furniture

Kustom Fit® leather 6-way power driver recliner seat with swivel base and Kustom Fit® leather passenger recliner seat with swivel base  
 Kustom Fit® leather 6-way power driver recliner seat with swivel base and Kustom Fit® leather extra-wide passenger recliner seat with swivel base  
 Kustom Fit® 74" Wonder-Bed® leather sleeper sofa with slide-in armrests and drawer underneath  
 Freestanding Kustom Fit® leather swivel recliner chair with footrest

## Living Area

Freestanding dinette table with four low-back wooden chairs

## Kitchen Area

10 cu. ft. double door refrigerator with icemaker (with pantry)  
 12 cu. ft. side-by-side refrigerator with icemaker (delete pantry)  
 21" high output three-burner range with oven (surface mounted)  
 Corian® countertop extension (5342 and 5355)

## Bathroom Area

Combination washer/dryer (5355 and 5356)

## Bedroom Area

Pleated day/night shades

WEIGHTS	5320	5342	5355	5356
<b>Workhorse Chassis</b>				
Gross Vehicle Weight Rating	22,000 lbs.	22,000 lbs.	22,000 lbs.	22,000 lbs.
Gross Combined Weight Rating	26,000 lbs.	26,000 lbs.	26,000 lbs.	26,000 lbs.
Front Gross Axle Weight Rating	8,000 lbs.	8,000 lbs.	8,000 lbs.	8,000 lbs.
Rear Gross Axle Weight Rating	14,500 lbs.	14,500 lbs.	14,500 lbs.	14,500 lbs.
Unloaded Vehicle Weight	18,110 lbs.	17,980 lbs.	18,960 lbs.	18,810 lbs.
Maximum Carrying Capacity	3,890 lbs.	4,020 lbs.	3,040 lbs.	3,190 lbs.
Cargo Carrying Capacity (CCC)	2,548 lbs.	2,487 lbs.	1,507 lbs.	1,657 lbs.
<b>MEASUREMENTS</b>				
Wheelbase	208"	228"	228"	228"
Overall Length	33' 9"	34' 9"	36' 0"	36' 0"
Exterior Height (Workhorse Chassis)	12'	12'	12'	12'
Exterior Height (with Satellite)	12' 6"	12' 6"	12' 6"	12' 6"
Interior Height	79 1/2"	79 1/2"	79 1/2"	79 1/2"
Interior Width	98 1/2"	98 1/2"	98 1/2"	98 1/2"
Exterior Width	102"	102"	102"	102"
<b>TANK CAPACITIES</b>				
Water Heater	10 gal.	10 gal.	10 gal.	10 gal.
Gray Tank	50 gal.	60 gal.	60 gal.	60 gal.
Black Tank	40 gal.	50 gal.	50 gal.	50 gal.
Fresh Water Tank(s)	67 gal.	90 gal.	90 gal.	90 gal.
LP-Gas Tank (Volume W.C.)	24.2 gal.	24.2 gal.	24.2 gal.	24.2 gal.

\*Not available on CSA units

Due to continued product improvement. National R. V., Inc. reserves the right to change materials, colors, specifications and prices at any time without notification. Copyright © 2002 by National R. V., Inc. 07/02



For more of everything  
National RV Inc. related  
join us at [NRVCLUB.com](http://NRVCLUB.com)



National RV Club (NRVC) is not affiliated with any other club or organization.  
NRVC has no relationship with the defunct National R.V. Inc. or National R.V. Holdings.  
NRVC has no relationship with REV Group, REV Recreation Group, or their motor home brands.