

# Sea Breeze

T W O   T H O U S A N D   O N E



**NRV**  
NATIONAL R.V., INC.

Specifications • Floorplans

---

*The 2001 Sea Breeze class “A” motor home is a world apart from the “Sea of Sameness” that motor home buyers are faced with today. Sea Breeze has become a favorite for those enthusiasts who believe that a motor home shouldn’t drive like one. And the best handling class “A” available has only improved over the years. Sea Breeze now stands alone as the only high storage, low profile, luxury class “A” coach available. Once you drive one, you’ll have to own one.*

---

## Standard Features

### PAGE

- 2 Body Construction**
- 2 Electrical System & Lights**
- 3 Interiors**
- 3 Cockpit Features**
- 4 Chassis, Engine and Suspension**
- 5 Appliances and Accessories**
- 5 Windows, Doors and Awnings**
- 6 Heating, Vents and Air Conditioning**
- 6 Safety Features**
- 6 Plumbing and LPG Systems**
- 7 Optional Features**
- 7 Floorplans**
- 9 Measurements**

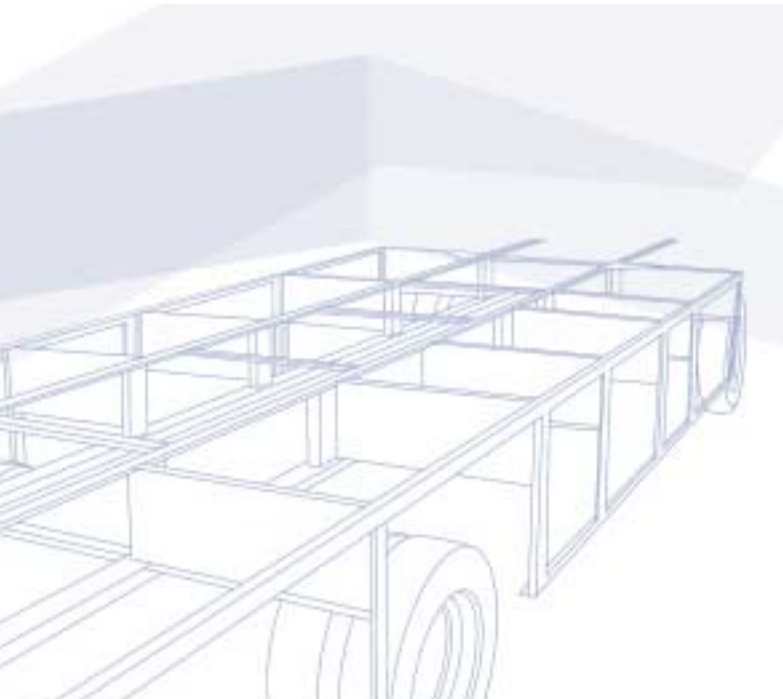
*Sea Breeze*

- DURAFRAME<sup>™</sup> Steel Sub Floor Construction
- Steel Framed Laminated Floor
- Steel Framed Crowned Laminated Fiberglass Roof
- Steel Framed Laminated Fiberglass High Gloss Walls
- Front and Rear Molded Fiberglass Caps with Spare Tire in Rear Cap
- Full Panoramic Tinted Windshield
- Soft Fabric Ceiling Material
- Electric Slide-Out Room with Overhead Cabinets (1340)
- Integrated Driving Lights in Front Bumper
- Integrated Front and Rear Bumpers
- Insulated Fiberglass Exterior Storage Compartment Doors with Integrated Latches and Gas Struts
- Steel Framed Exterior Storage Compartments with Insulated Bottoms
- Lighted Storage Compartments and Service Area
- Exterior Passenger Grab Handle
- Aluminum Rear Ladder
- Automotive Undercoating As Required
- Custom Vinyl Exterior Graphics
- Rear Gas Fill
- Fiberglass Stepwell and Battery Storage Compartment
- Heated Holding Tanks

• Body Construction

- 50 AMP 120V Distribution Panel and Cord
- Two 6 Volt Deep Cycle House Batteries
- House Battery Disconnect Switch
- Porch Light
- Patio Receptacle
- Entry Step Light
- Water Pump Switches
- Decorative Dining Light
- Cosmetic Light In Bathroom
- Incandescent Lights in Living Area
- Light in Service Area
- 5.5 KW Generic Generator

• Electrical System & Lights





- Praxis Oak Paneling and Doors
- Solid Oak Raised Panel Cabinet Doors in Living Area
- Flat Panel Doors in Bath and Bedroom Area
- Solid Oak Drawer Fronts
- Telestrut Hardware on Overhead Doors and Positive Catches on Others
- Ball Bearing Roller Drawer Guides
- Slide-Out Pantry (1300, 1320 and 1340)
- Corian<sup>®</sup> Kitchen Countertop
- Sink Cover (Wood Cutting Block)
- Porcelain Sink with Single Lever Faucet
- Kitchen Waste Basket
- Laminate Bathroom Lavy Top
- Full Length Beveled Glass Mirror
- Medicine Cabinet
- Towel Bars in Bathroom
- Head to Rear Queen Bed with Laminate Night Stands and Shirt Closets
- One Piece Designer Vinyl Floor in Kitchen and Bath
- Color Coordinated Bedspread, Pillows and Shams
- Radius Padded Headboard
- Fold Down Wonderbed Sofa (1300, 1320 and 1331)
- Hide-A-Bed Sofa (1340)
- Deluxe Rocker Recliner with Swivel Base (1331 and 1340)
- Booth Dinette with Slide-Out Storage Drawers
- Deluxe Nylon Carpet and Pad in Living Area and Bedroom
- Day/Night Shades with Designer Valances in Living Area
- Venetian Blinds and Valances in Kitchen and Bedroom

- AM/FM Cassette Stereo with Four Speakers
- Driver and Passenger Map Light (Dome Light)
- Custom Dash with Full Gauge Package
- Oak Drink/Cup Tray
- Audible Turn Signals
- Pantographic Windshield Wipers
- Power Steering
- Cruise Control
- Tilt Steering Wheel
- Electric Automotive Horn
- Rear Vision System with Rear Microphone Built-In
- Overhead Dash Fans (Two Speed)
- Rosen Aviation Style Sun Visors
- Power Remote Heated Mirrors
- Driver and Passenger Recliner Seats
- 12V / 120V Receptacle and Telephone Jack in Console
- Passenger Work Station
- 4-Point Hydraulic Leveling Jacks with Dash Mid Control Pad (1340)
- Generator Hour Meter and Control Switch on Dash
- 12V Outlet on Dash (Cigar Lighter)
- Auxiliary Start Switch on Dash

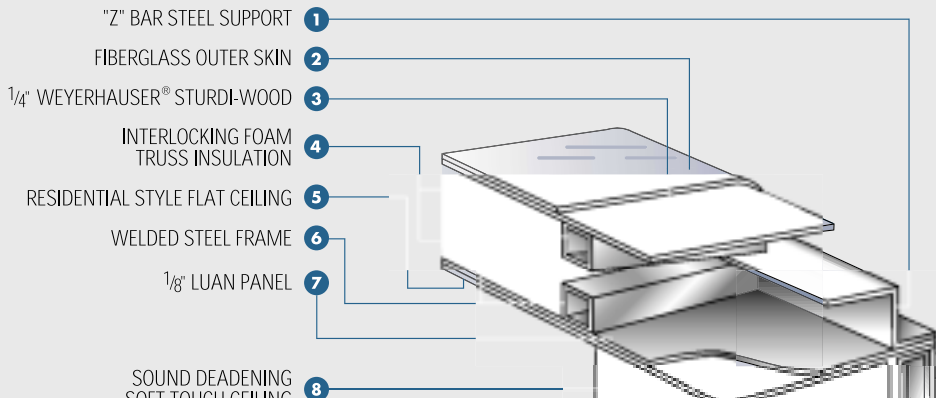
### Ford 1300, 1320, 1331 and 1340

- Four Wheel Anti-Lock Disc Brakes
- Electronic Fuel Injection Gasoline Engine—310 HP Triton 6.8L V10
- 415 Cubic Inch Displacement
- 4-Speed Automatic Transmission with Overdrive (4R100)
- 75 Gallon Fuel Tank Capacity
- 115 Amp Alternator
- Rear Axle Ratio—5.38:1
- Front Leaf Spring Suspension—7,000 lb.
- Rear Leaf Spring Suspension—13,500 lb. (11,000 lb. on 1300 and 1320)
- Stainless Steel Wheel Liners with Valve Extension
- Tire and Wheel Size 245/70R x 19.5F
- Radial Spare Tire and Wheel
- Class III 5,000 lb. Hitch Receiver and Electrical Connector

### Workhorse 1300 and 1320

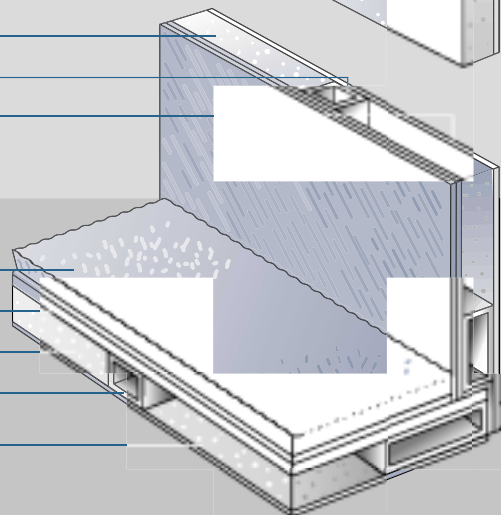
- Four Wheel Anti-Lock Disc Brakes
- Vortec Electronic Fuel Injected Engine (7.4L V8)
- 454 Cubic Inch Displacement (290 HP)
- 4 Speed Automatic Transmission with Overdrive
- 75 Gallon Fuel Tank Capacity
- 124 Amp Alternator
- Rear Axle Ratio - 4.63:1
- Front Coil Suspension - 6,000 lb.
- Rear Leaf Spring Suspension - 12,000 lb.
- Stainless Steel Wheel Liners with Valve Extension
- Tire and Wheel Size LT225/70R - 19.5F
- Radial Spare Tire and Wheel
- Class III 5,000 lb. Hitch Receiver and Electrical Connector

### • Chassis, Engine and Suspension



- VINYL CLAD OVER 1/4" MAHOGANY LUAN 9
- 2 LB. PRECISION FIT FOAM INSULATION 10
- WELDED STEEL FRAME 11
- HIGH-GLOSS "MENDE" FIBERGLASS OUTER SKIN 12

- QUALITY FLOOR COVERINGS 13
- 1/4" ACX PLYWOOD DECKING 14
- 3 LB. PRECISION FIT FOAM INSULATION 15
- WELDED STEEL FRAME CONSTRUCTION 16
- 1/8" MAHOGANY LUAN WITH VINYL TRUE GRIT BONDED UNDERSIDE SEAL 17



- 8 Cu. Ft. Double Door Refrigerator
- Coffee Maker
- High Output Three Burner Cook Top with Flush Mount Corian® Range Cover

- Space Saver Convection Microwave Oven with Built-In Light and Fan
- Systems Monitor Panel
- Cable TV Hook-Up and Telephone Jack

- TV Antenna and Booster
- Video Control Box
- 19" Color TV with Remote Control in Living Area

• Appliances and Accessories

- Radius Tinted Safety Glass Windows (Sliding Windows in Living Area and Jalousie Windows in Kitchen and Bedroom)

- Radius Entrance Door with Clear Glass, Shade and Screen Door
- Power Entrance Double Step with Light

- Tinted Skylight in Bathroom
- Slide-Out Room Awning (1340)

• Windows, Doors and Awnings

- Thermostatically Controlled Dual 13.5M BTU Ducted Roof A/Cs
- 35,000 BTU Electronic Ignition Furnace
- Fan-Tastic Vent with Wall Thermostat and Rain Sensor

- 12V Exhaust Fan in Bathroom
- Dash Automotive Heating and A/C System with Defroster
- Ducted Heating System

• Heating, Vents and Air Conditioning

- Fire Extinguisher
- LPG Detector
- Smoke Detector
- Carbon Monoxide Detector
- Deadbolt Lock on Entry Door
- Driver and Passenger Three-Point Seat Belts (Lap and Shoulder)

- Egress Window(s)
- Extra Large Side View Mirrors with Double Convex
- Exterior Grab Handle
- 120 Volt GFI Protected Circuit in Kitchen, Bath and Exterior

• Safety Features

- Demand Water System and Water Pump
- 6-Gal. LPG Water Heater with Electronic Ignition (DSI)
- Water Heater By-Pass Valve
- Pressurized Water Fill
- One-Piece Fiberglass Tub/Shower
- Glass Shower Door and Enclosure
- Porcelain Toilet with Sprayer

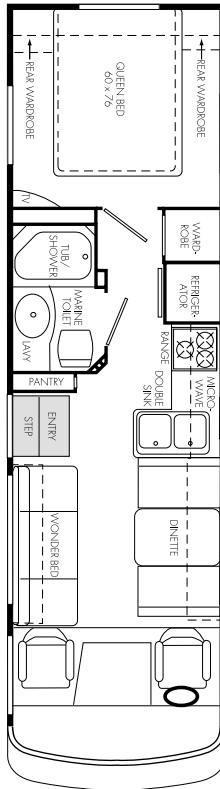
- Heated Systems Compartment with Easy Access to Hook-Ups
- Decorative Kitchen and Bath Faucets
- Holding Tank Rinse System (Black Tank Only)
- Outside Shower in Service Area
- Winterization Antifreeze Inlet to Pump
- Heated Water and Holding Tanks

• Plumbing and LPG Systems

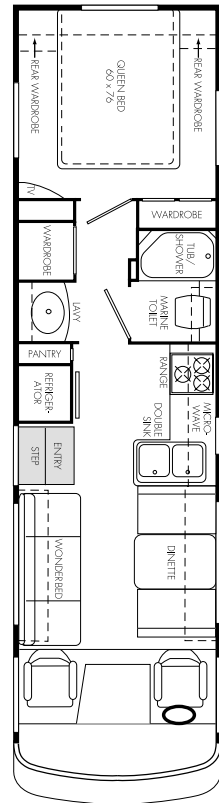
- 13" Color TV with Remote (Bedroom)
- 8 Cu. Ft. Refrigerator with Ice maker
- 6-Way Power Driver's Seat
- VCR with Remote
- Shower Privacy Decal
- 400 Watt Inverter
- Patio Awning
- Two 48" Bedroom Window Awnings
- 21" LPG Gas Oven
- CD Player (10 Disc)
- 11 Ft. Slide-Out Window Awning
- Six Gal. Gas/Electric Water Heater
- Corian® Countertop Extension
- Dual Pane Windows
- 4-Point Hydraulic Jacks (1300, 1320 and 1331)

#### Optional Features

**1300**

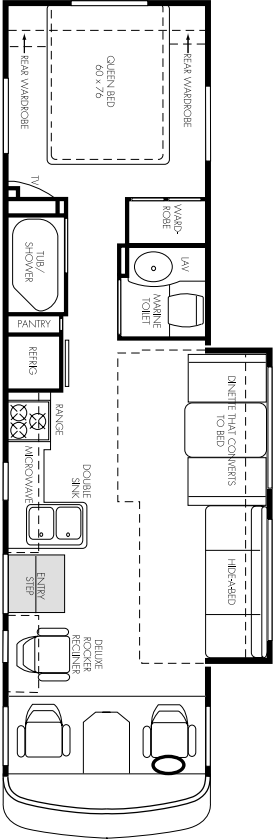


**1320**

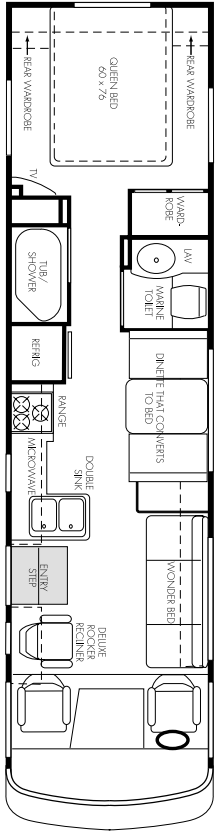


#### • Floorplans

1340



1331



**Weights (lbs.) – Ford**

	<b>1300</b>	<b>1320</b>	<b>1331</b>	<b>1340</b>
Gross Vehicle Rating	18,000	18,000	20,500	20,500
Gross Combined Rating	23,000	23,000	25,500	25,500
Front Gross Axle Rating	7,000	7,000	7,000	7,000
Rear Gross Axle Rating	11,000	11,000	13,500	13,500
Unloaded Vehicle Weight	N/A	14,200	N/A	N/A
Maximum Carrying Capacity	N/A	2,850	N/A	N/A

**Weights (lbs.) – Workhorse**

Gross Vehicle Rating	18,000	18,000	N/A	N/A
Gross Combined Rating	21,000	21,000	N/A	N/A
Front Gross Axle Rating	6,000	6,000	N/A	N/A
Rear Gross Axle Rating	12,000	12,000	N/A	N/A
Unloaded Vehicle Weight	13,570	N/A	N/A	N/A
Maximum Carrying Capacity	4,430	N/A	N/A	N/A

**Measurements**

Wheelbase	190"	208"	228"	228"
Overall Length	30' 5"	32' 5"	33' 8"	34' 1"
Overall Height (Ford incl. A/C)	N/A	11' 3"	11' 3"	11' 3"
Overall Height (Workhorse incl. A/C)	11' 2"	11' 2"	N/A	N/A
Interior Height	77 1/2"	77 1/2"	77 1/2"	77 1/2"
Interior Width	92 1/2"	92 1/2"	92 1/2"	92 1/2"
Exterior Width	96"	96"	96"	96"

**Tank Capacities (gal.)**

Water Heater	6	6	6	6
Gray Tank	23	30	30	30
Gray Tank #2 (Forward)	18	N/A	18	18
Black Tank	49	40	40	40
Fresh Water Tank(s)	70	70	70	70
LPG Tank	19	19	19	19

\*All fuel and liquid capacities are approximate and dimensions may vary. The customer has the responsibility to select the proper combinations of loads without exceeding the chassis weight capacities.



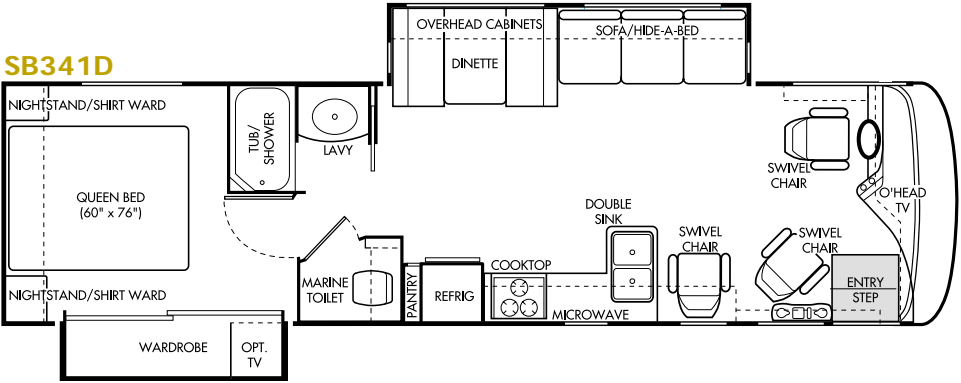
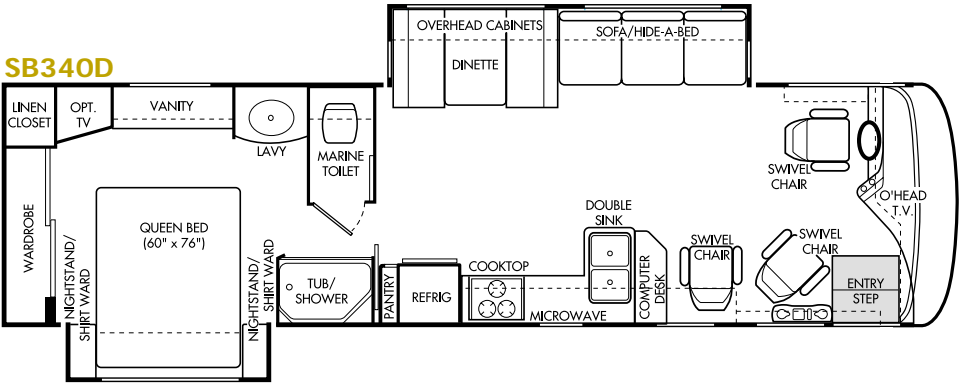
**www.nrvh.com**  
**909.943.6007**

3411 North Perris Blvd. Perris, CA 92571

Due to continued product improvement, National R.V., Inc.  
reserves the right to change materials, colors, specifica-  
tions and prices at any time without notification.

Copyright © 2000, National R.V., Inc. 9/00





Due to continued product improvement, National R.V., Inc. reserves the right to change materials, colors, specifications and prices at any time without notification.

Copyright © 2000, National R.V., Inc. 11/00

WEIGHTS (lbs.)	SB340D	SB341D
Gross Vehicle Wt Rtg	22,000	22,000
Gross Combined Wt Rtg	26,000	26,000
Front Gross Axle Wt Rtg	8,500	8,500
Rear Gross Axle Wt Rtg	13,500	13,500
Unloaded Vehicle Wt	19,310	TBD
Maximum Carrying Cap	2,690	TBD

MEASUREMENTS	SB340D	SB341D
Wheelbase	208"	208"
Overall Length	34' 10"	34' 10"
Overall Height (road)	11' 6"	11' 6"
Interior Height	79 ½"	79 ½"
Interior Width	98 ½"	98 ½"
Exterior Width	102"	102"

TANK CAPACITY (gal.)	SB340D	SB341D
Water Heater	6	6
Grey Tank	60	60
Black Tank	45	45
Fresh Water Tank(s)	100	100
LPG Tank (Volume)	69	69

About National RV

National RV is recognized as a premier manufacturer of recreational vehicles with a reputation for offering innovative, quality products that feature a rich supply of value-added features at a reasonable price. We are committed to offering the best in product selection, customer service and dealer support.

We are dedicated to continually strengthen relationships with our customers and dealers. At National RV, your satisfaction comes first; we listen and value input from each of our customers and dealers.

Our employees are dedicated to providing the best possible service and producing the highest quality recreational vehicles to provide each customer with a lifetime of fond memories.



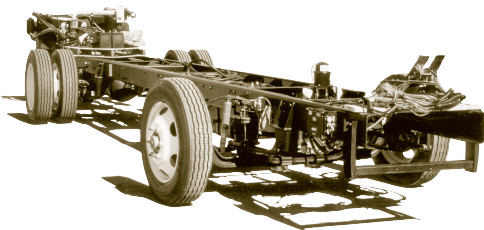
3411 North Perris Boulevard  
Perris, California 92571

[www.nrvh.com](http://www.nrvh.com)

SEA BREEZE BUS  
BY NATIONAL RV



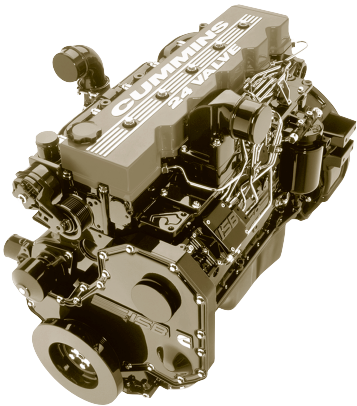
1.



**SPARTAN SUMMIT 2000 CHASSIS**  
Spartan, a recognized industry leader, has been incorporating sturdiness & safety into each chassis for over 10 years. This heavy duty steel chassis is also equipped with numerous electronic safety features.

2.

**CUMMINS ISB DIESEL ENGINE**  
The spectacular ISB is the most recent, up-to-date, fully electronic, 24-valve diesel engine!



3.

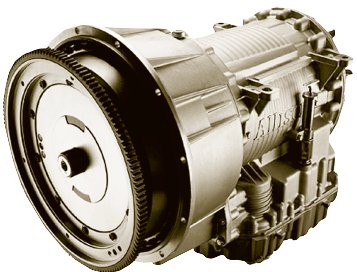


Spartan Chassis Rail  
Full Air Ride Suspension  
Westport 8,500 lb. Axle (Front)  
Eaton 13,500 lb. Axle (Rear)

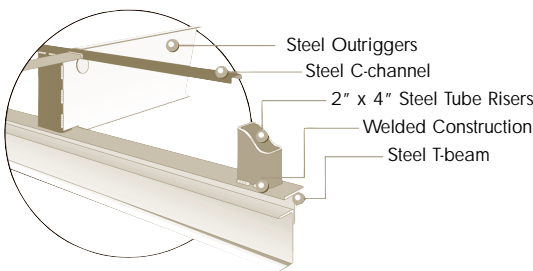
**FULL AIR SUSPENSION**  
Full air suspension is far better than springs! Not only do they provide a smoother ride, they deliver better handling and a superior GVWR!

4.

**ALLISON TRANSMISSION**  
The Allison Transmission is a medium duty, automatic 5-speed transmission T-1000 and is highly rated in the RV industry!



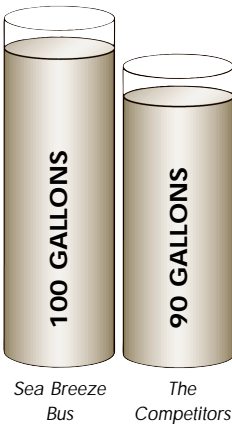
5.



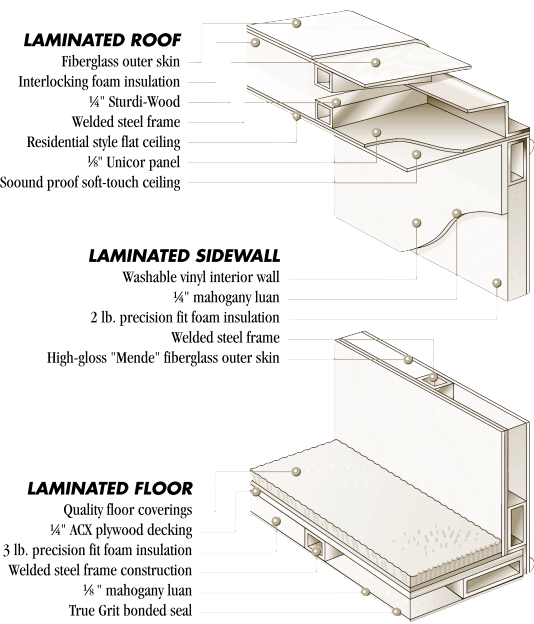
**DURAFRAME®**  
Patented for its unique, sturdy construction, the Duraframe® modular sub floor system dramatically increases the strength of the chassis!

6.

**100 GALLONS FUEL CAPACITY**  
The Sea Breeze Bus features the largest fuel capacity in its class. You'll only get 90 gallons with everyone else!



7.



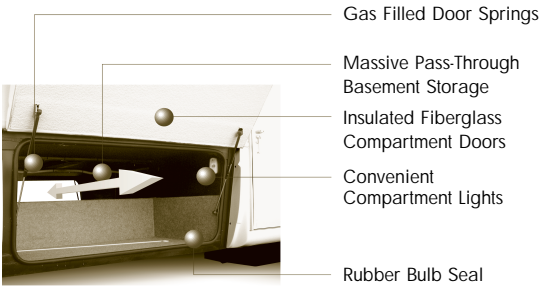
**LAMINATED SIDEWALLS, FLOOR AND ROOF**  
Built for your comfort, these laminated walls are high pressure vacuum bonded, high density B-Foam insulation, with a steel frame to provide excellent insulation!

8.

**CENTRAL SYSTEMS CONTROLS**  
This centrally located control module offers ultimate user convenience! You won't need to go looking for any switch on this Bus. They are all in one place!



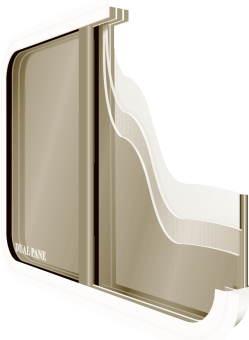
9.



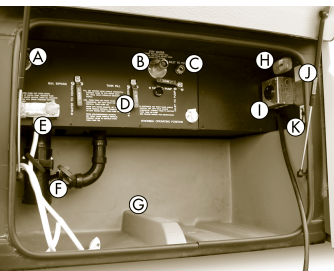
**INSULATED BASEMENT COMPARTMENTS**  
The basement compartments are built to protect all your storage with four-seasons capability. And we've given you all the room you could want with pass-through storage space.

10.

**DUAL PANE WINDOWS**  
These windows will work for you to ensure that you have the temperature you want! They deflect the heat from entering the coach on hot days and keep the heat secure in the coach on cold days.



11.



**UTILITY COMPARTMENT**  
This service station is as user friendly as it gets and is easily maintainable!

<b>A.</b> Waste Tank Flush Inlet	<b>G.</b> One Piece Rotocast Compartment Tub
<b>B.</b> City Water Inlet	<b>H.</b> Convenient Compartment Light
<b>C.</b> Inlet to Pump	<b>I.</b> 50 Amp Service and Cord
<b>D.</b> Water System Control Valves	<b>J.</b> Shore Line Phone Jack
<b>E.</b> Outside Shower	<b>K.</b> Cable TV Inlet
<b>F.</b> Waste and Gray Tank Dump Valves	

12.

**COACH NET**  
With 24-hour emergency road-side assistance and qualified RV technicians on your side you'll never worry about being stranded again...**Coach Net is here for you!**



For more of everything  
National RV Inc. related  
join us at [NRVCLUB.com](http://NRVCLUB.com)



National RV Club (NRVC) is not affiliated with any other club or organization.  
NRVC has no relationship with the defunct National R.V. Inc. or National R.V. Holdings.  
NRVC has no relationship with REV Group, REV Recreation Group, or their motor home brands.