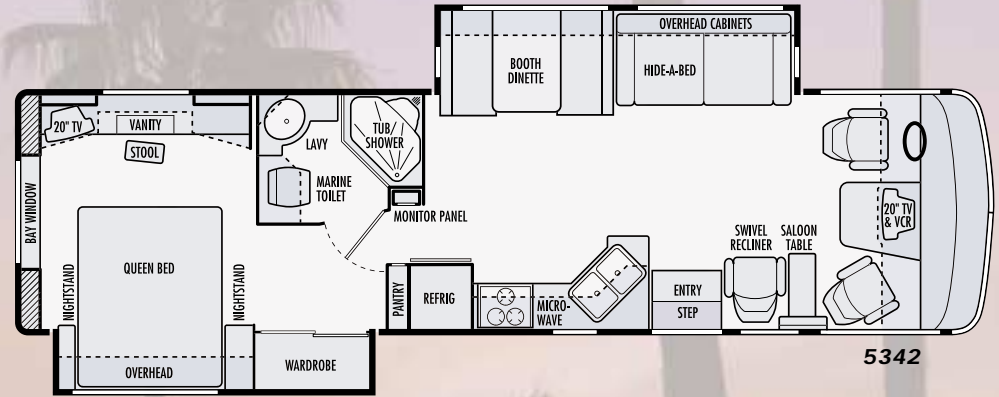
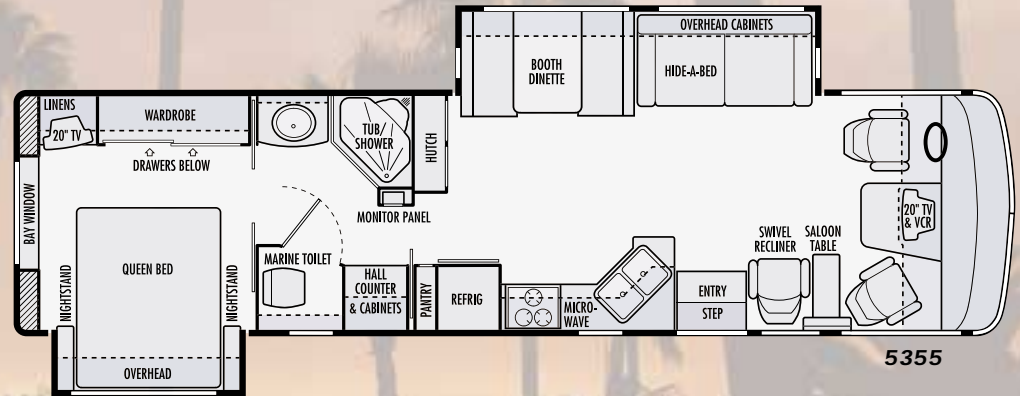


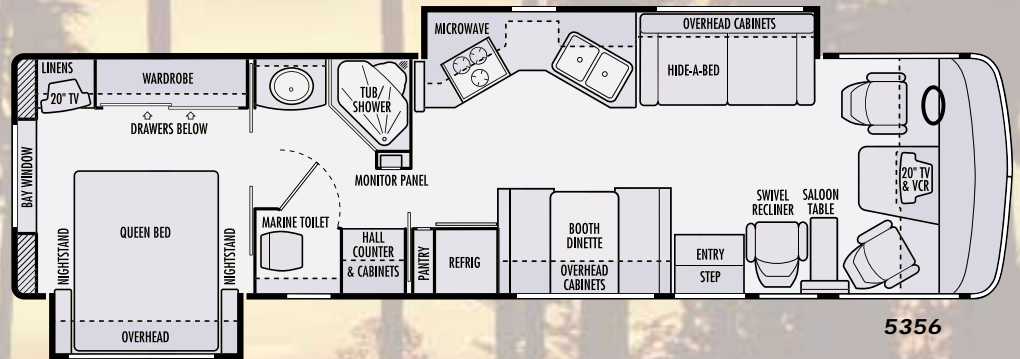
Dolphin



5342



5355



5356



Due to continued product improvement, National R. V., Inc. reserves the right to change materials, colors, specifications and prices at any time without notification. Copyright © 2001 by National R. V., Inc. 08/01

DOLPHIN FEATURES & SPECIFICATIONS

BODY CONSTRUCTION

Duraframe® patented steel sub floor construction
 Steel framed laminated floor
 Steel framed crowned laminated fiberglass roof
 Steel framed laminated fiberglass high gloss walls
 Front and rear molded fiberglass caps
 Full panoramic tinted windshield
 Soft fabric ceiling material
 Electric slide-out room with overhead cabinets (flush floor on lounge slide models only)
 Front and rear molded fiberglass bumpers
 Insulated fiberglass exterior storage compartment doors with integrated paddle latches and gas struts
 Steel framed exterior storage compartment with insulated bottoms
 Lighted storage compartments and service area
 Exterior assist handle
 Aluminum rear ladder
 Awning rail (rain gutter with drip spouts)
 Automotive undercoating as required
 Custom vinyl exterior graphics

COCKPIT FEATURES

JVC® AM/FM stereo and CD with six speakers
 Driver and passenger map light with switch on dash
 Custom dash with full gauge package
 Convenience tray
 Audible turn signals
 Pantographic windshield wipers
 Power steering
 Cruise control
 Tilt steering wheel
 Rear vision system with built-in microphone
 Overhead dash fans (2 speed)
 Power heated rear view mirrors with double convex
 Driver and passenger recliner seats
 12V/120V receptacle and telephone jack
 Passenger work station
 Aviation style sun visors
 Hydraulic leveling jacks with dash mounted controls
 Generator hour meter and control switch
 Auxiliary start switch on dash
 Wraparound privacy curtain with easy reach wand

APPLIANCES & ACCESSORIES

Theater sound module
 8 cu. ft. double door refer

Hair dryer (mounted in bath)
 Dust buster vacuum cleaner
 Three burner cook top with flush mount Corian® range cover
 Space saver convection microwave oven with carousel, built-in light and fan
 Systems monitor panel
 Cable TV hook-up and telephone jack
 TV antenna and booster
 Video control box
 JVC® 20" color TV with remote control living area and bedroom

INTERIORS

Throughout Coach

Solid oak doors and drawers
 Solid oak drawer fronts
 Telestrut hardware on overhead doors
 Ball bearing roller drawer guides

Living Area

74" Wonder-Bed sleeper sofa
 Deluxe rocker recliner with swivel base
 Booth dinette with slide-out storage drawers
 Deluxe nylon carpet and pad
 Day/night shades with designer valances
 Hutch and overhead with beveled mirror
 Solid oak raised panel cabinet doors

Kitchen Area

Slide-out pantry (not available with side by side refrigerator)
 Corian® kitchen countertop with Corian® flush mount stove cover
 Sink cover (wood cutting block)
 Porcelain sink with single lever faucet
 Waste basket
 One piece designer Congoleum® vinyl floor
 Venetian blinds in kitchen and bedroom
 Silverware organizer

Bath Area

Decorative opaque shower glass etching
 Medicine cabinet
 Towel bars in bathroom

Bedroom Area

Head-to-side queen bed with night stands
 Wardrobe with mirrored sliding doors
 Color coordinated bedspread, pillows and shams
 Radius padded headboard
 Bedroom vanity with stool and pull out makeup organizer tray (5342)
 Bed slide with four pull out drawers and storage compartment

Dresser cabinet with four drawers (washer/dryer prep) (5355 and 5356)

ELECTRICAL SYSTEMS & LIGHTS

50 Amp MagneTek® power converter and charger
 50 Amp 120V distribution panel and cord
 Generac® 5.5 kW generator
 Two 6V deep cycle house batteries (217 Amp/Hour)
 Battery disconnect switch for house batteries
 Porch light with interior switch
 110V patio receptacle
 Recessed fluorescent lights in ceiling
 Adjustable reading lights
 Designer lights in living and bedroom areas
 Cosmetic light in bathroom
 10 Watt solar panel (mounted on roof)
 GFI protected electrical circuit
 Entry step light

PLUMBING & LPG SYSTEMS

Coach Exterior

Heated systems compartment with easy access to hook-ups
 Demand water system and water pump
 Holding tank rinse system (black tank only)
 Winterization antifreeze inlet to pump
 Outside shower
 Water heater by-pass valve
 Pressurized water fill with integrated regulator
 Ten gallon gas/electric water heater

Kitchen Area

Water filter in kitchen
 Decorative kitchen and bath faucets

Bath Area

One-piece fiberglass neo angle shower with seat
 Residential single lever pressure balancing Moen® shower faucet with fixed head
 Glass shower door and enclosure
 Porcelain toilet with sprayer

SAFETY FEATURES

Extra large rear view mirrors with double convex
 Driver and passenger three point lap and shoulder seatbelts
 Deadbolt lock on entry door
 Fire extinguisher
 Smoke, carbon monoxide (CO) and LPG detectors
 Egress window(s)

WINDOWS, DOORS & AWNINGS

Radius tinted safety glass windows (sliding windows in living area and jalousie windows in kitchen and bedroom)
 Radius entrance door with clear glass, shade and screen door
 Electric double entry step with light
 Slide-out rooms topper awnings*
 Private toilet window (5355 and 5356)
 Bedroom rear picture window
 Tinted skylight in bathroom

HEATING, VENTS & AIR CONDITIONING

Thermostatically controlled dual 13.5M BTU ducted roof A/Cs
 35,000 BTU electronic ignition furnace
 Ducted heating system
 Attic fan with wall thermostat and rain sensor in galley/living area
 12V roof exhaust fan in bathroom
 Dash automotive heating and A/C system with defroster

OPTIONAL FEATURES

Coach Exterior

Chrome electric horns
 Dual pane windows
 Patio awning with metal cover*
 Slide-out window awnings*
 Bedroom window awning(s)*

Cockpit Area

Six way power driver seat
 Driver door with power window
 JVC® VCR with remote control
 JVC® DVD player
 JVC® CD player (12 disc)
 400 Watt inverter

Living Area

Dining table with two wooden and two folding chairs
 Two wooden folding chairs

Kitchen Area

12 cu. ft. side-by-side refrigerator with icemaker
 21" LPG gas oven
 5342 and 5355: Corian® countertop extension
 Wood plank flooring

Bath Area

5355 and 5356: Combination washer/dryer

Bedroom Area

Day/night shades

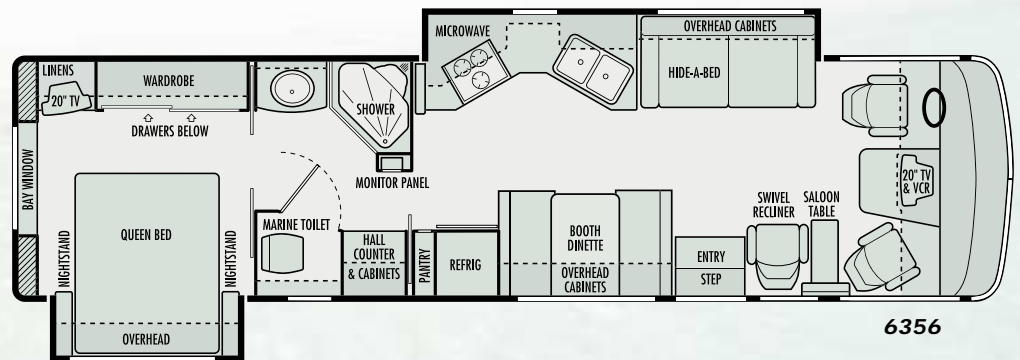
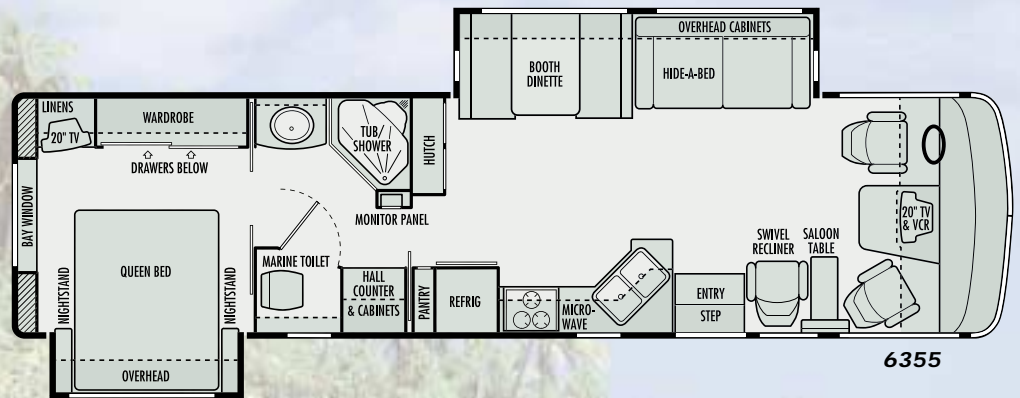
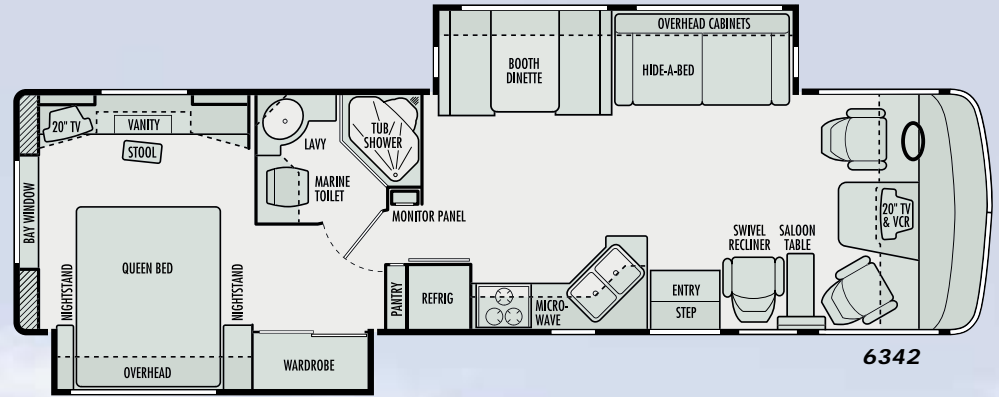
CHASSIS SPECIFICATIONS

	FORD	WORKHORSE
Chassis	Super Duty (22,000 GVWR)	W-22 (22,000 GVWR)
Tires	Goodyear RV 245/70R 19.5 F	Michelin XRV 235/80 R22.5G
Wheels	19.5X6, 8-Lug Steel, SS Liner	22.5X7, 8-Lug Steel, SS Liner
Brakes	Hydro-Boost, 4-Wheel Disc ABS	Hydro-Boost, 4-Wheel Disc ABS
Drive Axle Gear Ratio	5.38:1	5.38:1
Alternator	115 Amp	130 Amp
Chassis Batteries	(1) 750 CCA	(1) 690 CCA
Shock Absorbers	Tuned Bilstein	Tuned Monroe
Chassis Warranty	3 years/36,000 miles	3 years/36,000 miles
Engine	Ford Triton V-10	GM Vortec 8100
Displacement	6.8 Liters (415 cu. in.)	8.1 Liters (496 cu. in.)
Peak Horsepower	310 HP @4,250 RPM	340 HP @4,200 RPM
Peak Torque	425 ft./lbs. @ 3,250 RPM	455 ft./lbs. @ 3,200 RPM
Engine Warranty	3 years/36,000 miles	3 years/36,000 miles
Transmission	Ford 4R100	Allison 1000 Series
Transmission Type	4-Speed Automatic Overdrive	5-Speed Automatic Overdrive
Transmission Warranty	3 years/36,000 miles	3 years/Unlimited miles

WEIGHTS	5342	5355	5356
Ford Chassis			
Gross Vehicle Weight Rating	22,000 lbs.	22,000 lbs.	22,000 lbs.
Gross Combined Weight Rating	26,000 lbs.	26,000 lbs.	26,000 lbs.
Front Gross Axle Weight Rating	7,000 lbs.	7,000 lbs.	7,000 lbs.
Rear Gross Axle Weight Rating	15,000 lbs.	15,000 lbs.	15,000 lbs.
Unloaded Vehicle Weight	TBD	17,400 lbs.	TBD
Maximum Carrying Capacity	TBD	4,600 lbs.	TBD
Cargo Carrying Capacity (CCC)	TBD	2,984 lbs.	TBD
Workhorse Chassis			
Gross Vehicle Weight Rating	22,000 lbs.	22,000 lbs.	22,000 lbs.
Gross Combined Weight Rating	26,000 lbs.	26,000 lbs.	26,000 lbs.
Front Gross Axle Weight Rating	8,000 lbs.	8,000 lbs.	8,000 lbs.
Rear Gross Axle Weight Rating	14,500 lbs.	14,500 lbs.	14,500 lbs.
Unloaded Vehicle Weight	TBD	18,320 lbs.	TBD
Maximum Carrying Capacity	TBD	3,680 lbs.	TBD
Cargo Carrying Capacity (CCC)	TBD	2,064 lbs.	TBD
MEASUREMENTS			
Overall Length	35' 0"	36' 0"	36' 0"
Overall Height (Ford Chassis)	11' 9"	11' 9"	11' 9"
Overall Height (Workhorse Chassis)	12' 4"	12' 4"	12' 4"
Interior Height	79 1/2"	79 1/2"	79 1/2"
Interior Width	98 1/2"	98 1/2"	98 1/2"
Exterior Width	102"	102"	102"
TANK CAPACITIES			
Water Heater	10 gal.	10 gal.	10 gal.
Gray Tank	60 gal.	60 gal.	60 gal.
Black Tank	50 gal.	50 gal.	50 gal.
Fresh Water Tank	90 gal.	90 gal.	90 gal.
LP-Gas Tank (Volume W.C.)	24.2 gal.	24.2 gal.	24.2 gal.

*Not available on CSA units

Dolphin



Due to continued product improvement, National R. V., Inc. reserves the right to change materials, colors, specifications and prices at any time without notification. Copyright © 2001 by National R. V., Inc. 08/01

DOLPHIN LX FEATURES & SPECIFICATIONS

BODY CONSTRUCTION

Duraframe® patented steel sub floor construction
 Steel framed laminated floor
 Steel framed crowned laminated fiberglass roof
 Steel framed laminated fiberglass high gloss walls
 Front and rear molded fiberglass caps
 Full panoramic tinted windshield
 Soft fabric ceiling material
 Electric slide-out room with overhead cabinets (flush floor on lounge slide models only)
 Front and rear molded fiberglass bumpers
 Insulated fiberglass exterior storage compartment doors with integrated paddle latches and gas struts
 Steel framed exterior storage compartment with insulated bottoms
 Lighted storage compartments and service area
 Exterior assist handle
 Aluminum rear ladder
 Awning rail (rain gutter with drip spouts)
 Automotive undercoating as required
 Custom vinyl exterior graphics

COCKPIT FEATURES

JVC® AM/FM stereo and CD with six speakers
 Driver and passenger map light
 Custom dash with full gauge package
 Convenience tray
 Audible turn signals
 Chrome electric horns
 Pantographic windshield wipers
 Power steering
 Cruise control
 Tilt steering wheel
 Rear vision system with built-in microphone
 Overhead dash fans (2 speed)
 Power heated rear view mirrors with double convex
 Driver and extra wide passenger recliner seats
 12V/120V receptacle and telephone jack
 Passenger work station
 Aviation style sun visors
 Hydraulic leveling jacks with dash mounted controls
 Generator hour meter and dash control switch
 Auxiliary start switch on dash
 Wraparound privacy curtain with easy reach wand

APPLIANCES & ACCESSORIES

Theater sound module
 8 cu. ft. double door refer
 Hair dryer with nightlite (mounted in bath)
 Dust buster vacuum cleaner
 Systems monitor panel

Three burner cook top with flush mount Corian® range cover
 Space saver convection microwave oven with carousel, built-in light and fan
 Cable TV hook-up and telephone jack
 TV antenna and booster
 Video control box
 JVC® 20" color TV with remote control in living area and bedroom
 JVC® VCR with remote control

INTERIORS

Throughout Coach

Solid walnut doors and drawers
 Solid walnut drawer fronts
 Telestrut hardware on overhead doors
 Ball bearing roller drawer guides

Living Area

74" Wonder-bed sleeper sofa
 Deluxe rocker recliner with swivel base
 Booth dinette with slide-out storage drawers
 Deluxe nylon carpet and pad
 Day/night shades with designer valances
 Hutch and overhead with beveled mirror (6355)
 Solid walnut raised panel cabinet doors

Kitchen Area

Slide-out pantry (not available with side by side refrigerator)
 Corian® kitchen countertop with Corian® flush mount stove cover
 Corian® countertop extension (6342 and 6355)
 Sink cover (wood cutting block)
 Porcelain sink with Moen® single lever faucet
 Waste basket
 Ceramic tile
 Venetian blinds
 Silverware organizer

Bath Area

Ceramic tile
 Decorative opaque shower glass etching
 Raised panel doors in bath and bedroom
 Corian® bathroom lavatory top
 Medicine cabinet
 Towel bars in bathroom

Bedroom Area

Head-to-side queen bed with Corian® top nightstands
 Wardrobe with mirrored sliding doors
 Color coordinated bedspread, pillows and shams
 Radius padded headboard
 Bedroom vanity with stool and pull out makeup organizer tray (6342)
 Bed slide with four pull out drawers and storage compartment

Dresser cabinet with four drawers (washer/dryer prep) (6355 and 6356)
 Deluxe nylon carpet and pad
 Venetian blinds and valances

ELECTRICAL SYSTEMS & LIGHTS

50 Amp MagneTek® power converter and charger
 50 Amp 120V distribution panel and cord
 Generac® 5.5 kW generator
 Two 6V deep cycle house batteries (217 Amp/Hour)
 Battery disconnect switch for house batteries
 Porch light with interior switch
 110V patio receptacle
 Recessed fluorescent lights in ceiling
 Adjustable reading lights
 Designer lights in living and bedroom areas
 Cosmetic light in bathroom
 10 Watt solar panel (mounted on roof)
 GFI protected electrical circuit
 Entry step light

PLUMBING & LPG SYSTEMS

Coach Exterior

Heated systems compartment with easy access to hook-ups
 Demand water system and water pump
 Holding tank rinse system (black tank only)
 Winterization anti freeze inlet to pump
 Outside shower
 Water heater bypass valve
 Pressurized water fill with integrated regulator
 Ten gallon gas/electric water heater

Kitchen Area

Water filter in kitchen
 Decorative kitchen and bath faucets

Bath Area

One-piece fiberglass neo angle shower with seat
 Residential single lever pressure balancing shower faucet with fixed head
 Glass shower door and enclosure
 Porcelain toilet with sprayer

SAFETY FEATURES

Extra large rear view mirrors with double convex
 Driver and passenger three point lap and shoulder seatbelts
 Deadbolt lock on entry door
 Fire extinguisher
 Smoke, carbon monoxide (CO) and LPG detectors
 Egress window(s)

WINDOWS, DOORS & AWNINGS

Dual pane radius tinted safety glass windows (sliding windows in living area and jalousie windows in kitchen and bedroom)
 Radius entrance door with clear glass, shade and screen door
 Electric double entry step with light
 Patio awning with metal cover*
 Slide-out rooms topper awnings*
 Private toilet window
 Bedroom rear picture window
 Tinted skylight in bathroom

HEATING, VENTS & AIR CONDITIONING

Thermostatically controlled dual 13.5M BTU ducted roof A/Cs
 35,000 BTU electronic ignition furnace
 Ducted heating system
 Attic fan with wall thermostat and rain sensor in galley/living area
 12V roof exhaust fan in bathroom
 Dash automotive heating and A/C system with defroster

OPTIONAL FEATURES

Coach Exterior

Slide-out window awnings*
 Bedroom window awning(s)*

Cockpit Area

Six way power driver seat
 Six way power passenger seat
 Leather package: Driver seat with power, extra wide passenger seat, sofa and recliner
 Leather faced driver seat with power and extra wide passenger seat
 Leather faced sleeper sofa
 Leather faced swivel recliner chair
 Driver door with power window
 JVC® DVD player (replaces VCR)
 JVC® CD player (12 disc)
 400 Watt inverter

Living Area

Dining table with two wooden and two folding chairs
 Two wooden folding chairs

Kitchen Area

12 cu. ft. side-by-side refrigerator with icemaker
 21" LPG gas oven

Bath Area

6355 & 6356: Combination washer/dryer

Bedroom Area

Day/night shades

CHASSIS SPECIFICATIONS	FORD	WORKHORSE
Chassis	Super Duty (22,000 GVWR)	W-22 (22,000 GVWR)
Tires	Goodyear RV 245/70R 19.5 F	Michelin XRV 235/80 R22.5G
Wheels	19.5X6, 8-Lug Steel, SS Liner	22.5X7, 8-Lug Steel, SS Liner
Brakes	Hydro-Boost, 4-Wheel Disc ABS	Hydro-Boost, 4-Wheel Disc ABS
Drive Axle Gear Ratio	5.38:1	5.38:1
Alternator	115 Amp	130 Amp
Chassis Batteries	(1) 750 CCA	(1) 690 CCA
Shock Absorbers	Tuned Bilstein	Tuned Monroe
Chassis Warranty	3 years/36,000 miles	3 years/36,000 miles
Engine	Ford Triton V-10	GM Vortec 8100
Displacement	6.8 Liters (415 cu. in.)	8.1 Liters (496 cu. in.)
Peak Horsepower	310 HP @4,250 RPM	340 HP @4,200 RPM
Peak Torque	425 ft./lbs. @ 3,250 RPM	455 ft./lbs. @ 3,200 RPM
Engine Warranty	3 years/36,000 miles	3 years/36,000 miles
Transmission	Ford 4R100	Allison 1000 Series
Transmission Type	4-Speed Automatic Overdrive	5-Speed Automatic Overdrive
Transmission Warranty	3 years/36,000 miles	3 years/Unlimited miles

WEIGHTS	6342	6355	6356
Ford Chassis			
Gross Vehicle Weight Rating	22,000 lbs.	22,000 lbs.	22,000 lbs.
Gross Combined Weight Rating	26,000 lbs.	26,000 lbs.	26,000 lbs.
Front Gross Axle Weight Rating	7,000 lbs.	7,000 lbs.	7,000 lbs.
Rear Gross Axle Weight Rating	15,000 lbs.	15,000 lbs.	15,000 lbs.
Unloaded Vehicle Weight	TBD	17,400 lbs.	TBD
Maximum Carrying Capacity	TBD	4,600 lbs.	TBD
Cargo Carrying Capacity (CCC)	TBD	2,984 lbs.	TBD
Workhorse Chassis			
Gross Vehicle Weight Rating	22,000 lbs.	22,000 lbs.	22,000 lbs.
Gross Combined Weight Rating	26,000 lbs.	26,000 lbs.	26,000 lbs.
Front Gross Axle Weight Rating	8,000 lbs.	8,000 lbs.	8,000 lbs.
Rear Gross Axle Weight Rating	14,500 lbs.	14,500 lbs.	14,500 lbs.
Unloaded Vehicle Weight	TBD	18,320 lbs.	TBD
Maximum Carrying Capacity	TBD	3,680 lbs.	TBD
Cargo Carrying Capacity (CCC)	TBD	2,064 lbs.	TBD
MEASUREMENTS	5342	5355	5356
Overall Length	35' 0"	36' 0"	36' 0"
Overall Height (Ford Chassis)	11' 9"	11' 9"	11' 9"
Overall Height (Workhorse Chassis)	12' 4"	12' 4"	12' 4"
Interior Height	79 1/2"	79 1/2"	79 1/2"
Interior Width	98 1/2"	98 1/2"	98 1/2"
Exterior Width	102"	102"	102"
TANK CAPACITIES	5342	5355	5356
Water Heater	10 gal.	10 gal.	10 gal.
Gray Tank	60 gal.	60 gal.	60 gal.
Black Tank	50 gal.	50 gal.	50 gal.
Fresh Water Tank(s)	90 gal.	90 gal.	90 gal.
LP Gas Tank (Volume W.C.)	24.2 gal.	24.2 gal.	24.2 gal.

*Not available on CSA units

Due to continued product improvement. National R. V., Inc. reserves the right to change materials, colors, specifications and prices at any time without notification. Copyright © 2001 by National R. V., Inc. 08/01

For more of everything
National RV Inc. related
join us at NRVCLUB.com



National RV Club (NRVC) is not affiliated with any other club or organization.
NRVC has no relationship with the defunct National R.V. Inc. or National R.V. Holdings.
NRVC has no relationship with REV Group, REV Recreation Group, or their motor home brands.