

DOLPHIN

300 TAG

The Motorhome of the 80's

In 1976, Dolphin Camper Company revolutionized the motorhome industry by first introducing the timely and highly successful micro-mini homes that are the forerunners of today's fully self-contained units.

But, we didn't stop there. For 1980 we have even a better idea. The Dolphin 300 Tag Axle! A richly appointed, spacious, completely self-contained motorhome that is aerodynamically styled and economical to drive!

From the first time you step into this engineering marvel, you'll be pleasantly surprised. A lowered floorline gives you more headroom, better handling, and also allows for an aerodynamic low-profile appearance. This means better gas mileage from this proven, peppy little engine. And stopping is no problem at all. The tag axle which allows you to carry a much heavier load while providing more stability and traction, also has its own fully adjustable electric brakes.

The Dolphin 300 Tag Axle is the result of years of proven experience and reputation. If you're a leader yourself, then you'll want to be the proud owner of what promises to be the motorhome of the 80's.



*note fender dual
1979
1980*





SPECIFICATIONS

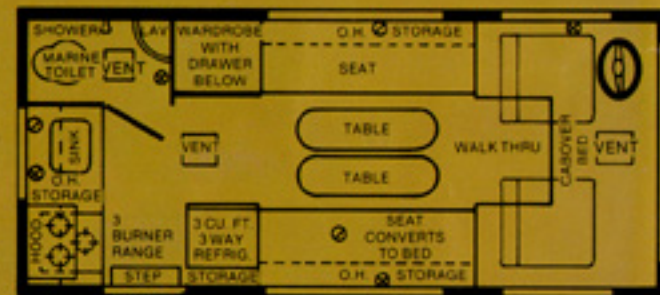
Cab & Chassis Specifications: 4650 lbs. Gross Vehicle Weight • Toyota Chassis w/110" Wheelbase • 2189 cc Engine • 4 Speed Transmission • Dual Rear Wheels • Tag Axle w/Supporting Extra Springs and Heavy Duty Shocks • Adjustable Electric Brakes for Additional Braking Power • 7.50 x 14 x 6 Ply Rated or Equivalent all Around • Spare Tire & Wheel • Custom Side Rear View Mirrors • Deluxe Carpeting in Cab • Bucket Seats w/Custom Upholstery • Custom Door Panels • Hose Carrying Rear Bumper

Motor Home Section: Fully Self Contained • Shower Room w/Pan and Wash Basin • Telephone Type Shower Head for Water Conservation • Marine Toilet • 22 Gal. Waste Holding Tank • 16 Gal. Fresh Water Tank • Fast Recovery 6 Gal. Hot Water Heater • 5 Gal. Propane Tank w/Gauge • Carpeted Throughout • Large Radius Tinted Sliding Windows • Demand Water Pump • Stainless Steel Sink in Kitchen • 3 cu. ft., 3-

Way Refrigerator • 3 Burner Range & Range Hood • Custom Pleated Drapes w/Shears • Custom 5" Polyfoam Cushions • Low Voltage Clock • Separate Screen Door • Porch Light • Fire Extinguisher • 4 Roof Vents • Roof Rack & Ladder • Pre-Wired for 110V Roof Air • Custom Paint on Sides • Sewer Hose

Optional Equipment: Cab Dash Air Conditioning • Pla Cool Evaporative Cooler • Refrigerated Roof Air Conditioner — 7,000 BTU • Dual Battery System • 4 Burner Range w/Oven • 10,000 BTU Wall Heater w/Thermostat & Blower • AM/FM 8-Track or Cassette Stereo

Standard Construction: Sandwich Panel Floor w/Styrofoam Insulation • Metal Underbelly • 1½" Fiberglass Insulation in Roof, Sidewalls, and Backwall • Taper Roof Rafter — High Center for Proper Drainage • All Glued & Screwed Construction • Sandwich Panel Styrofoam Insulation Under Mattress Floor • Baked Enamel Aluminum Exterior



Due to continual product improvement, we reserve the right to change materials, colors, specifications, and prices at any time without notification.

AUTHORIZED DEALER

 **DOLPHIN**
DOLPHIN CAMPER CO.

9790 Glenoaks Blvd., Sun Valley, Ca. 91352
(213) 768-5610 (213) 875-0398

DOLPHIN

STRETCH 500

The Ultimate in Micro-Mini Motor Home Luxury

In this day of imitations and copies, there's one thing that can't be substituted. Experience. For many years now, Dolphin Camper Company has established itself as the trendsetter in the industry. When everyone else was still trying to figure out a way to make those large gas-guzzling motorhomes economical, Dolphin was heading in the direction that was inevitable. The Micro-Mini.

Now, several years later, the Micro-Mini has established itself as a popular alternative for the RV'er. Gas prices are higher, and we find you, the public, still want the freedom and independence of getting away without the unreasonable sacrifices. This is why we've built the Stretch 500.

From the first time you step into this new breed of motorhome, you'll see that it all makes sense. You'll marvel at the interior richness, spaciousness, and ceiling height that you would normally associate with the larger motorhomes. A low profile outward appearance cuts down wind



resistance adding to the already economical powerplant.

Time for personal relaxation and entertainment is at a premium these days, therefore, every dollar you spend must be worthwhile. The Stretch 500 is a way to stretch your investment by going with a quality, proven product. When our name goes on, we're putting our reputation on the line.

1979

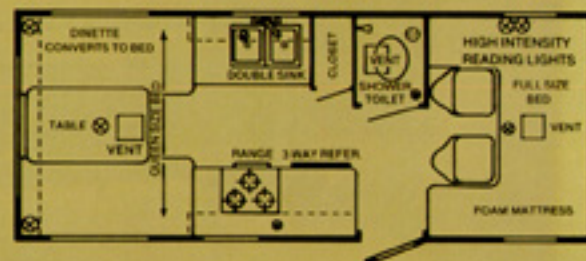


STRETCH 500

19½ FEET
OF SOLID COMFORT

Chassis Specifications

4600 lbs. Gross Vehicle Weight •
Toyota Chassis w/132" Wheelbase •
2189 CU. Engine • 4 speed transmission • Heavy Duty overload springs • Gabriel air shocks • Bucket seats with custom upholstery • Custom door panels • Custom paint striping • Custom wheel covers • Custom mirrors • Spare tire & wheel • Hose carrying rear bumper • Tires 7.50 x 14 x 6 ply front, L 60 x 14 rear



Motor Home Section

- Large Radius tinted sliding windows • Carpeting throughout • Custom drapes & upholstery • Shower • Marine toilet • 3 cu. ft. 3 way refr. • 3 burner range w/range hood • Hot water heater • Stainless steel sink, double • Demand water system • 110 Volt converter w/25' power cord • 20 gallon fresh water tank • Dual waste holding tanks • 5 gallon propane tank w/sight gauge • City water hookup • Lots of drawers • Bullet

- reading lights in Cabover • Low voltage clock • Reading lights under rear overhead • Fiberglass cab collar • 3 roof vents • Separate screen door • Porch light • Drain hose & fire extinguisher

Optional Equipment

- Oven w/four burner range • 4 cu. ft. 3 way refr. • Dual battery • 10,000 BTU Heater • Automotive Air • Roof air • Dual wheels

Due to continual product improvement, we reserve the right to change materials, colors, specifications, and prices at any time without notification.

AUTHORIZED DEALER

 **DOLPHIN**
DOLPHIN CAMPER CO.

9790 Glenoaks Blvd., Sun Valley, Ca. 91352
(213) 768-5610 (213) 875-0398

For more of everything
National RV Inc. related
join us at NRVCLUB.com



National RV Club (NRVC) is not affiliated with any other club or organization.
NRVC has no relationship with the defunct National R.V. Inc. or National R.V. Holdings.
NRVC has no relationship with REV Group, REV Recreation Group, or their motor home brands.