



Dolphin

T W O T H O U S A N D F I V E



FEATURES • MATERIALS • METHODS • SUPPORT

LIVE THE LEGEND...

...THE 2005 DOLPHIN

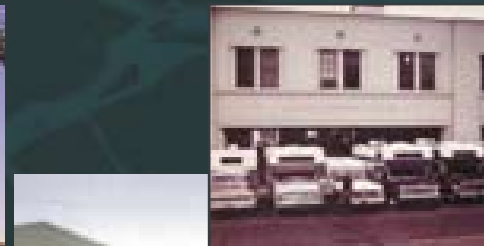
The Dolphin name has adorned some of the most beloved recreational vehicles for over forty years. That kind of longevity doesn't come easily. It takes decades of refinement on products that RV enthusiasts come back for over and over. Take a look around the 2005 Dolphin and discover what legions of loyal Dolphin owners have known for years. You'll discover a coach that's worthy of the legend that defines it.



DOLPHIN 5355 • PARADISE • CHERRY

A 41-YEAR LEGACY OF RV EXCELLENCE!

Over the past 41 years, National RV has grown from a small camper manufacturer to one of America's premiere builders of class "A" motorhomes. Loyal Dolphin owners have grown up right along with us, graduating from campers to mini motorhomes to luxury class "A" motorhomes. That loyalty was earned through an unwavering commitment to quality, value and innovation.



San Fernando, CA home of Dolphin Camper Company, 1968-1971.



Breaking Ground at National RV's new Perris, CA facilities, 1985.



SINGLE LOCATION MANUFACTURING

National RV has experienced phenomenal growth over the past 41 years but has grown by reinvesting in its own products and facilities in sunny Southern California. Designing and building everything at a single location results in consistent quality across product lines, increased efficiencies and a stable, loyal workforce in the company's home community. When you buy a National RV, you'll never wonder whether it came from our "best" plant. They're all built in Perris, and they're all the best we can do.

ALWAYS LOOKING FORWARD

Four decades have passed since our humble beginnings, yet there is still so much to learn. Emerging technologies, demographics and customer wants are constantly shaping the idea of what a



motorhome should be. National RV's product development team is driven by customer feedback and the possibilities of new technologies. With a history of important innovations and patents already under our belt, National RV continues to research, develop, and invest in the latest manufacturing technologies to ensure ever increasing levels of quality and efficiency.



Whether you choose the full-featured Dolphin or the luxurious Dolphin LX, both built on the awesome Workhorse W-series chassis, you will own a motorhome that far surpasses the competition in every aspect of features, quality and style. And you'll join a legion of dedicated motorhome enthusiasts whose loyalty and love for Dolphin recreational vehicles has spanned four decades.



DOLPHIN KEY FEATURES

CHASSIS & DRIVETRAIN

- Workhorse® W-22 and W-24 chassis
- Patented Duraframe® Chassis System
- GM® Vortec 8100 340HP engine
- Allison® 5-speed automatic transmission with overdrive

INTERIORS

- Professionally designed interior decors with rich, color-coordinated fabrics, a choice of fine grain hardwoods and Corian® countertops
- "Sandpiper Deluxe" residential style inner spring pillow top mattress
- Kustom-Fit® steel framed furniture
- Multiple entertainment features

HEATING & AIR CONDITIONING

- Circular Airflow air conditioning with basement-mounted 2-ton high efficiency HVAC system and dual in-ceiling ducts
- Dual 20,000 BTU ducted furnaces

ELECTRICAL & PLUMBING SYSTEMS

- Onan® 7.0kW generator
- 1,000 watt inverter/converter
- One-piece fiberglass shower
- 10 gallon gas/electric water heater

EXTERIOR FEATURES

- Patio awning with metal cover
- High gloss gelcoat fiberglass exterior
- Five spacious multiple-slide floorplans in coach lengths from 32 to 37 feet

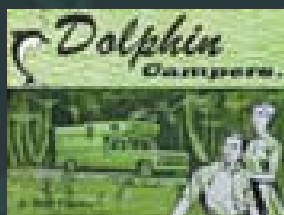
See Complete Features List on Page 22.

Today's Dolphin is the culmination of 41 years of engineering and refinement to satisfy the most discerning RV enthusiasts in the world—our customers.

DOLPHIN'S 41-YEAR HERITAGE

TIMELINE

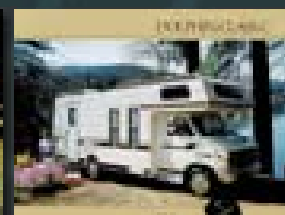
1964 Dolphin Camper Company is born and soon gains a reputation for quality and customer satisfaction.



1976 Dolphin invents the "micro-mini" motorhome, signaling its entry into the motorized RV marketplace.



1984 The popular Dolphin brand name has adorned campers, trailers, class "C" and micro-mini motorhomes.



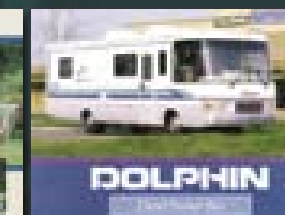
1986 Newly re-named National RV introduces the first Dolphin class "A" with a new level of luxury and styling.



1990 National RV's Dolphin is an early adoptee of the "basement" style coach and chassis design.



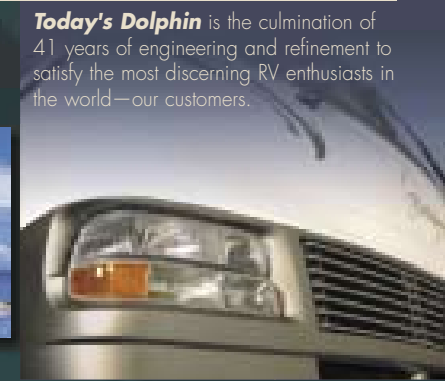
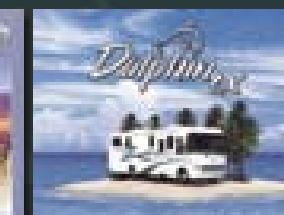
1993 The Dolphin Diesel ushers in the "bus-like" exterior styling that would soon permeate all National RV motorhomes.



2000 At the turn of the century Dolphin is one of America's most loved motorhomes with legions of loyal repeat owners.



2002 Dolphin LX debuts as an upscale version of the Dolphin, pushing the limits of luxury in gasoline motorhomes further.



TAKE A VIRTUAL FACTORY TOUR!

Building a Better Motorhome

Every RV manufacturer knows HOW to build a better motorhome; National RV chooses to DO IT. Fundamental concepts—steel is stronger than aluminum, block foam insulation won't sag like blanket insulation—determine the quality of a motorhome over the long haul. National RV chooses to adhere to those concepts. And with thousands of National RV products on the road and in use today (some for nearly 40 years now) the success of this strategy is evident in every happy owner. To learn more about what it takes to build a better motorhome, follow the virtual factory tour, which begins right here!

Computer Aided Design

Every motorhome begins as an idea. In our Engineering Department, skilled drafters use the latest Computer Aided Design software to model the coach in cyberspace, ensuring a proper design and true fit of every component **before** a single piece is machined or cut.



Prototyping and Toolmaking

All molds, jigs and other manufacturing fixtures are built and maintained in-house to ensure consistent quality from part to part. While National RV takes pride in its use of the latest technologies wherever possible to improve manufacturing quality and efficiency, certain tasks still require the hands-on attention of skilled craftsmen. National RV's toolmakers are an excellent example, crafting by hand the molds and jigs that will ensure the consistent style and quality of production pieces for months and years afterward.



COME HOME TO A DOLPHIN MOTORHOME

Every Dolphin motorhome is designed with an emphasis on home—the comforts of home, the style of home, the conveniences of home—the quality of home. Throughout Dolphin's vast interior expanses you'll find it all: the comfort, style, convenience and quality of a well furnished home—your home. Dolphin: there's no place like it!



DOLPHIN 5355 • PARADISE • CHERRY

PARADISE

Dolphin's stately Paradise décor features a pleasing palette of colors and patterns in a fun tropical motif.



DOLPHIN 5355 • PARADISE • CHERRY



DOLPHIN 5355 • PARADISE • CHERRY

CLICK ON www.nationalrv.com FOR BUSSINESS INFORMATION



Custom vinyl graphics

Dolphin motorhomes feature a sweeping custom exterior graphics package made of durable UV-resistant vinyl against gleaming polar-white fiberglass gel-coat.

NEWPORT

Dolphin's cheerful Newport décor suggests family fun in the surf, sand and sun.



DOLPHIN 5355 • NEWPORT • MAPLE



DOLPHIN 5355 • NEWPORT • MAPLE

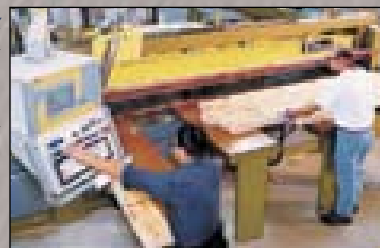
MAJOR DIFFERENCES BETWEEN DOLPHIN AND DOLPHIN LX

Dolphin	Dolphin LX
INTERIOR STYLING <ul style="list-style-type: none"> Paradise or Newport interior décors (shown this page) Standard maple or optional cherry wood 	<ul style="list-style-type: none"> Satin Nickel or Adobe interior décors (see pages 8-9) Standard maple or optional cherry or walnut wood
KITCHEN & BATH <ul style="list-style-type: none"> Designer vinyl flooring Wood cutting board sink cover Laminate lavy counter top 8 cu. ft. refrigerator standard 	<ul style="list-style-type: none"> Ceramic tile with inlaid accents Corian sink cover Corian lavy counter top 10 cu. ft. refrigerator with icemaker standard
ENTERTAINMENT <ul style="list-style-type: none"> Multi-disc CD changer optional Home theater entertainment package optional 	<ul style="list-style-type: none"> Multi-disc CD changer standard Home theater entertainment package standard
EXTERIOR STYLING <ul style="list-style-type: none"> Custom vinyl graphics Chrome electric horns optional 	<ul style="list-style-type: none"> Partial paint and vinyl graphics Chrome electric horns standard
FURNISHINGS <ul style="list-style-type: none"> OptimaLeather® cockpit seating optional OptimaLeather® recliner optional 	<ul style="list-style-type: none"> OptimaLeather® cockpit seating standard OptimaLeather® Euro-recliner with ottoman standard

FACTORY TOUR CONTINUED

Putting Technology to Work

Throughout the plant, high-tech equipment is used to turn engineered plans into precisely milled components. National RV has invested heavily in the latest manufacturing technologies to ensure consistent quality as well as to maximize manufacturing efficiencies.



A Highly Skilled Workforce

In today's manufacturing environment, it takes skills to remain competitive. National RV has trained thousands of employees in everything from electronics to welding to occupational health and safety.



In-House Manufacturing

National RV strives to build as many of the coach components as possible in-house. From ABS plastic thermo-forming to fiberglass to wiring harnesses, National RV is a **manufacturer**, not merely an assembler. In-house manufacturing enables National RV to closely monitor quality at every stage of manufacturing. Another benefit is that lower costs, as only one company is trying to make a profit on the same component. This is one way in which National RV is able to pack more features—and higher quality—into motorhomes than similarly priced models from competing motorhome "assemblers".



DOLPHIN LX DEFINES LUXURY LIVING

Dolphin LX takes the luxury appointments of the Dolphin motorhome a step further, with even more opulent textures and fabrics, plus a host of standard equipment upgrades. Further blurring the lines between gas and diesel luxury motorhomes, Dolphin LX sets the standard of luxury out of the reach of many competing gasoline motorhomes.



DOLPHIN LX 6355 • SATIN NICKEL • CHERRY

SATIN NICKEL

Available in Dolphin LX motorhomes, the Satin Nickel décor consists of rich, high contrast fabrics and modern patterns and designs, complemented by stainless steel fixtures and hardware throughout the coach.



DOLPHIN LX 6355 • SATIN NICKEL • CHERRY



Elegant light fixtures enhance the beauty of Dolphin's luxurious interior.

www.nationalrv.com

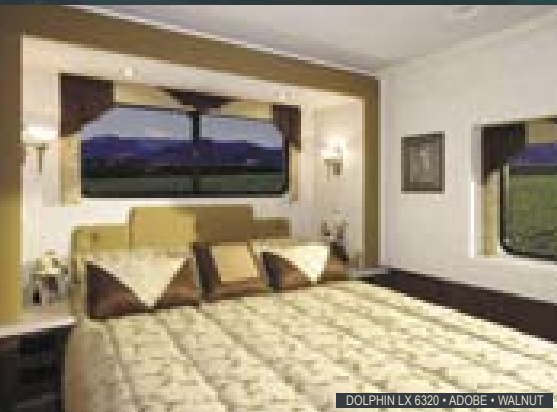


Paint and vinyl custom graphics

Dolphin LX features a custom exterior graphics scheme of meticulously applied Sikkens paint and durable UV-resistant vinyl, in a choice of two vibrant color palettes (please see back cover).

ADOBE

The opulent browns and tans of the Adobe décor available on Dolphin LX motorhomes exude luxury and refinement uncommon among gasoline motorhomes.



DOLPHIN LX 6320 • ADOBE • WALNUT

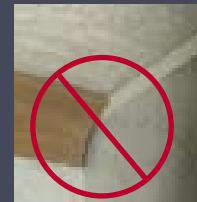
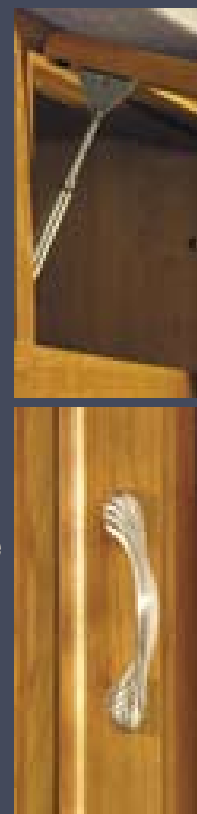


DOLPHIN LX 6320 • ADOBE • WALNUT

SUPERIOR CABINETY CONSTRUCTION

Take a close look at the cabinetry inside a Dolphin motorhome. You'll find many thoughtful details that set Dolphin apart:

- Carpet lined kitchen cabinets reduce noise and protect your pots and pans during transit.
- Solid hardwood raised panel or flat panel cabinet doors and drawer fronts.
- Beautiful residential quality pulls, hinges and hardware.
- Telestrut hardware on upward opening overhead cabinet doors conveniently holds them open, then holds them in their positive catches when closed.
- Storage space everywhere such as a convenient vertical pull-out pantry and huge storage areas under the dinette seats with convenient slide-out storage bins.
- Accuride® steel ball bearing drawer glides provide 45 lbs. of smooth operating drawer capacity; compare that to competitors' 7 lb. drawer capacity using plastic drawer glides. These drawers are constructed using the time-honored dovetail joint method, not staples. Each drawer is finished with a solid hardwood drawer front for lasting beauty and structural integrity.
- Superior fit and finish with tight cabinet-to-wall fit; compare this to the large gaps covered with gimp molding on competitors' motorhomes — **there is no gimp molding in a Dolphin!**

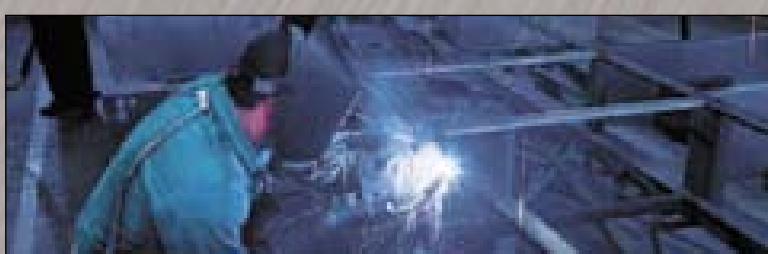


Gimp molding hiding gaps on competitor's motorhome. This is NOT A NATIONAL RV!

FACTORY TOUR CONTINUED

Cold Hard Steel

All of the structural components of the motorhome—subfloor structure, sidewalls, floors, bulkhead and the arched roof—are fabricated from steel. Competitors may use aluminum, wood or other materials to save costs, but none are as strong as cold hard steel.



The Patented Duraframe®

In the chassis shop, the patented Duraframe® all-steel subfloor system is constructed on precision assembly jigs. Fabricated from carefully formed steel components, the Duraframe® is welded at every joint to provide unyielding strength over the long haul. The completed Duraframe® substructure is carefully lowered onto the motorhome chassis then the two are welded together to form a permanent, super-strong structure. Next, a generous coat of rust-inhibiting paint is applied to the entire assembly before it enters the main assembly line.



ENTERTAINMENT & CONVENIENCE

Many thoughtful amenities help make Dolphin the most livable coach around. From usable storage space carved into every available nook to a wide array of entertainment features and options, you may even forget that you're in a motorhome... until you realize you're in a Dolphin.



DOLPHIN LX 5355 • PARADISE • CHERRY



DOLPHIN LX 5355 • PARADISE • CHERRY

Plenty of storage is found throughout the motorhome.

Cockpit seating

swivels around to create a comfortable conversation area. OptimaLeather (shown) is standard on Dolphin LX, optional on Dolphin.



DOLPHIN LX 6320 • ADOBE • WALNUT

Flip-up table provides a convenient place to enjoy a cup of coffee with a friend.



Storage space is found in every conceivable location, including the dinette seats.



27" flat screen TV plays programming from cable TV hookup, TV antennae, VCR/DVD or optional KingDome® satellite dish.



VCR/DVD combo player with video distribution unit is standard on Dolphin (home theater entertainment package optional on Dolphin, standard on Dolphin LX).



DOLPHIN LX 6320 • ADOBE • WALNUT

WonderBed sleeper sofa quickly converts to comfortable guest sleeping quarters.

BED, BATH & HALL

The attention to detail unique to Dolphin extends to the farthest reaches of the coach, down the hall and into the bedroom. Wherever you look, National RV has stacked the deck against the competition with quality and style.



DOLPHIN LX 6342 • SATIN NICKEL • MAPLE



Sandpiper Deluxe is National RV's exclusive comfort pillow top mattress.

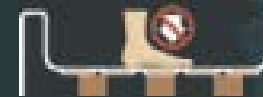


Aromatic cedar panels are inside the wardrobe.

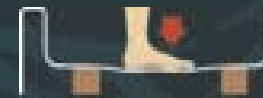


One-piece fiberglass shower is manufactured "in-house" at National RV to ensure quality, and is crafted of thick fiberglass with plenty of reinforcement for a sturdy, rigid feel. Step into a competitor's shower and you'll feel the difference as the lower quality plastic shower pan gives under your weight.

National RV Shower:



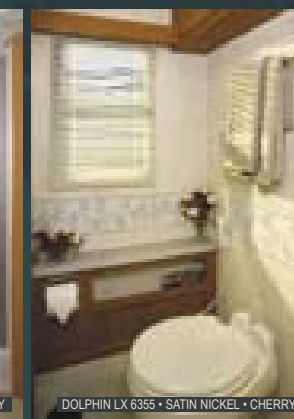
Competitors' Shower:



Extra storage is found in drawers beneath the wardrobe, under the bed and throughout the coach.



A variety of bathroom configurations ensure that there is a Dolphin to suit anyone's tastes.



Porcelain toilet with sprayer shown in private toilet room with window (certain floorplans only).

CIRCULAR AIRFLOW™



THE NEW STANDARD IN MOTORHOME AIR CONDITIONING

Using a powerful Coleman® basement-mounted air conditioner and heat pump combined with National RV's dual in-ceiling cold air ducts, Dolphin achieves true residential style circular flow of properly cooled or heated, filtered air. The Coleman® unit features dual compressors which work together for optimum cooling efficiency—the second unit comes online only when needed. National RV's unique rear output duct works in concert with the ceiling vents and intake registers mounted near the floor to provide truly circular airflow for consistent, even climate control. When fall comes, the Coleman® basement unit goes into heat pump mode to provide efficient whole-house warming.

FACTORY TOUR CONTINUED

Cabinet Shop

In another part of the plant, cabinetmakers are busy crafting the wooden fixtures to be placed inside the coach. Computer Aided Design (CAD) provides precisely fit components, then skilled craftsmen bring them together into a sturdy, elegant finished product.



Assembly Line

Once it arrives on the assembly line from the chassis shop, the building of the coach "house" begins. The floor is laid, cabinets set into place, and all wiring and plumbing routed.



Tubular Steel Coach Body Frame

In the coach body shop, all coach body components—sidewalls, floors and roofs—are constructed with frames of tubular steel. Here is where precision pays off, as a properly fabricated wall frame will ensure a tight coach body structure over the long haul.



NOW YOU'RE COOKING!

Throw away your "camping recipes"! With Dolphin's well-appointed kitchen, preparing great meals is as easy and convenient as in your home kitchen. A large GE® convection microwave oven and your choice of refrigerators up to 12 cubic feet are sure to delight the chef in the family.

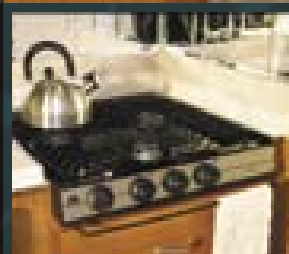


DOLPHIN 5355 • PARADISE • CHERRY



Corian accent backsplash is both functional and beautiful.

Corian counter extension provides extra food preparation space when you need it. **Pull-out pantry** neatly organizes food items in a compact space.



High output cooktop with three burners and removable Corian cover.

12 cu. ft. side by side refrigerator with ice maker is a popular option.



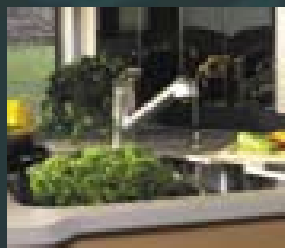
DOLPHIN LX 6320 • ADOBE • WALNUT



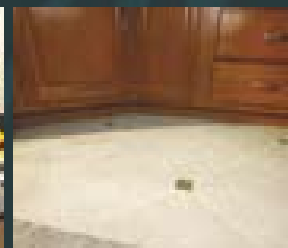
Pull-out cabinet trays make it easy to reach those seldom-used items that tend to get pushed to the back.



Silverware drawer is now 1" deeper and features a Rubbermaid organizer.



Stainless steel under-mount sink with Corian cover.



Hand laid ceramic tile adorns the kitchen floor of Dolphin LX (designer vinyl flooring on Dolphin).

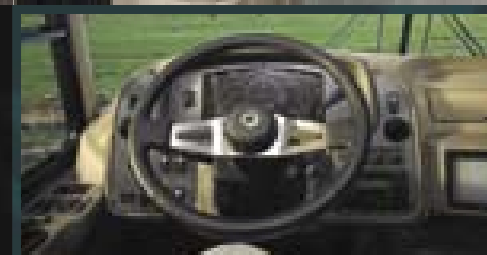
LET THOSE MILES MELT AWAY

Since getting there is half the fun, we've made Dolphin's cockpit a place of comfort, convenience and performance. Long days behind the wheel will fly by with everything you need to enjoy your driving experience at your fingertips.

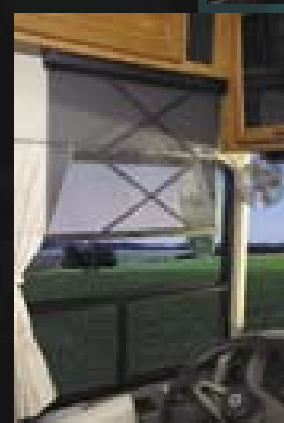


Push-button transmission shifter is featured on units built on W-24 chassis.

Rear vision camera with up-down pan.



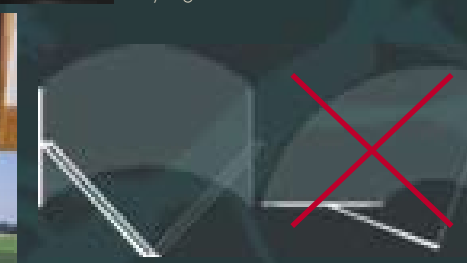
Instruments are clearly and intuitively labeled, and switches are illuminated for easy night time identification.



Optional side sun shade easily deploys and stows away when not in use.



Optional electric sunvisor deploys at the touch of a button.



Pantographic windshield wipers (left) clean a wider swath of windshield than typical radial windshield wipers (right) of similar blade length.



KUSTOM-FIT® SEATING

Built especially for National RV in our color coordinated fabrics, this cockpit and living area seating exceeds the comfort and quality of furniture in much more expensive "highline" motorhomes. The exclusive cold poured foam and fully welded steel frames will provide years of driving and relaxation comfort.



COLD Poured SEAT FOAM HAS A 10 YEAR WARRANTY!

Each cushion is formed as a single piece, molded in the correct shape. Competitors' seats are pieced together from blocks of foam which can come unglued and fall apart.

STEEL SEAT FRAME

Constructed of welded tubular steel for superior strength; carries a lifetime warranty.



96" driving space: The contoured fiberglass lower skirt effectively creates a 96" (standard width) driving space for a coach that boasts all of the living space of a 102" wide body motorhome. This makes it easier to maneuver through parking lots and tight spaces without striking curbs and other obstructions with the coach's lower body skirting.

FACTORY TOUR CONTINUED

A Cocoon of Insulation

The entire coach is literally surrounded in high density EPS block foam insulation. Each piece is precisely cut to fit between the members of the tubular steel frame then laminated into place. This insulation will never settle or sag like fiberglass blanket insulation.



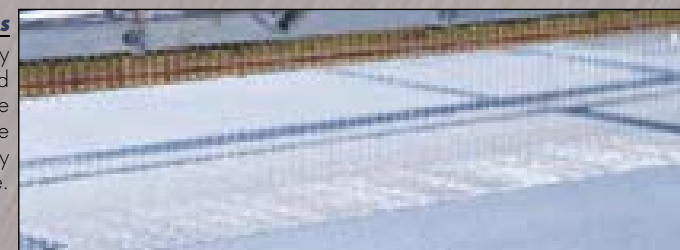
Vacuum Lamination

All coach body panels are vacuum laminated for unequalled strength and durability. This process uses advanced adhesives and vacuum to bond the various input components into a single, inseparable unit.



Advanced Industrial Adhesives

National RV's lamination process uses specially formulated adhesives to permanently bond the components together into a single, inseparable piece. Computer controlled extruders precisely meter the adhesive on to the workpiece between each layer of the assembly. As the extruder passes, a fine mist of water is emitted over the adhesive as a catalyst. From this point, skilled workmen move swiftly to complete the assembly and move it into the vacuum table before the adhesive begins to cure.



YOUR CHOICE OF SPACIOUS FLOORPLANS

5320/6320

Shown in standard configuration.

5342/6342

Shown with optional retractable dining table with chairs and wall storage cabinet with shelf, in place of the standard booth dinette.

5355/6355

Shown with optional 12 cu. ft. refrigerator with ice maker, which deletes the pantry.

5375/6375

Shown with optional washer/dryer, which replaces the hall counter and cabinets.

5376/6376

Shown in standard configuration.



FOUR SEASONS COMFORT

Year-round livability is engineered into every aspect of a Dolphin motorhome.

DUAL IN-CEILING INSULATED AC DUCTS

Insulated for optimum efficiency, with adjustable registers to ensure even climate control or targeted climate zones.

CIRCULAR AIRFLOW™ AIR CONDITIONING

Please see page 11.

CENTRALLY LOCATED MONITOR PANEL

With automated climate controls.

35,000 BTU DUCTED FURNACE

Plus a second, 20,000 BTU furnace on 5375/6375.

A COCOON OF INSULATION

The entire coach is enveloped in highly efficient EPS block foam insulation, laminated right into the sidewalls, floor and ceiling.

FAN-TASTIC® VENT

With thermostat and rain sensor for automatic coach ventilation.

OPTIONAL WINDOW AWNINGS

Help to protect the coach interior from direct sunlight.

DUAL PANE WINDOWS

Standard equipment dual pane windows are insulated and tinted for UV protection.



FACTORY TOUR CONTINUED

In the Basement

Stylishly contoured molded fiberglass compartment doors flank either side of the coach. EPS foam insulation runs throughout the basement floors, ceiling and doors. Paddle latches and gas charged struts aid in opening compartment doors with ease.



Reap What We Sew

National RV's professionally designed interior décors come to life in the upholstery shop, where bolts of opulent fabrics are transformed into richly decorated window treatments, throw pillows, bedding and more.



The Main Assembly Line

The heart of National RV's production facilities is the main assembly line. Here, a never-ending procession of motorhomes makes its way *sideways* through the plant on a specialized rail system. A veritable beehive of activity, the main line is where most of the coach's manufactured components are installed—name brand appliances, comfortable furnishings, interior lighting and fixtures. Near the end of the line, special UV-resistant graphics are applied and a nearly complete new motorhome emerges.



FULL FEATURED INSIDE & OUT!

Walk around a Dolphin and you'll discover an uncommon attention to detail. Open a storage compartment door and see through the cavernous storage bays, all the way to the other side. Run a hand along the sleek, molded fiberglass body panels and feel the quality that sets Dolphin apart from the others.



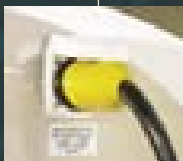
No roof AC units mean improved height clearance and no unsightly condensation runoff.

A&E awning with metal cover is standard equipment.

High-mounted mirrors allow unobstructed walk-around and "overview" of adjacent traffic lanes.

Halogen automotive headlights provide a broad pattern of bright, white light.

FULL-FEATURED ELECTRICAL SYSTEM



50-amp service & cord provide plenty of shore power for comfortable living. Power cord plugs into sidewall receptacle for easy hookup and storage.

1,000 watt inverter/converter with remote on/off switch (optional 2,000 watt inverter available on Dolphin LX).

Two 6V deep cycle house batteries and one 12V maintenance-free chassis battery, located in convenient entry step battery compartment.

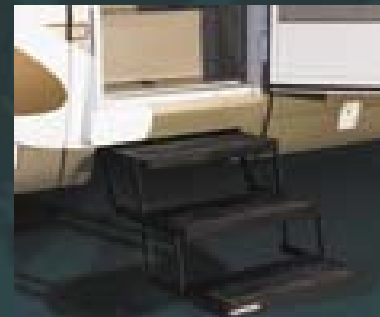
Remote battery disconnect switch allows quick, convenient isolation of house batteries to prevent power drain.

Onan® generator: The reliable Onan® 7.0 kW generator provides plenty of power no matter how far you are from civilization.

Resettable breakers: Control of Dolphin's advanced house electrical system is at your fingertips with an ingenious new breaker panel conveniently located inside the coach. Now, rather than having to carry—and find—extra fuses whenever a circuit is overloaded, simply push the breaker to reset it. All circuits are clearly labeled for easy identification.

Wall switches for ceiling lights are centrally located to make turning ceiling lights on or off more convenient.

10W solar panel keeps batteries charged up during prolonged periods of inactivity.



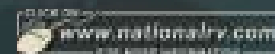
4-point hydraulic leveling jacks are more reliable and provide better stability than 3-point and pneumatic leveling systems.

Triple entry step is easier to climb than a double-step.



Onan® generator

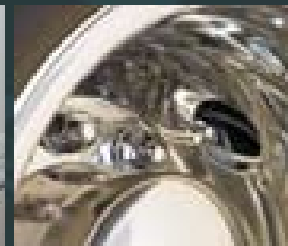
Huge storage bays provide plenty of cargo space for your gear.



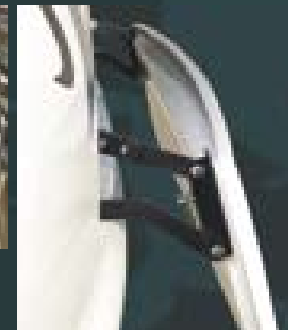
Slide-out topper awnings keep runoff and debris off of the slide-out box.



Flush-shut slide-out seals provide a sleek appearance and reduced wind noise.



Valve extensions make the job of checking tire pressure quick and easy.



Pantographic hood hinges and "finished" backside of hood speak to National RV's attention to quality and detail even in seldom-seen areas of the coach.

FULL-FEATURED PLUMBING SYSTEM

All plumbing controls are clearly labeled, intuitively arranged and housed in a molded ABS, easy-to-clean compartment with drainage basin.

Inlet to pump allows drawing fresh water from any external tank or vessel. City water inlet is also provided for pressurized water hookups.

Thoughtful conveniences include an outside shower and soap dispenser.

Color-coded water lines throughout the coach allow easy identification for quick troubleshooting.

Three water pump switches conveniently located at kitchen, bathroom and plumbing compartment.



Easy access to engine maintenance points.

BASEMENT COMPARTMENTS



Dolphin's storage compartments rival those of motorhomes costing thousands more, and far surpass any competitors in Dolphin's price range.

FIBERGLASS DOORS

The industry standard is to save thousands of dollars at your expense by using cheap, plain looking flat panel compartment doors. By contrast, Dolphin's compartment doors are hand made with a stylishly contoured, molded fiberglass shell. Unlike the industry standard flat panel doors, these doors curve inward closer to the road to avoid rocks, curbs and other road hazards. EPS block foam insulation is laminated into the door, which is finished with a durable stainless steel piano hinge and convenient paddle latch.

LAMINATED FLOORS

Dolphin's storage compartment floors are made with the same vacuum lamination process as the sidewalls, roof and coach floor. This includes sturdy 1/4" decking and thick EPS block foam insulation. Compare Dolphin's storage compartments to the industry standard rotocast plastic "tubs" that are cheaper, weaker and provide no insulation value.

GAS CHARGED STRUTS

Dual gas charged struts make loading and unloading gear a breeze. They lift the door for you, then hold it up out of your way.

FACTORY TOUR CONTINUED

CNC Precision

National RV has been at the forefront of implementing new technologies in RV manufacturing. An excellent example is the CNC router. This advanced machine uses a computer-numerically-controlled (CNC) router to precisely cut windows and other openings in the sidewalls. Routed-out pieces aren't wasted—they're further shaped into insulated, sound-deadening panels for our heated basement storage compartments.



It's Starting to Look Like a Motorhome

By the time the sidewall is set into place on a National RV motorhome, many man- and machine-hours as well as the best materials and methods have already contributed to creating the sturdiest and all around best-performing motorhome sidewalls available. National RV's unique method for attaching the sidewall places no shear forces on the fasteners. Rather, the weight of the sidewall rests upon a sturdy ledge of steel. Screws are used to hold the wall laterally to the edge of the coach floor, but do not bear the weight of the sidewall and roof assemblies.



WORKHORSE/DURAFRAME CHASSIS SYSTEM

A great home needs a solid foundation, and that's exactly what Dolphin's Workhorse W-Series chassis and National RV's Duraframe provide. Together they form the Duraframe Chassis System, the strongest platform around on which to build a fully equipped multiple slide-out luxury motorHOME.



WORKHORSE W-SERIES CHASSIS

At the heart of Dolphin is the awesome Workhorse W-Series chassis, integrated into the Duraframe Chassis System. The W-Series chassis blurs the lines between gas and diesel performance. With brawny 22,000 lb. and 24,000 lb. GVWRs (for the W-22 and W-24, respectively), these chassis permit the largest, most luxuriously equipped gasoline motorhomes ever.



GM Vortec 8100 engine

- 8.1L displacement
- 340 peak HP @ 4,200 RPM
- 455 lbs./ft. Peak torque @3,200 RPM

Allison transmission

- 1000 series on W-22 chassis
- 2100 MH on W-24 chassis
- 5-speed automatic with overdrive
- Touch pad electronic shifter on units built on W-24 chassis

Low-set engine allows a very short engine cover, resulting in a more open, diesel-like cockpit area.

A tall, diesel-like stance and high frame rails permit deep bus-style basement storage compartments.

22.5" wheels and tires fill up Dolphin's wheel wells for a formidable appearance

ALWAYS CHECK THE CARGO CARRYING CAPACITY

When shopping for a motorhome, be sure to check the coach's Cargo Carrying Capacity (CCC). This is the final calculation for the amount of cargo you may safely carry in the coach, which is the Gross Vehicle Weight Rating (GVWR) of the chassis, minus the weight of the coach, passengers, holding tanks, etc. Make sure the manufacturer has accurately figured the weights in the calculation, including the *number* of passengers. Careful inspection may reveal that many competing motorhomes leave very little room for Cargo Carrying Capacity, sometimes resulting in

CCC that is insufficient for your cargo carrying needs.

At National RV, we understand that bringing the comforts of home along with you is important to enjoying the RV lifestyle. That's why we've set minimum standards for sufficient Cargo Carrying Capacity in every 2005 motorhome we build. If the CCC is too low, we build the coach on a higher GVWR chassis to maintain this standard. That's why certain Dolphin motorhomes are built on the W-24 chassis. Though the cost of the W-24 is slightly higher, we believe it is well worth the price for the peace of mind of having enough CCC.

Check our competitors' CCC...see if it measures up to the *standard* of a Dolphin.

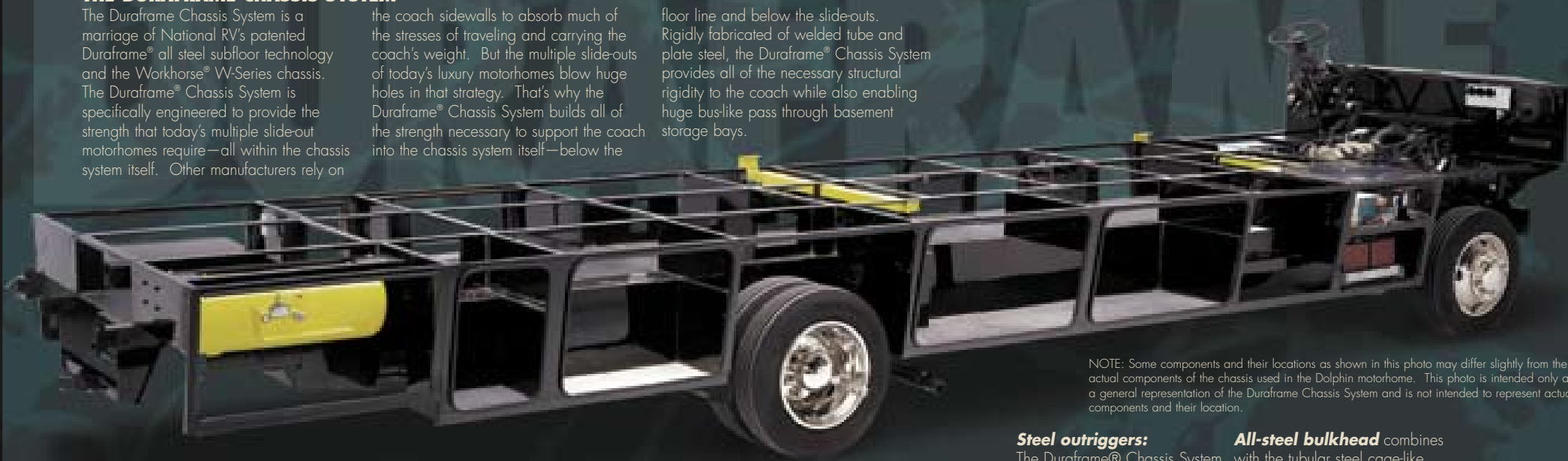


THE DURAFRAME CHASSIS SYSTEM

The Duraframe Chassis System is a marriage of National RV's patented Duraframe® all steel subfloor technology and the Workhorse® W-Series chassis. The Duraframe® Chassis System is specifically engineered to provide the strength that today's multiple slide-out motorhomes require—all within the chassis system itself. Other manufacturers rely on

the coach sidewalls to absorb much of the stresses of traveling and carrying the coach's weight. But the multiple slide-outs of today's luxury motorhomes blow huge holes in that strategy. That's why the Duraframe® Chassis System builds all of the strength necessary to support the coach into the chassis system itself—below the

floor line and below the slide-outs. Rigidly fabricated of welded tube and plate steel, the Duraframe® Chassis System provides all of the necessary structural rigidity to the coach while also enabling huge bus-like pass through basement storage bays.



5,000 lb. tow hitch:

Dolphin's Class III hitch is anchored directly to the all-steel Duraframe® Chassis System structure.

Rigid-mounted components

like the LPG tank, generator and other equipment are rigidly anchored in the cold hard steel of the Duraframe® Chassis System.

Tubular steel risers

made of thick-wall rectangular steel tubing lift the coach floor above the chassis rails to provide deep storage bays with pass-through versatility.

Flush-floor slide mechanism

technology provides residential livability. Precise rack and pinion slide mechanisms are attached directly to the Duraframe® for superior support.

Steel outriggers:

The Duraframe® Chassis System uses rigid sheet steel outriggers to provide uniform coach support from the center to the edges. Truss-like arrangement of outriggers and other steel members provides unmatched strength and rigidity to the overall motorhome.

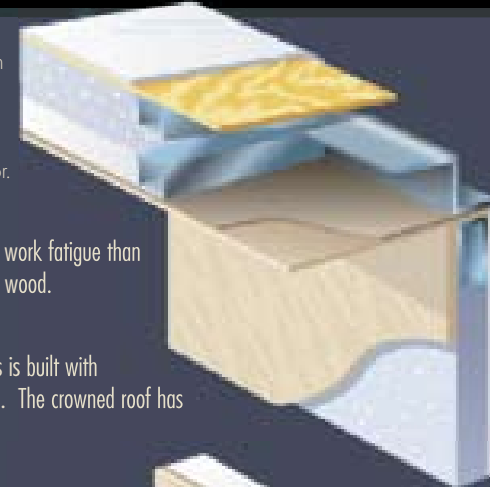
All-steel bulkhead

combines with the tubular steel cage-like frames of the sidewalls and roof to surround the driver and passenger by a safety barrier of cold hard steel.



SUPERIOR COACH BODY CONSTRUCTION

National RV uses an advanced vacuum lamination process and the highest quality materials in the construction of the fully insulated roof, walls and floor.



TUBULAR STEEL FRAME

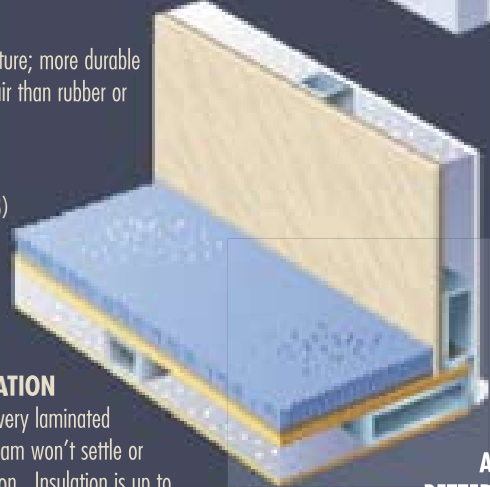
Stronger and less susceptible to work fatigue than aluminum and won't decay like wood.

CROWNED ROOF

The best RV roof in the business is built with arched tubular steel roof trusses. The crowned roof has radius edges for superior runoff.

FIBERGLASS ROOF SKIN

A seamless barrier against moisture; more durable and easier to maintain and repair than rubber or aluminum.



1/4" STRUCTURE-WOOD®

This oriented strand board (OSB) from Weyerhaeuser carries a 25 year warranty and is used for both the roof deck and interior ceiling panel.

EPS BLOCK FOAM INSULATION

Used throughout the coach in every laminated coach body component. This foam won't settle or sag like spun fiber-glass insulation. Insulation is up to 6" thick in the roof, and completely surrounds the coach living areas. It's even in the floor!

1/4" THICK MAHOGANY PLYWOOD INTERIOR WALL PANEL

A thick, firm interior wall surface that's tough enough to anchor our cabinetry...and whatever pictures or fixtures you care to hang, wherever you want to hang them. Competitors' thin interior wall surfaces "give" when you push them, revealing their weakness beneath the surface, with reinforcements built in only where necessary to attach cabinets. Our interior wall surfaces are 1/4" thick and rigid throughout!

HIGH GLOSS GELCOAT EXTERIOR

Exterior sidewall surface is made of a high gloss fiberglass gelcoat that is *molded into* a luan backing then vacuum laminated to the sidewall structure. The result is excellent resistance to delamination and long-lasting great looks.

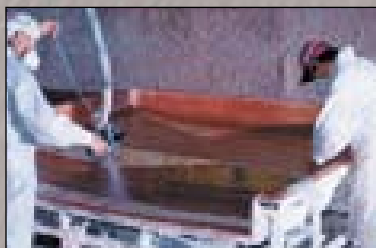
A BETTER WAY TO MOUNT A SIDEWALL

The National RV sidewall is placed *on top* of the steel floor framework. Some manufacturers use screws to fasten the sidewall horizontally to the edge of the floor. This places the fastening screws under an enormous amount of shear force, and the sidewall—and everything above it, such as the roof—is literally being held up by a few small screws! With the National RV method, the weight of the sidewall rests on the steel framework of the floor. Which would you prefer?

FACTORY TOUR CONTINUED

Hand Molded Fiberglass

Front and rear caps, compartment doors and one-piece showers are manufactured in National RV's state-of-the-art fiberglass production facilities. Pure unfilled resins and quality glass fiber are applied, with extra reinforcement applied in critical areas.



Whiter Whites

The gleaming high gloss gelcoat of the fiberglass components will become the beautiful exterior finish of the motorhome. Extra care is taken in the fiberglass finishing shop to buff each component to a mirror finish.



Cap Placement

Front and rear caps are fully loaded with grills, light fixtures and other components before being delivered to the assembly line. Skillful coordination of manufacturing processes are required to ensure a steady flow of components to the line from assembly areas throughout the plant. Once the caps are in place, the motorhome "shell" is complete—with the motorhome surrounded in brilliant, protective, stylishly molded fiberglass. Further up the line, windows and doors are installed as finish work continues on the coach interior and exterior.



BUYING A NATIONAL RV IS JUST THE BEGINNING

When you buy a Dolphin motorhome, you become a member of the National RV family.

Through a wide variety of after-the-sale service and support benefits to supporting our Owners Club and local club rallies and functions, National RV strives to foster a close, mutually beneficial relationship with the owners of our products.



Factory service centers
In addition to hundreds of trained service technicians at dealers throughout North America, National RV operates large Factory Service and Parts Distribution Centers in California and Florida. This ensures that the expertise and parts to fix any problem are readily available either at your local dealer or one of these centers.

Emergency roadside assistance

National RV provides a complimentary first year of coverage by Coach Net®, America's leading provider of 24-hour emergency roadside assistance. In addition to emergency towing, Coach Net® provides free trip planning, service scheduling assistance, travel maps, coverage for your towed vehicle and much more.



Backed as well as they're built

National RV stands behind its product with a fully staffed Owner Services department ready to assist you over the phone toll-free. National RV also boasts one of America's best RV warranties, including a **5 year/unlimited miles** structural warranty and one year/unlimited miles house warranty. Please see the warranty booklet for specific information.



Parts distribution centers

on both coasts ensure fast, accurate parts delivery no matter where you are in National RV's vast network of factory authorized service centers.

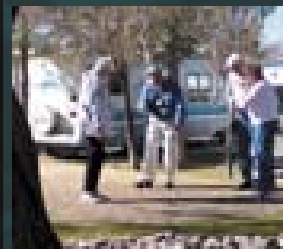


At National RV, we're fanatics for the RV lifestyle! We promote the RV lifestyle and camaraderie among our owners

through the National RV Owners Club and local chapters. Membership in the Club is complimentary with your purchase of a National RV.



Getaways are the highlight of National RV Owners Club membership. These well-organized events are a great opportunity to meet other RV enthusiasts. GetAways are held throughout the year at interesting locations across the United States. Quality entertainment, great food and fun activities are all part of every GetAway. You may also seek the assistance of National RV service technicians, tour the latest National RV products and hear the latest news from company officers.



Special edition Getaway T-shirts have become coveted mementos from every Getaway event.

The Islander newspaper is published for the benefit of all National RV owners. A subscription to the Islander is included with



National RV Owners Club membership, which is free for all owners of National RV products:

- Product Spotlights
- Tech Tips
- Events Schedules
- Company News
- GetAways
- Reader's Letters
- Interesting Destinations
- Photos and reports from past events
- Regional club info

Ask your dealer for a complimentary copy of The Islander!

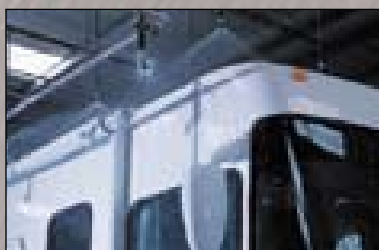
Regional Clubs

Many regional clubs cater to National RV owners in their local areas. National RV is committed to supporting these clubs through the Islander Newspaper, support for local rallies and events, and close cooperation through the GetAways and the National RV Owners Club. To find a National RV affiliated regional owners club near you, please visit the National RV website at www.nationalrv.com

FACTORY TOUR CONTINUED

Quality Assurance

Of course, no National RV hits the road without first undergoing a thorough battery of quality checks. In the rain test booth, every coach is subjected to a simulated rainstorm—with all of the slide-outs extended!



Ready for Delivery!

Finally, quality auditors test every component of the coach for proper operation. After a thorough cleaning, the interior fabrics—carpets, seats and furniture—are covered in protective plastic to ensure delivery of a clean, tidy motorhome.



Seeing is Believing

We invite you to come to the factory and see for yourself the quality workmanship that goes into every National RV. Here you can walk the assembly line and witness the process as raw steel, fiberglass and other components are skillfully crafted into a complete, finished motorhome.

Plant tours are conducted daily from the main entrance of our manufacturing facilities at 3411 N. Perris Boulevard in sunny Perris, California.



FEATURES AND SPECIFICATIONS

Dolphin

Dolphin
LX

■ = Standard Equipment ○ = Optional Equipment

EXTERIOR & COACH BODY CONSTRUCTION

- Duraframe® patented steel sub floor construction
- Steel framed laminated floor
- Steel framed crowned laminated fiberglass roof
- Steel framed laminated fiberglass high gloss walls
- Front and rear molded high gloss fiberglass caps and integrated bumper assembly
- Full panoramic tinted windshield
- Soft fabric ceiling material
- Electric slide-out room with overhead cabinets (flush floor on lounge slides only)
- Insulated fiberglass exterior storage compartment doors with integrated paddle latches and gas struts
- Steel framed exterior storage compartment with insulated bottoms
- Lighted storage and service compartments
- Exterior assist handle
- Full height interior assist handle
- Aluminum rear ladder
- Awning rail/rain gutter with drip spouts
- Automotive undercoating
- Steel insulated front bulkhead
- Custom vinyl exterior graphics with two available color schemes
- Custom combination paint and vinyl exterior graphics with two available color schemes

COCKPIT FEATURES

- Big button AM/FM cassette stereo and CD with four speakers
- Multi-disc CD changer
- Driver and passenger reading lights with switches
- Custom designed dash with full gauge package
- Convenience tray
- Audible turn signals
- Chrome electric horns
- Pantographic windshield wipers
- Power steering
- Cruise control
- Tilt steering wheel
- Oversized steering wheel with power steering
- Motorized rear vision system with built-in microphone
- Overhead dash fans (2 speed)

- Power heated double convex rear view mirrors
- Passenger work station with 12V/120V receptacle and phone jack in console
- Aviation style sun visors
- Electric sun visors
- Manual driver/passenger side sun shade
- 4-point hydraulic leveling jacks with dash mounted controls
- Generator hour meter and auxiliary start switch on dash
- Exterior temperature sensor
- Wrap around privacy curtain with easy reach wand

APPLIANCES & ACCESSORIES

- 8 cu. ft. double door refrigerator and pantry
- 10 cu. ft. double door refrigerator with ice maker and pantry
- 12 cu. ft. four door refrigerator with ice maker (no pantry)
N/A 5320 AND 6320
- High output three burner cooktop with drawers below with flush mount Corian® range cover
- High output three burner cooktop with range/oven and flush mount Corian® range cover
- GE® SpaceSaver convection microwave oven with carousel, built-in light and fan
- Cable TV hook-up and multiple phone jacks
- TV antenna
- RCA® 27" flat screen TV in living area
- RCA® 20" flat screen TV with front A/V jacks in bedroom
- 2-way radio with (4) handsets and built-in rechargeable flashlight
- Exterior entertainment package: Includes a 19" stereo TV, AM/FM stereo with CD on a swivel base located in an exterior compartment on a full-extension slide tray with two fixed speakers mounted by the exterior TV
- Home theater entertainment package: Includes an RCA® DVD digital receiver and speaker/subwoofer system
- RCA® DVD/VCR combo
- Video control box with antenna boost
- Pre-wired for the Kingdome® satellite dish
- KingDome® auto-stationary satellite dish
- Combination washer/dryer
N/A 5320, 5342, 6320 AND 6342

FURNITURE

- Kustom-Fit® vinyl 6-way power driver recliner seat with swivel base
- Kustom-Fit® vinyl passenger recliner seat with swivel base
- Kustom-Fit® soft touch OptimaLeather® cockpit seating package: Includes a soft touch OptimaLeather® 6-way power driver seat with swivel base and a soft touch OptimaLeather® manual passenger seat with swivel base

- Kustom-Fit® Wonder-Bed® fabric sleeper sofa with slide-in armrests
- Kustom-Fit® Wonder-Bed® soft touch OptimaLeather® sleeper sofa with slide-in armrests
- Kustom-Fit® freestanding vinyl swivel recliner chair with footrest
- Kustom-Fit® freestanding soft touch OptimaLeather® swivel recliner chair with footrest
- Kustom-Fit® freestanding fabric bedroom lounge chairs with ottoman
5376 AND 6376 ONLY

INTERIORS

- Throughout Coach
 - Maple paneling and doors
 - Cherry paneling and doors
 - Walnut paneling and doors
- Telestrut hardware on overhead doors and positive catches on others
- Drawers with ball bearing roller guides
- Cockpit
 - Floor mats
- Living Area
 - Booth dinette with slide-out storage drawers
 - Dining cabinet/table with built-in table extension, two high-back wooden chairs and two wooden folding chairs
N/A 5320 AND 6320
 - Plush carpet with deluxe pad
 - Day/night shades with designer valances
 - Hutch and overhead with beveled mirror
5355 AND 6355
 - Solid raised panel cabinet doors
- Kitchen Area
 - Slide-out pantry (not available with 12 cu. ft. refrigerator option)
 - Corian® kitchen countertop with Corian® flush mount stove cover
 - Corian® countertop extension
N/A 5375 AND 6375
 - Beveled mirror above galley backsplash
 - Large stainless steel sink with wood cutting block sink covers
 - Large stainless steel kitchen sink with Corian® sink covers
 - Wastebasket
 - Designer vinyl flooring
 - Ceramic tile flooring with inlaid tile accents
 - Venetian mini-blind with valance
 - Rubbermaid® silverware organizer tray
- Bath Area
 - Designer vinyl flooring
 - Ceramic tile flooring with inlaid tile accent
 - Decorative glass shower door
 - Laminate lavatory top with decorative edge
 - Corian® lavatory top
 - Medicine cabinet
- Linen cabinet with four drawers (washer/dryer prep)
5355, 6355, 5375 AND 6375
- Bedroom Area
 - Plush carpet with deluxe pad
 - Day/night shades with designer valances

- Cedar lining in wardrobe and bed storage compartment
- Mirrored wardrobe with drawers and hamper below
- Bedspread, pillow and shams
- Wall dresser with drawers and hamper
5342 AND 6342
- Slide-out queen bed with storage compartment
5375, 6375, 5376 AND 6376
- Slide-out queen bed with pull out drawers and storage compartment
5320, 6320, 5342, 6342, 5355 AND 6355
- "Sandpiper Deluxe" residential-style pillow top mattress (60"x80")

ELECTRICAL SYSTEM & LIGHTING

- 50 Amp 120V distribution panel
- 50 Amp shore power cord with user-friendly exterior wall receptacle
- 12V re-settable push button house circuit breaker distribution panel
- 7.0 kW Onan® Marquis series generator
- 1,000 watt inverter/converter
- 2,000 watt inverter/converter with remote on/off switch and four 6V deep cycle house batteries
- (2) 6V deep cycle house batteries
- (1) 12V chassis battery
- Systems monitor panel
- Battery disconnect switch for house batteries
- Porch light with interior switch
- 120V patio receptacle and phone jack
- Recessed fluorescent lights in ceiling with wall mounted switches
- Designer light fixtures in living and bedroom areas
- Cosmetic light in bathroom
- Three water pump switches (kitchen, bath and service compartment)
- 10 watt solar panel (mounted on roof)
- Battery voltage meter in monitor panel
- GFI protected electrical circuit
- Courtesy light at entry-door switch panel

PLUMBING & LPG SYSTEMS

- Coach Exterior
 - Heated systems compartment with easy access to hook-ups
 - 'On demand' water system and pump
 - Holding tank rinse system (black tank only)
 - Winterization antifreeze inlet to pump
 - Outside shower
 - Water heater bypass valve
 - Pressurized water fill with integrated regulator
 - 10 gallon, quick-recovery water heater with direct spark ignition (gas/electric)
- Kitchen Area
 - Water filter
 - Single lever faucet with side sprayer
- Bathroom Area
 - One-piece fiberglass angled shower with seat
 - Residential single lever shower faucet

- Porcelain toilet with sprayer
 - Single lever lavatory faucet
- ## SAFETY FEATURES
- Daytime running lights
 - Driver and passenger three point seatbelts
 - Deadbolt lock on entry door
 - Fire extinguisher
 - Smoke, carbon monoxide (CO) and LPG detectors
 - Emergency exit window

WINDOWS, DOORS & AWNINGS

- Dual pane radius tinted safety glass windows
- Patio awning with metal cover* (electric awning with triple slide units)
- Living room and bedroom window awning package
- Bedroom rear picture window
- Radius entrance door with clear glass, shade and screen door
- Power triple entrance step with light and anti-skid surface
- Ventilated windows on sides of slide-out rooms (lounge slides only)
- Slide-out topper awnings
- Toilet room with window
- Tinted skylight in bathroom

CLIMATE CONTROL SYSTEMS

- Coleman® 2-Ton high efficiency basement mounted air conditioner and heat pump with ceiling ducting
- 35,000 BTU electronic ignition furnace
N/A 5375, 6375, 5376 AND 6375
- Dual 35,000/20,000 BTU electronic ignition furnaces
5375, 6375, 5376 AND 6376 ONLY

WEIGHT RATINGS (LBS.)	5320	6320	5342	6342	5355	6355	5375	6375	5376	6376
Gross vehicle weight rating	22,000	22,000	22,000	22,000	22,000	24,000	24,000	24,000	24,000	24,000
Gross combined weight rating	26,000	26,000	26,000	26,000	26,000	30,000	30,000	30,000	30,000	30,000
Front gross axle weight rating	8,000	8,000	8,000	8,000	8,000	9,000	9,000	9,000	9,000	9,000
Rear gross axle weight rating	15,000	15,000	15,000	15,000	15,000	15,500	15,500	15,500	15,500	15,500
Unloaded weight rating	18,600	18,910	19,220	19,400	19,470	19,870	TBD	20,840	TBD	TBD
Maximum carrying capacity	3,400	3,090	2,780	2,600	2,530	4,130	TBD	3,160	TBD	TBD
Cargo carrying capacity	1,956	1,646	1,336	1,156	1,086	2,686	TBD	1,782	TBD	TBD

MEASUREMENTS	5320	6320	5342	6342	5355	6355	5375	6375	5376	6376
Wheelbase	208"	208"	228"	228"	228"	228"	242"	242"	242"	242"
Overall length	33' 9"	33' 9"	34' 9"	34' 9"	36' 0"	36' 0"	37' 2"	37' 2"	37' 2"	37' 2"
Overall height	11' 10"	11' 10"	11' 10"	11' 10"	11' 10"	11' 10"	11' 10"	11' 10"	11' 10"	11' 10"
Overall height with satellite	12' 6"	12' 6"	12' 6"	12' 6"	12' 6"	12' 6"	12' 6"	12' 6"	12' 6"	12' 6"
Interior height	79½"	79½"	79½"	79½"	79½"	79½"	79½"	79½"	79½"	79½"
Interior width	98½"	98½"	98½"	98½"	98½"	98½"	98½"	98½"	98½"	98½"
Exterior width	102"	102"	102"	102"	102"	102"	102"	102"	102"	102"

TANK CAPACITIES (GAL.)	5320	6320	5342	6342	5355	6355	5375	6375	5376	6376
Water heater capacity	10	10	10	10	10	10	10	10	10	10
Fresh water capacity (incl. w.h.)	90	90	90	90	90	90	82	82	82	82
Gray tank capacity	45	45	60	60	60	60	60	60	60	60
Black tank capacity	45	45	47	47	47	47	42	42	42	42
LP-Gas (volume w.c.)	24.2	24.2	24.2	24.2	24.2	24.2	24.2	24.2	24.2	24.2

- Ducted heating system
- 12V Fan-Tastic® Vent with wall thermostat and rain sensor
- 12V roof exhaust fan in bathroom
- Non-powered roof vent in bedroom
- Dash automotive heating and air conditioner system with defroster

WORKHORSE® W-SERIES CHASSIS SPECIFICATIONS

- W-22 (22,000 lb. GVWR)
 - MODELS 5320, 6320, 5342, 6342 AND 5355
- W-24 (24,000 lb. GVWR)
 - MODELS 6355, 5375, 6375, 5376 AND 6376
- Michelin® XRV 235/80 R22.5 tires
- 22.5" steel wheels with stainless steel liners
- 4-wheel disc brakes with hydro-boost and ABS
- 5.38:1 drive axle ratio
- 75 gallon fuel capacity
- 5,000 lb. Class III hitch
- 145 amp alternator
- 3 years/36,000 miles warranty

GM® VORTEC 8100 ENGINE SPECIFICATIONS

- 8.1 liter displacement
- 340 HP @ 4,200 RPM peak horsepower
- 455 lb./ft. @ 3,200 RPM peak torque
- 3 years/36,000 miles warranty

ALLISON® TRANSMISSION SPECIFICATIONS

- 1000 Series featured on W-22 chassis
- 2100MH Series featured on W-24 chassis
- 5 speed automatic with overdrive
- Touch pad electronic shifter on W-24 chassis
- 3 years/36,000 miles warranty

EXTERIOR & INTERIOR COLOR CHOICES

EXTERIOR GRAPHICS

DOLPHIN



Newport



Paradise

DOLPHIN LX



Adobe



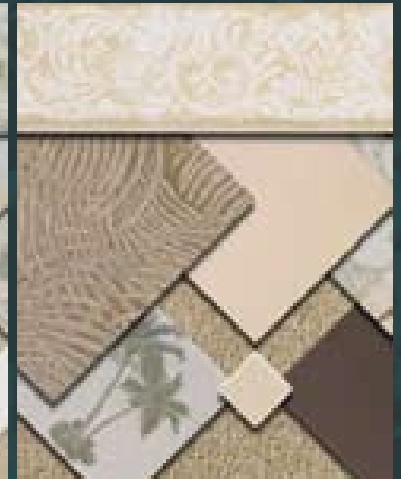
Satin Nickel



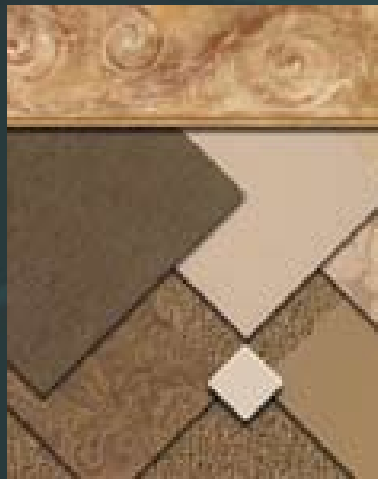
INTERIOR DECORS



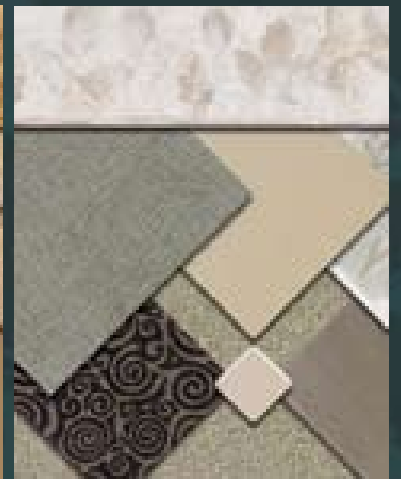
Newport



Paradise



Adobe



Satin Nickel

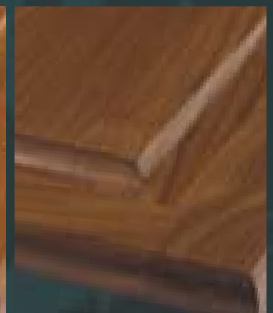
INTERIOR WOOD FINISHES



Maple (standard)



Cherry (optional)



Walnut (optional on Dolphin LX only)

NATIONAL R.V., INC.

3411 N. Perris Boulevard
Perris, California 92571
(800) 322-6007 • Fax (951) 943-8498

www.nationalrv.com

YOUR AUTHORIZED DOLPHIN DEALER IS:

For more of everything
National RV Inc. related
join us at NRVCLUB.com



National RV Club (NRVC) is not affiliated with any other club or organization.
NRVC has no relationship with the defunct National R.V. Inc. or National R.V. Holdings.
NRVC has no relationship with REV Group, REV Recreation Group, or their motor home brands.