

Tradewinds

Fabrics



MARDI GRAS



TIFFANY



PACIFIC

Woods



OAK



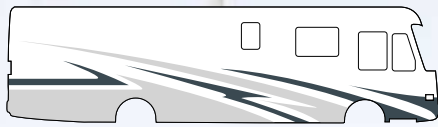
WALNUT

Painted Graphics

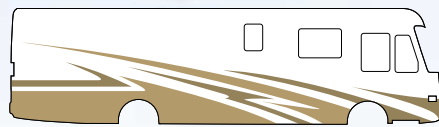


SHOWN IN TABAGO BROWN

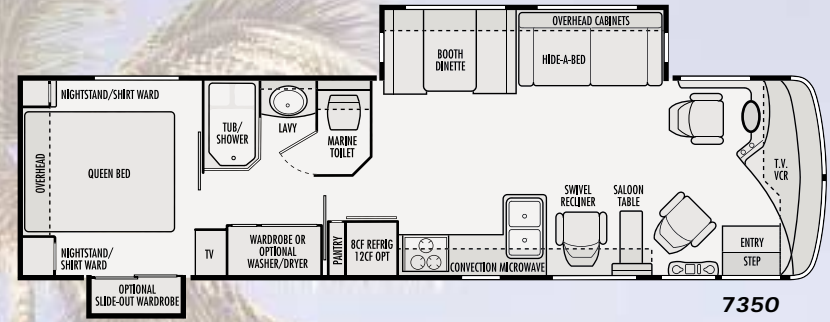
ALSO AVAILABLE:



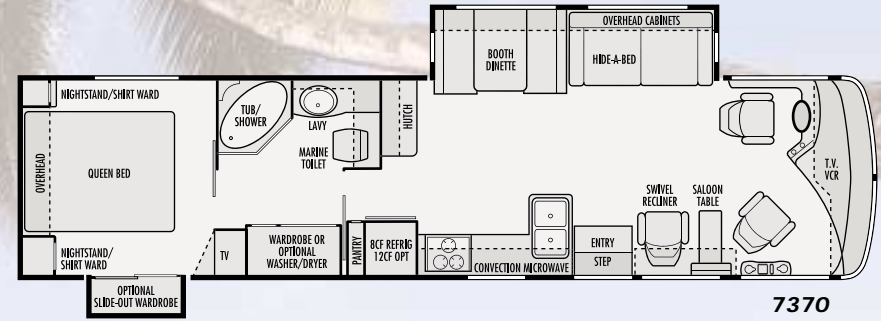
OAHU BLUE



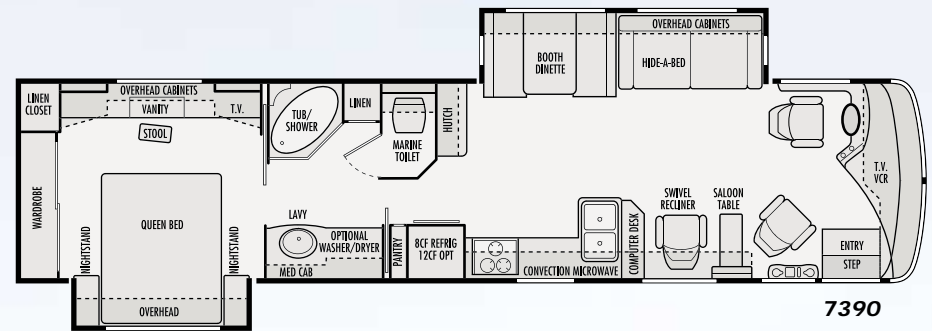
CAICOS GOLD



7350



7370



7390



TRADEWINDS FEATURES & SPECIFICATIONS

CHASSIS SPECIFICATIONS

Freightliner® XC Series Raised Rail Chassis
 TRW TAS 65 Integral hydraulic power steering gear, 12,000 lb. rating with 50° turning angle and 20.4:1 steering ratio
 Michelin® XRV radial tires 255/80R22.5 (G) on six 10 lug steel wheels with stainless steel wheel simulators
 Service Brakes: Full air brakes (drums) with ABS automatic heated air tank moisture ejectors, 15 x 4 front drums; 16.5 x 7 rear drums, S-cam style, automatic slack adjusters
 Parking Brakes: Spring applied, air release on rear drum brakes; push-pull lever control; automatic park brake
 Leece-Neville® 160 Amp alternator
 Two Alliance MF1031 1,500 CCA maintenance free chassis batteries
 Meritor® FD 965 I-beam wide track Front Axle 10,500 capacity with anti sway bar
 Neway® front air suspension and Neway® AD-200 17,500 lb capacity rear air suspension and manual electric air dump
 Tuned Bilstein® shock absorbers
 Dana Spicer® 1710 Series driveline
 Meritor® RS-17-145 driveline with 4.63:1 drive ratio
 90 gallon fuel tank dual fuel fill with remote mounted fuel/water separator
 Cooling Package: Rear mounted charge air cooler, radiator with belt driven cooling fan
 Remote mounted transmission oil cooler (water to oil)
 Filter Minder® air intake restriction indicator
 5,000 lb. Class III hitch receiver with skid bar and six pin electrical connector
 3 years/50,000 miles chassis warranty
 Caterpillar® 3126E, 300 HP @ 2,200 RPM and 860 lb. ft. torque @ 1,440 RPM with PacBrake exhaust brake, and 115V 1000 Watt block heater
 Allison® MH 3000, 6 speed electronic automatic transmission with digital display key pad shifter

BODY CONSTRUCTION

Duraframe® patented steel sub floor construction
 Steel framed laminated floor
 Steel framed crowned laminated roof
 Steel framed laminated fiberglass high gloss walls
 Front and rear molded fiberglass caps
 Integrated front and rear bumpers
 Insulated fiberglass exterior storage
 Compartment doors with integrated latches and gas struts

Electric slide-out room
 Aluminum rear ladder
 Automotive undercoating
 Custom vinyl exterior graphics

COCKPIT FEATURES

AM/FM stereo cassette and CD with four speakers
 Driver and passenger map lights
 Power steering
 Electronic cruise control
 Tilt and telescopic steering wheel
 12V/120V receptacle and telephone jack in console
 Rosen aviation style sun visors
 Snack tray cabinet with cup holders
 Dual dash fans (2 speed)
 Driver and extra wide passenger recliner seats with swivel bases
 Rear vision system with microphone
 Roof mounted dual trumpet air horns
 Power controlled heated exterior mirrors
 Pantographic windshield wipers
 4-point manual hydraulic leveling jacks
 Passenger work station

APPLIANCES & ACCESSORIES

8 cu. ft. double door refrigerator
 High output three-burner cook top
 Bi-fold range cover with Corian® top
 GE® Spacemaker® convection microwave with touch control and range hood
 TV antenna and booster with 12V receptacle and TV jack(s)
 Dust Buster® vacuum
 19" color TV with remote control in living area
 VCR with video switch box
 Coffee maker
 Wall mounted hair dryer in bath
 13" color TV with remote control in bedroom
 Systems monitor panel
 CB antenna and cable
 Home theater sound system

INTERIORS

Throughout Coach

Soft fabric ceiling material
 Praxis oak paneling and doors
 Solid wood square raised panel cabinet doors
 Deluxe cabinetry with hardwood overhead end panels and solid hardwood face framing
 Telestrut overhead storage doors and positive catches on all other doors
 Ball bearing rolling drawer guides

Living Area

Deluxe nylon carpet and pad

Pleated day/night shades
 Valances and lambrequins
 68" Hide-A-Bed® sofa
 Swivel rocker recliner
 Magazine rack
 Booth dinette with slide-out storage drawers
 Designer hutch shelf with Corian® and beveled "V" grooved mirrors
 Computer workstation with Corian® top (7390)

Kitchen Area

Corian® kitchen countertop with wood cutting block sink cover
 Corian® countertop extension
 Slideout pantry
 Waste basket
 Silverware organizer
 Mirrored galley back splash with "V" grooves
 Ceramic tile floor
 Venetian blind and valance (7370)

Bath Area

Ceramic tile floor
 Corian® bathroom lavy top
 Bathroom mirror with 1" bevel and frame
 Porcelain oval lavy sink
 Raised panel doors
 Insulated skylight in shower
 Towel bars
 Medicine cabinet

Bedroom Area

Deluxe nylon carpet and pad
 Pleated day/night shades
 Valances and lambrequins with Corian® tops
 Raised panel doors
 Queen bed slide-out (7390)
 Queen bed with wardrobe slide (7350 and 7370)
 Rear wardrobe with mirrored sliding doors (7390)
 Color coordinated bedspread, pillows and shams
 Radius padded headboard
 Nightstands with Corian® tops
 Cedar lining in wardrobe

ELECTRICAL SYSTEMS & LIGHTS

50 Amp 120V distribution panel and cord
 50 Amp shore power cord
 Dual 21 watt solar panel
 Generac® 6.6 kW LPG generator
 2,000 watt inverter/converter with remote on/off switch
 Four 6V deep cycle house batteries
 Two 760 CCA 12V maintenance-free chassis batteries
 Battery disconnect switch
 Three water pump switches (kitchen, bath and service station)

Auxiliary driving lights
 Porch light
 Patio receptacle
 Entry step light
 Fog lights
 Storage compartment lights
 Decorative overhead dining light
 Cosmetic light in bathroom (3-light with curved lens)
 Decorative lights in living area
 Fluorescent lights in ceiling
 Decorative scones in bedroom
 Decorative mood lights

PLUMBING & LPG SYSTEMS

Exterior of Coach

Heated and insulated holding and water tanks
 Manual dump valves
 Demand water system and Shur-Flo® water pump
 Water heater by-pass valve
 Winterization antifreeze inlet to pump
 Holding tank rinsing system (black tank only)
 Outside shower

Kitchen Area

Water filter in kitchen
 Six gallon gas/electric water heater
 Decorative faucets

Bath Area

Porcelain toilet with sprayer
 Clear glass shower enclosure with etched decorative design for privacy
 Decorative faucets
 Pre-plumbed for washer/dryer

SAFETY FEATURES

Fire extinguisher
 Deadbolt lock on entrance door
 12V GFI protected circuits (kitchen, bath and exterior)
 Smoke, carbon monoxide (CO) and LPG detectors
 Driver and passenger three point lap and shoulder seatbelts
 Egress windows
 Deluxe acrylic exterior assist handle
 3rd brake safety light
 Extra large rear view mirror with double convex

WINDOWS, DOORS & AWNINGS

Radius dual pane windows with tinted safety glass
 Sliding windows in living area, kitchen and driving area
 Power double entrance step with light and anti-skid

Radius entrance door with clear glass, roller shade (7370)
 PTL entrance door with clear glass and roller shade (7350 and 7390)
 Tinted dual pane windows
 Power step well cover (7390)
 Screen door
 Tinted skylight in bathroom
 Patio awning with metal cover*
 Slide-out awnings*

HEATING, VENTS & AIR CONDITIONING

Dual 13,500 BTU Duo-Therm® low profile Penguin® air conditioners with in-ceiling ducting
 35,000 BTU and 20,000 BTU furnaces (7370 and 7390)
 35,000 BTU furnace (7350)
 Dash heating and A/C system with defroster
 12V Fan-Tastic® Vent with wall thermostat and rain sensor in living area
 12V fan in bath

OPTIONAL FEATURES

Coach Exterior

Four aluminum wheels
 Electric patio awning*
 Generac® QuietPact 7.5 kW diesel generator
 Onan® 7.5 kW diesel generator
 Slide-out window awning*
 Bedroom window awning(s)*
 Front entry door awning (7350 and 7390)*

Throughout Coach

Walnut paneling and doors
 Maple paneling and doors

Living Area

Digital satellite system
 Ten disc CD player
 Leather package: Leather six-way power driver seat, leather extra wide passenger seat, leather sofa and leather recliner
 Leather six-way power driver seat
 Leather extra wide passenger seat
 Leather sofa
 Leather recliner
 Dining table with two high-back wooden chairs and two folding chairs
 Two wooden dining chairs
 JVC® DVD player

Kitchen Area

8 cu. ft. refer with ice maker
 12 cu. ft. side-by-side double door refer with absorption icemaker
 U-line ice maker
 21" high output three burner range and oven

Bath Area

Combination washer/dryer
 Electric toilet

Bedroom Area

Bedroom AM/FM cassette stereo with clock radio

WEIGHTS (POUNDS)	7350	7370	7390
Gross Vehicle Weight Rating	26,850 lbs.	26,850 lbs.	26,850 lbs.
Gross Combined Weight Rating	31,850 lbs.	31,850 lbs.	31,850 lbs.
Front Gross Axle Weight Rating	9,350 lbs.	9,350 lbs.	9,350 lbs.
Rear Gross Axle Weight Rating	17,500 lbs.	17,500 lbs.	17,500 lbs.
Unloaded Vehicle Weight	21,800 lbs.	TBD	22,780 lbs.
Maximum Carrying Capacity	5,050 lbs.	TBD	4,070 lbs.
Cargo Carrying Capacity	3,314 lbs.	TBD	2,334 lbs.
MEASUREMENTS	7350	7370	7390
Overall Length	34' 10"	36' 8"	38' 6"
Overall Height (Road Height)	12' 1/2"	12' 1/2"	12' 1/2"
Interior Height	79 1/2"	79 1/2"	79 1/2"
Interior Width	98"	98"	98"
Exterior Width	102"	102"	102"
Wheelbase	208"	228"	252"
TANK CAPACITIES	7350	7370	7390
Water Heater	6 gal.	6 gal.	6 gal.
Gray Tank	40 gal.	40 gal.	40 gal.
Black Tank	45 gal.	45 gal.	45 gal.
Fresh Water Tank(s)	95 gal.	95 gal.	95 gal.
LPG Tank (Volume W.C.)	69 gal.	69 gal.	69 gal.

*Not available on CSA units

Tradewinds LTC

Fabrics



MARDI GRAS



TIFFANY



PACIFIC

Woods



OAK



WALNUT



MAPLE

Full Body Painted Graphics

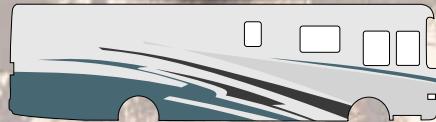


SHOWN IN TINIAN BROWN

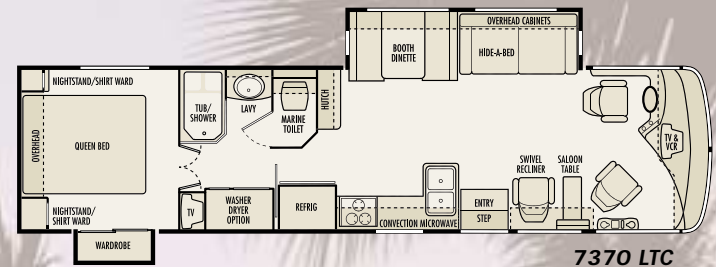
ALSO AVAILABLE:



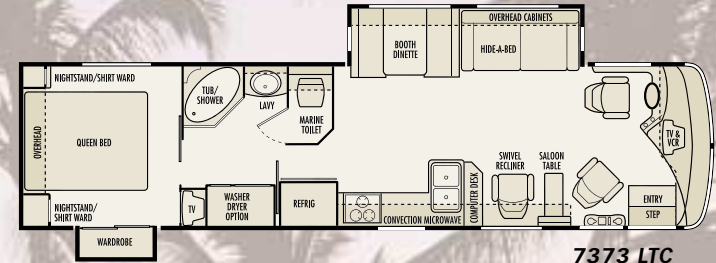
ANTIGUA GOLD



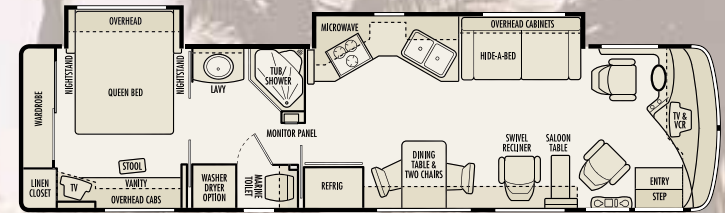
TORTOLA BLUE



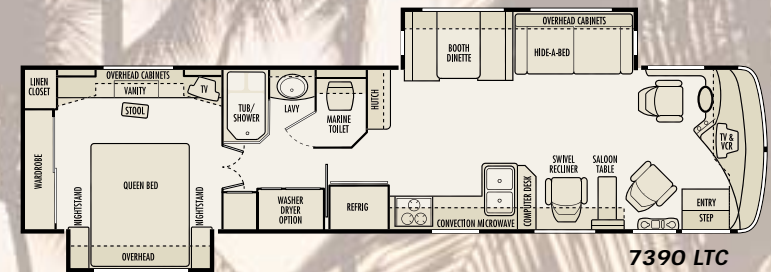
7370 LTC



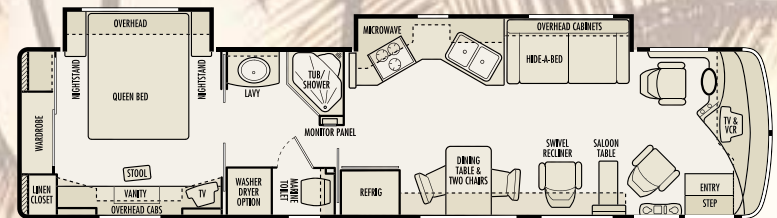
7373 LTC



7374 LTC



7390 LTC



7391 LTC



Due to continued product improvement, National R. V., Inc. reserves the right to change materials, colors, specifications and prices at any time without notification. Copyright © 2001 by National R. V., Inc. 12/01

TRADEWINDS LTC FEATURES & SPECIFICATIONS

CHASSIS SPECIFICATIONS

Freightliner® XC Series Raised Rail Chassis
TRW TAS 65 Integral hydraulic power steering gear, 12,000 lb. rating with 50° turning angle and 20.4:1 steering ratio
Michelin® XRV radial tires 255/80R22.5 (G) on four polished 10 lug aluminum wheels and two steel inside duals
Service Brakes: Full air brakes (drums) with ABS; automatic heated air tank moisture ejectors; 15 x 4 front drums; 16.5 x 7 rear drums, S-cam style, automatic slack adjusters
Parking Brake: Spring applied, air release on rear drum brakes; push-pull lever control; automatic park brake
Leece-Neville® 160 Amp alternator
Two Alliance MF1031 1,500 CCA maintenance free chassis batteries
Neway® independent front air suspension and Neway® AD-200 20,000 lb capacity rear air suspension and manual electric air dump
Tuned Bilstein® shock absorbers
Dana Spicer® 1710 Series driveline
Meritor® RS-19-145 drive axle with 4.88:1 drive ratio
100 gallon fuel tank dual fuel fill with remote mounted fuel/water separator
Cooling Package: Side mounted charge air cooler, radiator, and A/C condenser with variable speed hydraulic cooling fan
Remote mounted transmission oil cooler (water to oil)
Filter Minder® air intake restriction indicator
5,000 lb. Class III hitch receiver with skid bar and six pin electrical connector
3 years/50,000 miles chassis warranty
Cummins® ISC 8.3 liter, 350 HP @ 2,000 RPM and 1,050 lb. ft. torque @ 1,400 RPM
PacBrake exhaust brake
Allison® MH 3000, 6 speed automatic transmission with key pad electronic shifter with digital display

BODY CONSTRUCTION

Duraframe® steel sub floor assembly
Laminated steel frame floor
Laminated steel frame crowned fiberglass roof
Laminated steel frame smooth gel coat fiberglass exterior walls (high gloss)
Custom painted full body exterior graphics with choice of three color packages
Molded high gloss full fiberglass caps front and rear with integrated bumpers
Soft touch interior ceiling material
Electric slide-out rooms

Fiberglass exterior storage compartment doors, insulated with integrated paddle latches and struts
Aluminum rear ladder
Automotive undercoating as required
Steel insulated front bulkhead

COCKPIT FEATURES

JVC® AM/FM stereo CD with six speakers
JVC® 12 disc CD changer
Monogrammed UltraLeather™ driver recliner seat with base
Monogrammed UltraLeather™ extra-wide passenger recliner seat with swivel base
Driver and passenger map light with dash switch
Custom dash with full gauge package
Cockpit heater and air conditioner with dash controls
Convenience tray
Auxiliary driving lights
Pantographic windshield wipers
Power steering and electronic cruise control
18" tilt and telescopic steering wheel
Roof mounted dual chrome trumpet air horns
Rear vision system with microphone
Power controlled heated exterior mirrors
Four-point manual hydraulic leveling jacks
Passenger workstation with 12V receptacle, phone jack and 110V receptacle
Aviation style sun visors
Cup holders
Two 2-speed dash fans
Electric stepwell cover
CB radio and antenna
Wraparound privacy curtain with easy reach wand

APPLIANCES & ACCESSORIES

JVC® 20" color TV with remote in living area
JVC® VCR with switch box
Home theater sound module
JVC® 13" color TV with remote in bedroom (7370 and 7373)
12 cu. ft. side-by-side double door refrigerator and icemaker
Dust Buster® vacuum
High output three burner cook top
Hair dryer with night light
Bi-fold range cover with Corian® surface
GE® Spacemaker® convection microwave with turntable
Systems monitor panel
Cable TV hook-up and telephone jacks
Bedroom AM/FM CD stereo with clock
Digital satellite dish with TV antenna
Security alarm system with remote control

INTERIORS

Throughout Coach

Oak paneling and doors
Solid wood raised panel cabinet doors and face framing
Deluxe overhead storage doors with telescopic hardware; positive catches on all other doors
Ball bearing rolling drawer guides

Living Area

Deluxe plush nylon carpet and pad
Pleated day/night shades
Valances and lambrequins
74" Wonder-Bed® sleeper sofa (7374 and 7391)
68" Hide-a-bed sofa (7370, 7373 and 7390)
Swivel recliner chair with footrest
Magazine rack
Booth dinette with slide-out storage drawers
Designer hutch shelf with Corian® surface and beveled mirror backsplash (7370 and 7390)

Kitchen Area

Corian® kitchen counter top with wood cutting block sink cover
Corian® surface countertop extension (lounge slides only)
Kitchen waste basket
Silverware organizer (7374 and 7391)
Beveled mirror galley backsplash
Ceramic tile floor
Venetian blind and valance

Bath Area

Ceramic tile floor
Corian® surface bathroom lavatory top
Porcelain oval lavatory sink
Raised panel doors
Insulated skylight in shower
Towel bars
Medicine cabinet

Bedroom Area

Nylon carpet and pad
Pleated day/night shades
Valances and lambrequins
Raised panel doors
Queen bed with curbside wardrobe slide-out (7370 and 7373)
Queen bed slide-out (7374, 7390 and 7391)
Coordinate bedspread, pillows and shams
Radius padded headboard
Nightstands with Corian® tops
Cedar lining in wardrobe
Rear wardrobe with mirrored sliding doors (7390)
Wardrobe slide-out with mirrored sliding doors (7370 and 7373)

ELECTRICAL SYSTEMS & LIGHTS

50 Amp 120V distribution panel and cord
50 Amp shore power cord
Dual 21 watt solar panels

Generac® Quietpact 7.5 kW diesel generator
2,000 watt inverter/converter with remote on/off switch
Four 6V deep cycle house batteries
Two 760 CCA 12V maintenance-free chassis batteries
Battery disconnect switch
Porch light
Patio receptacle
Entry step light
Three water pump switches (kitchen, bath and service station)
Decorative overhead dining light
Cosmetic light in bathroom
Decorative lights in living area
Fluorescent lights in ceiling
Decorative mood lights

PLUMBING & LPG SYSTEMS

Coach Exterior

Heated and insulated holding and water tanks
Manual dump valves
Pressurized water fill with regulator
Demand water system with Shur-Flo® water pump
Water heater by-pass valve
Winterization antifreeze inlet to pump
Holding tank rinsing system (waste only)
Outside shower

Kitchen Area

Water filter in kitchen
10 gallon gas/electric water heater
Decorative faucets

Bath Area

Porcelain toilet with sprayer

Clear glass shower enclosure with etched decorative design for privacy
One piece fiberglass tub and shower
Decorative faucets
Pre-plumbed for washer/dryer

SAFETY FEATURES

Fire extinguisher
Deadbolt lock on entrance door
12V GFI protected circuits (kitchen, bath and exterior)
Smoke, carbon monoxide (CO) and LPG detectors
Driver and passenger three point lap and shoulder seatbelts
Egress windows
Deluxe acrylic exterior assist handle

WINDOWS, DOORS & AWNINGS

Tinted dual pane windows
Power double entrance step with light and anti-skid
PTL entrance door with clear glass and roller shade (7373 and 7390)
Radius entrance door with clear glass and roller shade (7370)
Screen door
Tinted skylight in bathroom
Electric patio awning with metal cover*
Slide-out topper awnings on living room, galley slide and bedroom slide*
Front entry door awning (7373 and 7390)*

HEATING, VENTS & AIR CONDITIONING

35,000 BTU and 20,000 BTU furnaces

Dual 13,500 BTU Duo-Therm® low profile Penguin® air conditioners with in-ceiling ducting
12V Fan-Tastic® Vent in bathroom
12V Fan-Tastic® Vent with wall thermostat and rain sensor in living area

OPTIONAL FEATURES

Coach Exterior

Window awnings*
Bedroom window awning(s)*
Onan® QD 7.5 kW diesel generator

Throughout Coach

Walnut paneling and doors
Maple paneling and doors

Cockpit Area

Monogrammed UltraLeather™ six-way power passenger seat (Note: not available as extra-wide)

Living Area

UltraLeather™ Package: Recliner and sofa
UltraLeather™ recliner
UltraLeather™ sofa
Two non-folding high-back wooden dining chairs
Dining table with two high-back wooden chairs and two folding chairs
JVC® DVD player (delete VCR)

Kitchen Area

21" high output three burner range and oven

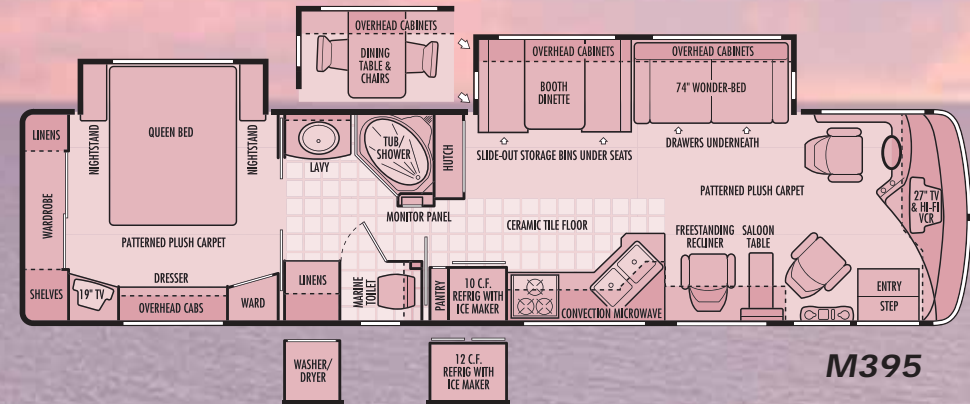
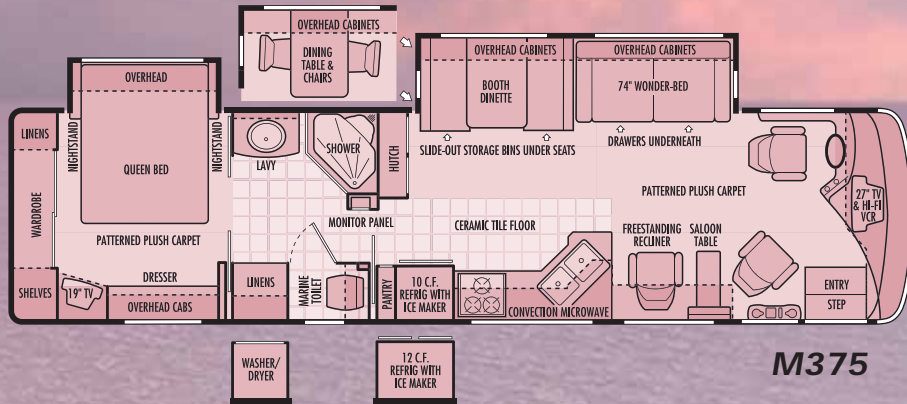
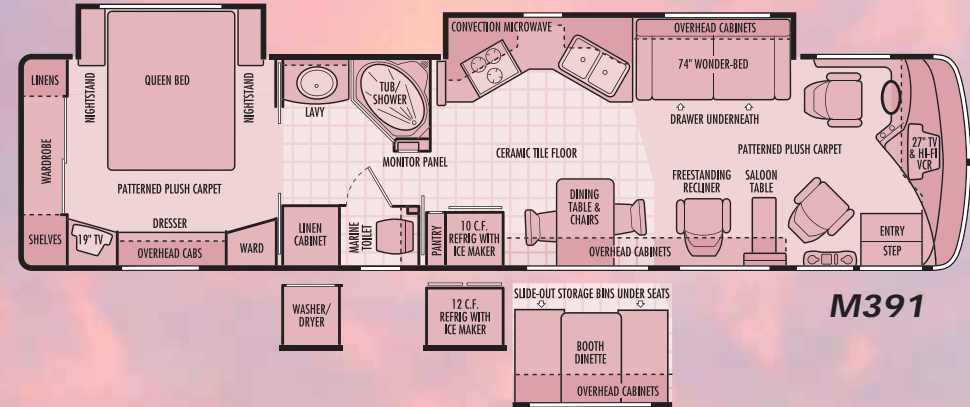
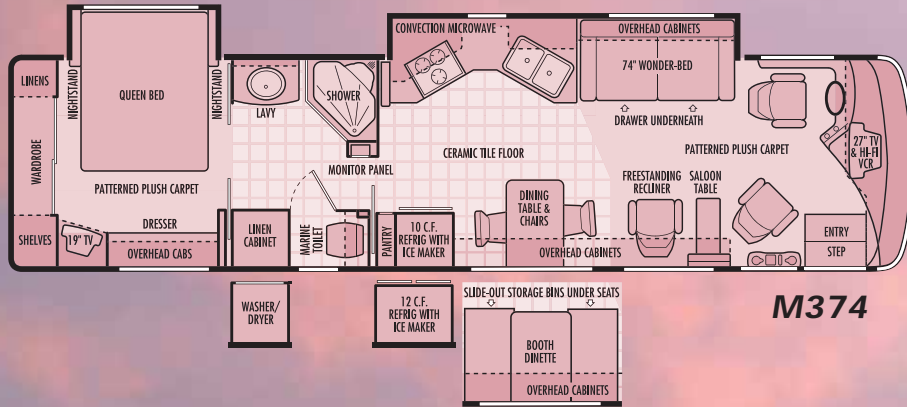
Bedroom/Bathroom Area

Combination washer/dryer
Electric toilet

WEIGHTS (POUNDS)	7370	7373	7374	7390	7391
Gross Vehicle Weight Rating	29,410 lbs.	29,410 lbs.	29,410 lbs.	29,410 lbs.	29,410 lbs.
Gross Combined Weight Rating	34,410 lbs.	34,410 lbs.	34,410 lbs.	34,410 lbs.	34,410 lbs.
Front Gross Axle Weight Rating	10,410 lbs.	10,410 lbs.	10,410 lbs.	10,410 lbs.	10,410 lbs.
Rear Gross Axle Weight Rating	19,000 lbs.	19,000 lbs.	19,000 lbs.	19,000 lbs.	19,000 lbs.
Unloaded Vehicle Weight	23,205 lbs.	22,500 lbs.	23,740 lbs.	23,580 lbs.	24,180 lbs.
Maximum Carrying Capacity	6,205 lbs.	6,910 lbs.	5,670 lbs.	5,830 lbs.	5,230 lbs.
Cargo Carrying Capacity	4,469 lbs.	5,174 lbs.	3,934 lbs.	4,094 lbs.	3,494 lbs.
MEASUREMENTS	7370	7373	7374	7390	7391
Overall Length	36' 9"	36' 9"	36' 9"	38' 9"	38' 9"
Overall Height (Road Height)	12' 1/2"	12' 1/2"	12' 1/2"	12' 1/2"	12' 1/2"
Interior Height	79 1/2"	79 1/2"	79 1/2"	79 1/2"	79 1/2"
Exterior Width	102"	102"	102"	102"	102"
Wheelbase	228"	228"	228"	252"	252"
TANK CAPACITIES	7370	7373	7374	7390	7391
Water Heater	10 gal.	10 gal.	10 gal.	10 gal.	10 gal.
Gray Tank	45 gal.	45 gal.	45 gal.	40 gal.	40 gal.
Black Tank	40 gal.	40 gal.	40 gal.	45 gal.	45 gal.
Fresh Water Tank(s)	95 gal.	95 gal.	95 gal.	95 gal.	95 gal.
LPG Tank (Volume W.C.)	69 gal.	69 gal.	69 gal.	69 gal.	69 gal.

*Not available on CSA units

Tradewinds LE



CHASSIS SPECIFICATIONS

	SPARTAN
Chassis	Spartan® Summit GTI (27,410 GVWR)
Chassis Design	Raised rail
Steering Gear	TRW TAS 55 power steering gear with 51° turning angle and 20.4:1 steering ratio
Tires	Michelin® radial tires 255/80R22.5(G)
Wheels	Steel wheels with stainless steel wheel simulators and valve extensions; 10 lugs
Service Brakes	Full air brakes with ABS; 15" x 4" front drums; 16.5" x 6" rear drums
Parking Brake	Spring applied, air release on rear drum brakes
Alternator	Leece-Neville® 160 Amp alternator
Chassis Batteries	Two BCI group 31 1,000 CCA

Front Suspension	Tuthill® independent front suspension
Rear Suspension	Reyco® 610AR 17,000 lb. capacity
Spring Type	Full air ride with dual ride height control valves and electronic manual air dump
Shock Absorbers	Tune Bilstein®
Driveline	Dana® Spicer 1610 series
Drive Axle	Meritor® RS-19-145
Drive Axle Ratio	4.88:1
Fuel Capacity	100 gallon fuel tank
Engine Block Heater	120V 1,000 watt engine block heater
Cooling Pack Mounting	Rear mounted
Charge Air Cooler	Cross flow
Transmission Oil Cooler	Integral to radiator; water to oil

Cooling Fan	Belt driven
Air Intake Restriction Indicator	Air intake restriction indicator
Other features	Frame mounted fuel/water separator
Towing Equipment	7,000 lb. Class III hitch receiver with skid bar and six-pin electrical connector
Chassis Warranty	2 years/50,000 miles
Engine	Caterpillar® 3126B
Displacement	7.2L
Peak Horsepower	330 HP @ 2,200 RPM
Peak Torque	860 lb/ft torque @ 1,440 RPM
Engine/Exhaust Brake	Pac Brake® exhaust brake
Engine Warranty	5 years/unlimited miles

Transmission	Allison® MH 3000
Transmission Type	Six speed automatic with 2 overdrive gears
Gear ratios	3.49:1 First gear 1.86:1 Second gear 1.41:1 Third gear 1.00:1 Fourth gear 0.75:1 Fifth gear 0.65:1 Sixth gear -5.03:1 Reverse
Transmission Shifter	T-handle electronic shifter with digital display
Transmission Warranty	3 years/unlimited miles



TRADEWINDS LE FEATURES & SPECIFICATIONS

BODY CONSTRUCTION

Duraframe® patented steel sub floor construction
 Steel framed laminated floor
 Steel framed crowned laminated fiberglass roof
 Steel framed laminated fiberglass high gloss walls
 Custom painted two color exterior graphics with choice of two color packages
 Molded, high gloss, full fiberglass caps with integrated front and rear bumpers
 Soft touch interior ceiling material
 Electric slide-out rooms
 Fiberglass exterior storage compartment doors, insulated with integrated paddle latches and struts
 Aluminum rear ladder
 Convenience D-Ring mounts in basement storage compartments
 Automotive undercoating as required
 Steel insulated front bulkhead

COCKPIT FEATURES

Pioneer® AM/FM stereo with CD player, XM™ receiver and remote control
 Driver and passenger gooseneck reading lights
 Custom dash in dark gray matte grid finish with full gauge package
 Cockpit heater and air conditioner with dash controls
 Convenience tray
 Pantographic windshield wipers
 Power steering
 Electronic cruise control
 18" tilt and telescopic steering wheel
 Rear vision system with microphone
 White power controlled heated exterior mirrors
 Hydraulic leveling jacks with dash mounted controls
 Passenger workstation with 12V receptacle and 110V receptacle
 Aviation style sun visors
 Cup holders
 Two 2-speed dash fans
 Electric stepwell cover
 CB radio ready
 Wraparound privacy curtain with easy reach wand

APPLIANCES & ACCESSORIES

RCA® 27" TV with front A/V jacks in cockpit
 RCA® Hi-Fi VCR in cockpit
 Multi-speaker TV sound
 RCA® 19" TV with front A/V jacks in bedroom
 10 cu. ft. double door refrigerator with icemaker and pantry
 High output three burner cook top with flush mount Corian® range cover
 GE® SpaceSaver convection microwave oven with carousel, built-in light and fan
 Systems monitor panel
 Cable TV hook-up and multiple telephone jacks
 Wall mounted AM/FM stereo with CD, clock, alarm and inside temperature monitor in bedroom
 Winegard® TV antenna

FURNITURE

Kustom Fit® fabric 6-way power driver recliner seat with swivel base and integrated seatbelt
 Kustom Fit® fabric passenger recliner seat with swivel base and integrated seatbelt
 Kustom Fit® 74" Wonder-Bed® sleeper sofa with slide-in armrests and drawer underneath
 Freestanding Kustom Fit® fabric swivel recliner chair with footrest

INTERIORS

Throughout Coach

Maple paneling and doors
 Solid wood raised panel cabinet doors and face framing
 Deluxe overhead storage doors with telestrut hardware; positive catches on all other doors
 Drawers with ball bearing roller guide design

Cockpit Area

Floormats

Living Area

Patterned plush carpet with deluxe pad
 Pleated day/night shades
 Valances and lambrequins
 Magazine rack
 Freestanding dinette table with two low-back wooden chairs (M374 and M391)
 Booth dinette with slide-out storage drawers (M375 and M395)

Kitchen Area

Corian® kitchen countertop with Corian® sink cover
 Slide-out pantry
 Wastebasket
 Silverware organizer
 Ceramic tile floor
 Venetian blind and valance

Bath Area

Ceramic tile floor
 Corian® edged bathroom lavatory
 Raised panel doors
 Insulated skylight in shower
 Towel bars
 Medicine cabinet
 Window in private toilet room
 Residential style pocket doors
 Residential toilet room door with hardware

Bedroom Area

Patterned plush carpet with deluxe pad
 Venetian mini-blinds
 Valances and lambrequins
 Raised panel doors
 "Sandpiper Deluxe" residential-style pillow top mattress
 Queen bed slide-out
 Coordinate bedspread, pillows and shams
 Radius padded headboard
 Nightstands with Corian® edged tops
 Cedar lining in wardrobe
 Rear wardrobe with mirrored sliding doors

Wall dresser with drawers and laundry hamper
 Residential style closet rods

ELECTRICAL SYSTEMS & LIGHTS

50 Amp 120V distribution panel and cord
 50 Amp shore power cord
 Dual 10 watt solar panels
 Onan® 6.5 kW LP generator
 2,000 watt inverter/converter with remote on/off switch
 Four 6V deep cycle house batteries
 Slide-out battery tray
 Two 760 CCA 12V maintenance-free chassis batteries
 Battery disconnect switch
 Porch light
 Patio receptacle
 Three water pump switches (kitchen, bath and service station)
 Decorative overhead dining light
 Cosmetic light in bathroom
 Decorative lights in living area
 Courtesy light at entry-door switch panel
 Fluorescent lights in ceiling

PLUMBING & LPG SYSTEMS

Coach Exterior

Heated and insulated holding and water tanks
 Manual dump valves
 Pressurized water fill with regulator
 Variable rate water pump
 Water heater by-pass valve
 Winterization antifreeze inlet to pump
 Holding tank rinsing system (waste tank only)
 Outside shower

Kitchen Area

Water filter in kitchen
 10 gallon gas/electric water heater
 Delta® single lever faucet with side sprayer

Bedroom/Bathroom Area

Porcelain toilet with sprayer
 Clear glass shower enclosure with etched decorative design for privacy
 One piece fiberglass tub and shower
 Single lever brass faucet with crystal handle
 Pre-plumbed for washer/dryer

SAFETY FEATURES

Fire extinguisher
 Deadbolt lock on entrance door
 12V GFI protected circuits (kitchen, bath and exterior)
 Smoke, carbon monoxide (CO) and LPG detectors
 Driver and passenger integrated three point lap and shoulder seatbelts
 Egress window
 Deluxe acrylic exterior assist handle

WINDOWS, DOORS & AWNINGS

Tinted dual pane windows
 Power double entrance step with light and anti-skid

Tinted skylight in bathroom
 Manual patio awning with metal cover*
 Slide-out topper awnings on living room, galley slide and bedroom slide*

VENTILATION

Dual 13,500 BTU Duo-Therm® low profile Penguin® air conditioners with in-ceiling ducting
 35,000 BTU furnace
 12V fan in bathroom
 12V Fan-Tastic® Vent with wall thermostat and rain sensor in living area

OPTIONAL FEATURES

Exterior

Upgraded custom painted two color exterior graphics with choice of two color packages (includes painted to match power controlled heated exterior mirrors)
 Manual front entry door awning*
 Manual living room and bedroom window awning package
 Onan® 7.5 kW Quiet Diesel generator
 Dual 13,500 BTU Duo-Therm® low profile Penguin® air conditioners with heat pumps, two-speed fans and in-ceiling ducting

Throughout Coach

Walnut paneling and doors

Cockpit Area

Pioneer® multi-disc CD changer
 RCA® DVD player
 Kingdome® automatic stationary satellite dish
 Roof mounted dual chrome trumpet air horns

Furniture

Kustom Fit® leather 6-way power driver recliner seat with swivel base and integrated seatbelt and Kustom Fit® leather passenger recliner seat with swivel base and integrated seatbelt
 Kustom Fit® leather 6-way power driver recliner seat with swivel base and integrated seatbelt and Kustom Fit® leather extra-wide passenger recliner seat with swivel base and integrated seatbelt
 Kustom Fit® 74" leather Wonder-Bed® sleeper sofa with slide-in armrests and drawer underneath
 Freestanding Kustom Fit® leather swivel recliner chair with footrest
 Booth dinette with slide-out storage drawers (M374 and M391)

Living Area

Two wooden folding dining chairs
 Freestanding dinette table with two low-back wooden chairs (M375 and M395)
 Booth dinette with slide-out storage drawers (M374 and M391)

Kitchen Area

21" high output three burner range and oven
 12 cu. ft. side-by-side refrigerator with ice maker (delete slide-out pantry)

Bedroom/Bathroom Area

Combination washer/dryer

WEIGHTS (POUNDS)	M374	M375	M391	M395
Spartan GTI				
Gross Vehicle Weight Rating	27,400 lbs.	27,400 lbs.	27,400 lbs.	27,400 lbs.
Gross Combined Weight Rating	32,400 lbs.	32,400 lbs.	32,400 lbs.	32,400 lbs.
Front Gross Axle Weight Rating	10,410 lbs.	10,410 lbs.	10,410 lbs.	10,410 lbs.
Rear Gross Axle Weight Rating	17,000 lbs.	17,000 lbs.	17,000 lbs.	17,000 lbs.
Unloaded Vehicle Weight	23,180 lbs.	23,530 lbs.	22,600 lbs.	23,960 lbs.
Maximum Carrying Capacity	4,220 lbs.	3,870 lbs.	4,800 lbs.	3,440 lbs.
Cargo Carrying Capacity	2,484 lbs.	2,134 lbs.	3,064 lbs.	1,704 lbs.
MEASUREMENTS	M374	M375	M391	M395
Wheelbase	228"	228"	252"	252"
Overall Length	37' 1"	37' 1"	39' 1"	39' 1"
Exterior Height (Road Height)	12' 2"	12' 2"	12' 2"	12' 2"
Exterior Height (with Satellite)	12' 8"	12' 8"	12' 8"	12' 8"
Interior Height	79 1/2"	79 1/2"	79 1/2"	79 1/2"
Interior Width	98"	98"	98"	98"
Exterior Width	102"	102"	102"	102"
TANK CAPACITIES	M374	M375	M391	M395
Water Heater	10 gal.	10 gal.	10 gal.	10 gal.
Gray Tank	40 gal.	40 gal.	40 gal.	40 gal.
Black Tank	45 gal.	45 gal.	45 gal.	45 gal.
Fresh Water Tank(s)	95 gal.	95 gal.	95 gal.	95 gal.
LPG Tank (Volume W.C.)	69 gal.	69 gal.	69 gal.	69 gal.

*Not available on CSA units

For more of everything
National RV Inc. related
join us at NRVCLUB.com



National RV Club (NRVC) is not affiliated with any other club or organization.
NRVC has no relationship with the defunct National R.V. Inc. or National R.V. Holdings.
NRVC has no relationship with REV Group, REV Recreation Group, or their motor home brands.