

Dolphin



TRUST NATIONAL RV

National RV is celebrating its fortieth year of building quality recreational vehicles. During that time, the company has grown from a small camper manufacturer to one of America's premiere builders of diesel and gasoline powered class "A" motorhomes. So take a few moments to read the story of how this small company from Southern California shunned the trailer manufacturing techniques of its mass production competitors to focus on building the best motorhomes on the road.



Whether you choose the full-featured Dolphin or the luxurious Dolphin LX, both built on the awesome Workhorse W-series chassis, you will own a motorhome that far surpasses the competition in every aspect of features, quality and style.

CONTENTS	See Page
California Style	4
<i>Dolphin bears the distinctive styling that is the hallmark of a National RV</i>	
Enhanced Livability	6
<i>Livability is where a thoughtfully planned, well-built motorhome is truly set apart from the travel trailer-like amenities of competitors' motorhomes</i>	
Dolphin LX Special Editions	8
<i>Every Dolphin LX comes in the opulent interior decor and exterior custom paint and graphics packages of the Sterling or Heritage Special Editions.</i>	
No Compromises	10
<i>National RV chooses to use higher quality methods and components</i>	
Full Featured Inside & Out	12
<i>Walk around a Dolphin and you'll find attention to detail that extends to the most remote corners of the coach</i>	
Four Seasons Comfort	14
<i>Dolphin's ingenious basement air conditioning system is the centerpiece of an array of effective, efficient climate control features</i>	
Total Engineering	16
<i>Rather than the haphazard collection of random parts that other manufacturers cobble together, Dolphin is a complete, engineered system</i>	
Join the Family	18
<i>Enjoy the benefits of being part of the National RV family</i>	
Personalize Your Dolphin	20
<i>A choice of elegant interior and exterior color combinations</i>	



SAN FERNANDO, CA HOME OF DOLPHIN CAMPER COMPANY, PREDECESSOR TO NATIONAL RV, c.1966

BUILDING A BETTER MOTORHOME

Deciding to build a quality motorhome that bring its owners years of enjoyment is easy. National RV strives to use the latest technologies, yet the basics are constant: intelligent design and engineering coupled with the best materials and methods.

Every RV manufacturer knows HOW to build a better motorhome; National RV chooses to DO IT. Fundamental concepts—steel is stronger than aluminum,

block foam insulation won't sag like blanket insulation—determine the quality of a motorhome over the long haul. National RV chooses to adhere to those concepts. And with thousands of National RV products on the road and in use today (some for nearly 40 years now) the success of this strategy is evident in every happy owner.

To learn more about what it takes to build a better motorhome, follow the virtual factory tour, which begins right here! →

SINGLE LOCATION

National RV has experienced phenomenal growth over the past forty years but has grown by reinvesting in its own products and facilities in sunny Southern California. Designing and building everything at a single location results in consistent quality across product lines, increased efficiencies and a stable, loyal workforce in the company's home community. When you buy a National RV, you'll never wonder whether it came from the "good" plant. They're all built in Perris, and they're all good.

INVESTING IN THE FUTURE

Four decades have passed, yet there is still so much to learn. Emerging technologies, demographics and customer wants are constantly shaping the idea of what a motorhome should be. National RV's product development team is driven by customer feedback and the possibilities of emerging technologies. With a history of important innovations and patents already under its belt, National RV continues to research, develop, and invest in the latest manufacturing technologies to ensure ever increasing levels of quality and efficiency.



DOLPHIN LX 6355 • STERLING • WALNUT

COMPUTER AIDED DESIGN

Every motorhome begins as an idea. In our Engineering Department, skilled drafters use the latest Computer Aided Design software to model the coach in cyberspace, ensuring a proper design and true fit of every component before a single piece is machined or cut.



PROTOTYPE & TOOLMAKING

All molds, jigs and other manufacturing fixtures are built and maintained in-house to ensure consistent quality from part to part. While National RV takes pride in its use of the latest technologies wherever possible to improve manufacturing quality and efficiency, certain tasks still require the hands-on attention of skilled craftsmen. National RV's toolmakers are an excellent example, crafting by hand the molds and jigs that will ensure the consistent style and quality of production pieces for months and years afterward.



CALIFORNIA STYLE

Maybe it's because we're situated directly between Hollywood and Palm Springs. Maybe it's because we work hard to build a motorhome that looks and feels like home. Whatever the reason, every National RV motorhome brings a little bit of California sunshine wherever it goes. And every Dolphin motorhome bears the distinctive "California Styling" that is the hallmark of a National RV.



DOLPHIN 5342 • MOCHA • MAPLE

STYLISH EXTERIORS

Dolphin sports sleekly contoured, molded fiberglass compartment doors, fenders and front and rear caps that lend it a distinctive, sculpted look—setting it apart from the boxy, flat surfaces and hard corners of typical motorhomes.

The gleaming high gloss gelcoat fiberglass is complemented with stylish, UV-resistant vinyl graphics in a choice of attractive color palettes.



TWO FLAVORS OF DOLPHIN

Check the list of product differences below to determine which Dolphin is perfect for you!

Dolphin



- Interior decors: Cairo, Mocha
- Exterior graphics: custom vinyl in blue or brown and tan palettes
- Designer vinyl flooring in kitchen, hall and bath area
- Chrome electric horns optional
- Multi-disc CD changer optional
- 8 cu. ft. double door refrigerator standard; 10 or 12 cu. ft. refrigerator with ice maker optional
- RCA® 19" TV in bedroom
- Home theater package with DVD and 5-speaker theater sound optional
- Soft touch OptimaLeather® cockpit seating optional
- Fabric clad swivel recliner standard; OptimaLeather® swivel recliner optional
- Maple cabinets and paneling are standard with all interior decors; Cherry is optional
- Optional dining table/cabinet includes two low-back wooden chairs

Dolphin LX



- Interior decors: Sterling, Heritage
- Exterior graphics: custom paint and vinyl in Sterling or Heritage palettes
- Ceramic tile flooring with inlaid tile accents in kitchen, hall and bath area
- Chrome electric horns *STANDARD*
- Multi-disc CD changer *STANDARD*
- 10 cu. ft. refrigerator with ice maker *STANDARD*; 12 cu. ft. refrigerator with ice maker optional
- RCA® 20" flat screen TV in bedroom
- Home theater package with DVD and 5-speaker theater sound *STANDARD*
- Soft touch OptimaLeather® cockpit seating *STANDARD*
- Soft touch OptimaLeather® Euro-recliner with ottoman *STANDARD*
- Maple cabinets and paneling standard; Cherry optional on Heritage package; Walnut optional on Sterling package
- Optional dining table/cabinet includes two high-back wooden chairs
- Optional 2,000 watt inverter/converter with remote on/off switch and two additional 6V deep cycle house batteries

DISTINCTIVE INTERIORS

National RV's professional interior designers have created a choice of interior décors—Mocha or Cairo for Dolphin and Sterling or Heritage for Dolphin LX—that are befitting a legendary motorhome brand. Throughout the coach, luxurious furnishings and amenities are coordinated in tasteful displays of color and texture. Opulent fabric choices (see back page) are complemented by a variety of beautiful cabinetry wood choices. Designer light fixtures, hardware and floor coverings complete each inviting interior.



DOLPHIN 5342 • MOCHA • MAPLE



DOLPHIN 5342 • MOCHA • MAPLE



DOLPHIN 5342 • MOCHA • MAPLE

FACTORY TOUR CONTINUED

PUTTING TECHNOLOGY TO WORK

Throughout the plant, high tech equipment is used to turn engineered plans into precisely milled components. National RV has invested heavily in the latest manufacturing technologies to ensure consistent quality as well as to maximize manufacturing efficiencies.



A HIGHLY SKILLED WORKFORCE

In today's manufacturing environment, it takes skills to remain competitive. National RV has trained thousands of employees in everything from electronics to welding to occupational health and safety.



IN-HOUSE MANUFACTURING

National RV strives to build as many of the coach components as possible in-house. From ABS plastic thermo-forming to fiberglass to wiring harnesses, National RV is a *manufacturer*, not merely an assembler. In-house manufacturing enables National RV to closely monitor quality at every stage of manufacturing. Another benefit is that lower costs, as only one company is trying to make a profit on the same component. This is one way in which National RV is able to pack more features—and higher quality—into motorhomes than similarly priced models from competing motorhome "assemblers".



ENHANCED LIVABILITY

Many gasoline motorhomes are built by companies that specialize in building inexpensive travel trailers—and their expertise in using cheaper materials and methods is evident in their motorhomes. National RV, on the other hand, was built on designing and manufacturing motorhomes for the RV enthusiast. This fundamental difference in design and manufacturing philosophy is what sets Dolphin apart from the competition, and yields a level of quality, comfort and livability that other motorhomes just can't match.



DOLPHIN 5342 • CAIRO • CHERRY

SMART USE OF SPACE
Take a look around a Dolphin motorhome and you'll discover that no space is wasted. Wherever possible, there are convenient and abundant storage spaces, nooks and recesses. Yet, the coach interior remains fresh, open and livable—never cluttered. Making a coach seem bigger on the inside than it looks from the outside is one of our greatest skills. The intelligent use of space can only be learned through decades of motorhome refinement, and that's why National RV is so good at it.

SPACIOUS FLOORPLANS

All Dolphin floorplans feature double or triple slide-outs to pack maximum living space into a coach size that's easy to drive and park. And wherever you look, every available space is thoughtfully utilized for extra storage or convenient location of coach components.

THAT'S ENTERTAINMENT!

Whether you're over-nighting in town or in the boonies, Dolphin's wide array of entertainment features will keep you tuned in and connected. A huge 27" flat screen TV is placed in the cabinetry above the cockpit area for comfortable viewing from anywhere in the living area. A DVD player, cable TV hookups and an optional satellite dish expand your entertainment possibilities. In the bedroom, enjoy Dolphin's 19" TV or Dolphin LX's 20" flat screen TV, both with front-mounted A/V jacks. An available patio entertainment package features a 19" TV and AM/FM/CD stereo on a swivel slide-out mount in an exterior compartment. All Dolphins come pre-wired for a King-Dome® automatic satellite dish, and the dish itself is available as an option.



DOLPHIN LX 6342 • HERITAGE • MAPLE

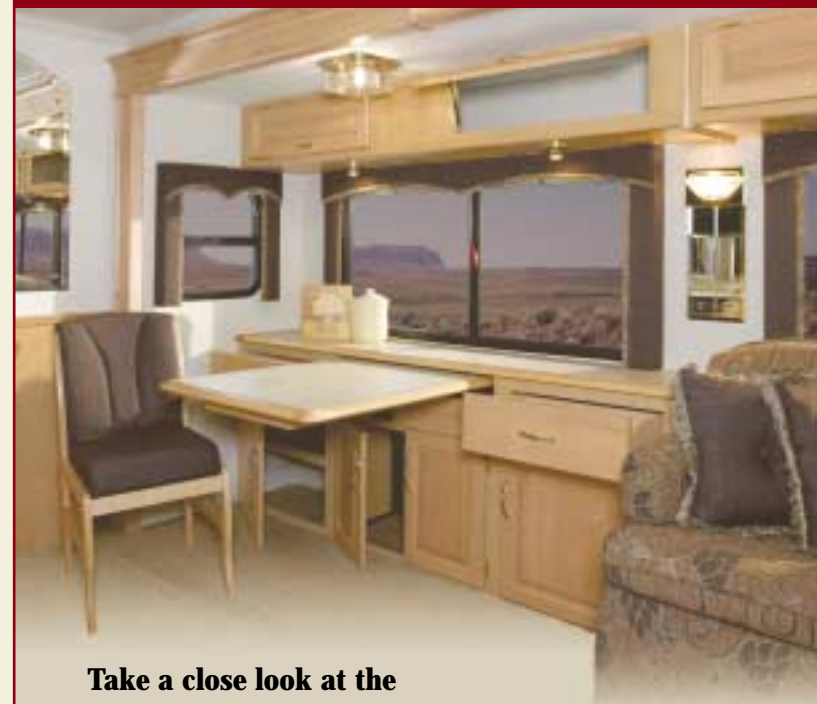


DOLPHIN LX 6342 • HERITAGE • MAPLE



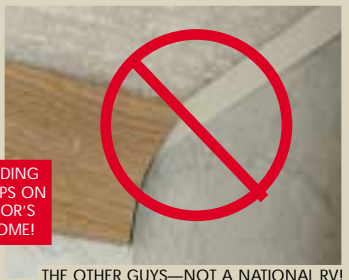
DOLPHIN 5342 • CAIRO • CHERRY

SUPERIOR CABINET CONSTRUCTION



Take a close look at the cabinetry inside a Dolphin motorhome. You'll find many thoughtful details that set Dolphin apart.

- Carpet lined kitchen cabinets reduce noise and protect your pots and pans during transit.
- Solid hardwood raised panel or flat panel cabinet doors and drawer fronts provide long-lasting beauty and rigidity.
- Telestrut hardware on upward opening overhead cabinet doors conveniently holds them open, then holds them in their positive catches when closed.
- Storage space everywhere you look, such as a convenient vertical pull-out pantry and huge storage areas under the dinette seats with convenient slide-out bins on Dolphin LX!
- Superior fit and finish with tight cabinet-to-wall fit; compare to large gaps covered with gimp molding on competitors' motorhomes—**there is no gimp molding in a Dolphin!**



GIMP MOLDING HIDING GAPS ON COMPETITOR'S MOTORHOME!

THE OTHER GUYS—NOT A NATIONAL RV!

FACTORY TOUR CONTINUED

COLD HARD STEEL

All of the structural components of the motorhome—subfloor structure, sidewalls, floors, bulkhead and the arched roof—are fabricated from steel. Competitors may use aluminum, wood or other materials to save costs, but none are as strong as cold hard steel.



THE PATENTED DURAFRAME®

In the chassis shop, the patented Duraframe® all-steel subfloor system is constructed on precision assembly jigs. Fabricated from carefully formed steel components, the Duraframe® is welded at every joint to provide unyielding strength over the long haul. The completed Duraframe® substructure is carefully lowered onto the motorhome chassis then the two are welded together to form a permanent, super-strong structure. Next, a generous coat of rust-inhibiting paint is applied to the entire assembly before it enters the main assembly line.



DOLPHIN LX SPECIAL EDITIONS

Every Dolphin LX motorhome is a Special Edition. Each is a testament to impeccable taste and a fine example of the art of motorhome design, from custom exterior paint and vinyl graphics to opulently designed interiors and other special amenities.



DOLPHIN LX 6355 • STERLING • WALNUT

HERITAGE EDITION
The Heritage Edition is an eclectic mix of simple values and sophisticated tastes. Richly patterned textiles and soft-touch OptimaLeather® denote elegance and comfort. Fine grained maple or cherry wood cabinets complement the rich fabrics with contemporary charm. Premium Corian® with accent edge moldings cover countertops in the living, kitchen and bath areas. The hand-laid ceramic tile flooring with accent inlays hints of long lasting beauty that is found throughout this fine motorhome.



DOLPHIN LX 6342 • HERITAGE

CUSTOM PAINT



STERLING

While you and your guests will enjoy the refinements of the Sterling and Heritage Edition interiors, your Dolphin LX will certainly stand out on the highways and in parks due to an elegant custom paint and vinyl graphics package. Lustrous top-quality paint is professionally applied in National RV's state-of-the-art paint facilities. Wherever you go, the custom exterior graphics will announce your arrival in style.



HERITAGE



DOLPHIN LX 6355 • STERLING • WALNUT

STERLING EDITION
An etched stainless steel plaque announces that you are entering the fabulous Sterling Edition. Inside, gleaming metal sets the tone, with fine stainless steel appliances and fixtures throughout. The brushed metal meets with fine Corian® countertops and rich maple cabinetry (you may also choose walnut). Throughout each Sterling Edition, carefully chosen fabrics cover the furniture, bedding and window treatments in stately elegance. Hand laid ceramic tile with artful tile inlays covers the floor from the kitchen to the bathroom.



DOLPHIN LX 6355 • STERLING • WALNUT



DOLPHIN LX 6355 • STERLING • WALNUT



DOLPHIN LX 6342 • HERITAGE • MAPLE



DOLPHIN LX 6342 • HERITAGE • MAPLE

FACTORY TOUR CONTINUED

CABINET SHOP

In another part of the plant, cabinetmakers are busy crafting the wooden fixtures to be placed inside the coach. Computer Aided Design (CAD) provides precisely fit components, then skilled craftsmen bring them together into a sturdy, elegant finished product.



ASSEMBLY LINE

Once it arrives on the assembly line from the chassis shop, the building of the coach "house" begins. The floor is laid, cabinets set into place, and all wiring and plumbing routed.



TUBULAR STEEL COACH BODY FRAME

In the coach body shop, all coach body components—sidewalls, floors and roofs—are constructed with frames of tubular steel. Here is where precision pays off, as a properly fabricated wall frame will ensure a tight coach body structure over the long haul.



No COMPROMISES

National RV never compromises on quality. While other manufacturers “build ‘em cheap” to get the initial sale, we believe that building high quality into even our modestly priced motorhomes is an investment in the future.

Dolphin’s higher quality standards pay off in retained value and high resale value. When you’re ready to trade your Dolphin in after many years of faithful service, you’ll be thankful that National RV went the extra mile. And that’s why so many Dolphin owners are repeat buyers. Some have been driving Dolphins for decades!



DOLPHIN 5342 • CAIRO • CHERRY

GENUINE CORIAN®

National RV proudly uses only genuine Corian® solid surface materials on every Dolphin kitchen countertop. It’s the best countertop you can build into a motorhome—no other material can compare for beauty, performance and durability. At National RV, we don’t cut corners like our competitors by using cheaper laminates or imitation Corian®.

CULINARY AMENITIES

Cooking in Dolphin’s well appointed kitchen is a delight. The standard GE® SpaceSaver® convection microwave oven and high output 3-burner cooktop (or optional 21” cooktop with range/oven) make quick work of any meal. Dolphin’s 8 cu. ft. and Dolphin LX’s 10 cu. ft. (with icemaker) double door refrigerators provide plenty of food storage. Upgrade Dolphin to the 10 cu. ft. refrigerator with icemaker, or upgrade Dolphin or Dolphin LX to the massive 12 cu. ft. Norcold® four door refrigerator with icemaker* for maximum food storage on extended trips.

*Requires pantry delete



DOLPHIN 5342 • MOCHA • MAPLE



DOLPHIN LX 6355 • STERLING • WALNUT

KUSTOM-FIT® SEATING

For comfort that lasts, no seat beats Kustom-Fit®. Built especially for National RV in our color coordinated fabrics, this cockpit and living area seating exceeds the comfort and quality of furniture in much more expensive “highline” motorhomes.

With Kustom-Fit’s exclusive cold poured foam and welded steel frame, these seats will provide driving and relaxation comfort for many years to come.



DOLPHIN LX 6342 • HERITAGE • MAPLE



COLD Poured SEAT FOAM HAS A 10 YEAR WARRANTY!

Each cushion is formed as a single piece, molded in the correct shape. Competitors’ seats are pieced together from blocks of foam which can come unglued and fall apart.

STEEL SEAT FRAME

Constructed of welded tubular steel for superior strength; carries a lifetime warranty.



45 lbs. DRAWER CAPACITY!

RESIDENTIAL QUALITY DRAWER CONSTRUCTION

Accuride® steel ball bearing drawer glides provide 45 lbs. of smooth operating drawer capacity; compare that to competitors’ 7 lb. drawer capacity using plastic drawer glides. These drawers are constructed using the time-honored dovetail joint method, not staples. Each drawer is finished with a solid hardwood drawer front for lasting beauty and structural integrity.



DOLPHIN LX 6342 • HERITAGE • MAPLE

ONE-PIECE FIBERGLASS SHOWER

Step into a competitor’s plastic shower and feel it give under your weight. Then step into a National RV shower and feel the satisfying rigidity that only a National RV one piece fiberglass shower provides.



COMPETITORS' PLASTIC SHOWER

NATIONAL RV FIBERGLASS SHOWER

ELECTRICAL SYSTEM



ONAN® MARQUIS GENERATOR

The reliable ultra-quiet Onan® generator provides 7.0 kW of power no matter how far you are from civilization.

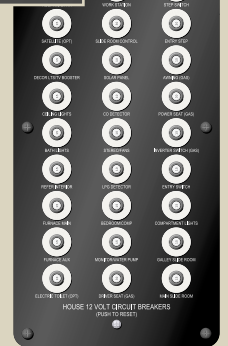
RESETTABLE BREAKERS

Control of Dolphin’s advanced house electrical system is at your fingertips with an ingenious new breaker panel



conveniently located inside the coach.

Now, rather than having to carry—and find—extra fuses whenever a circuit is overloaded, simply push the breaker to reset it. All circuits are clearly labeled for easy identification.



50 AMP SERVICE & CORD

Compared to competitors’ 30 Amp service, Dolphin’s 50 Amp solid state converter and charger and 600 watt inverter provide plenty of power for comfortable living. Dolphin LX can be upgraded with a powerful 2,000 watt inverter/converter, remote switch and two extra house batteries.

WALL SWITCHES FOR CEILING LIGHTS

Centrally located wall switches make turning ceiling lights on or off more convenient.

FACTORY TOUR CONTINUED

A COCOON OF INSULATION

The entire coach is literally surrounded in high density EPS block foam insulation. Each piece is precisely cut to fit between the members of the tubular steel frame then laminated into place. This insulation will never settle or sag like fiberglass blanket insulation.



VACUUM LAMINATION

All coach body panels are vacuum laminated for unequalled strength and durability. This process uses advanced adhesives and vacuum to bond the various input components into a single, inseparable unit.



ADVANCED INDUSTRIAL ADHESIVES

National RV’s lamination process uses specially formulated adhesives to permanently bond the components together into a single, inseparable piece. Computer controlled extruders precisely meter the adhesive on to the workpiece between each layer of the assembly. As the extruder passes, a fine mist of water is emitted over the adhesive as a catalyst. From this point, skilled workmen move swiftly to complete the assembly and move it into the vacuum table before the adhesive begins to cure.



FULL FEATURED INSIDE & OUT!

Walk around a Dolphin and you'll discover an uncommon attention to detail even in the most remote corners of the motorhome. On the roof, find a seamless fiberglass roof skin. Open a storage compartment door and look through all the way to the other side. Run a hand along the sleek, molded fiberglass body panels and feel the quality that sets Dolphin apart.



DOLPHIN 5342

FULL GELCOAT FIBERGLASS EXTERIOR
Every Dolphin motorhome is completely surrounded by gelcoat fiberglass—just like a boat—for long lasting quality, performance and great looks. The sidewalls, full front and rear caps, compartment

doors, and even the roof all have exterior surfaces made of gleaming, durable gelcoat fiberglass. Dolphin is the only motorhome in its class that has it, while others choose to cut costs by using plastic, rubber and other cheaper materials.

LEVELING JACKS
Quickly level the coach from the comfort of the driver's seat. Some motorhomes use only 3 jacks to cut costs but Dolphin features 4 leveling jacks—one on each corner—for a firm, stable living area.

FLUSH SLIDE-OUTS
Look down the sides of other motorhomes and you'll see unsightly, high-drag protrusions at the slide-out seams. Dolphin's slide-outs use an ingenious double bulb sealing system to provide a flush surface when closed and a water-tight seal at all times.

CAVERNOUS BASEMENT STORAGE BAYS
National RV's patented Duraframe® all-steel subfloor system makes huge pass-through basement storage bays possible. The Duraframe® provides unmatched coach support through a steel truss framework that is engineered to provide both strength and rigidity to the coach. The design of the Duraframe® also maximizes basement storage volume. Thick tubular steel risers lift the coach floor above the chassis frame rails for even more space and to provide pass-through functionality.

EASY UTILITIES ACCESS
Few motorhomes can match the functionality and convenience found in Dolphin's utilities compartment:

- Clearly labeled, easy to reach valves
- Black tank rinse system
- Pressurized water fill with regulator
- Inlet-to-pump for using non-pressurized fresh water sources and for winterizing
- Heated and insulated compartment
- Water heater bypass valve

96" DRIVING SPACE
Dolphin's contoured fiberglass lower skirt effectively creates a 96" (standard width) driving space for a coach that boasts all of the living space of a 102" wide body motorhome. This narrower width close to the road makes it easier to drive and maneuver through parking lots and tight spaces without striking curbs and other obstructions with the coach's compartment doors and lower body skirt.



PATIO AWNING
A color-coordinated patio awning with metal cover is standard equipment on Dolphin and Dolphin LX.



DOLPHIN 5342

FACTORY TOUR CONTINUED

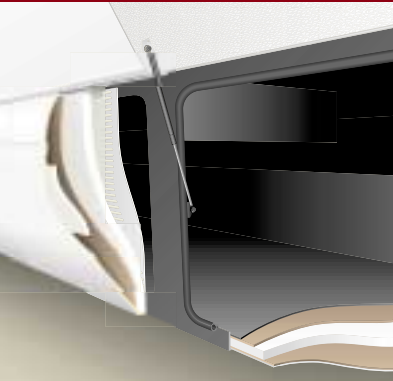
CNC PRECISION
National RV has been at the forefront of implementing new technologies in RV manufacturing. An excellent example is the CNC router. This advanced machine uses a computer-numerically-controlled (CNC) router to precisely cut windows and other openings in the sidewalls. Routed-out pieces aren't wasted—they're further shaped into insulated, sound-deadening panels for our heated basement storage compartments.



IT'S STARTING TO LOOK LIKE A MOTORHOME
By the time the sidewall is set into place on a National RV motorhome, many man-and machine-hours as well as the best materials and methods have already contributed to creating the sturdiest and all around best-performing motorhome sidewalls available. National RV's unique method for attaching the sidewall places no shear forces on the fasteners. Rather, the weight of the sidewall rests upon a sturdy ledge of steel. Screws are used to hold the wall laterally to the edge of the coach floor, but do not bear the weight of the sidewall and roof assemblies.



COMPARTMENTS



Dolphin's storage compartments rival those of motorhomes costing thousands more, and far surpass any competitors in Dolphin's price range.

FIBERGLASS DOORS
The industry standard is to save thousands of dollars at your expense by using cheap, plain looking flat panel compartment doors. By contrast, Dolphin's compartment doors are hand made with a stylishly contoured, molded fiberglass shell. Unlike the industry standard flat panel doors, these doors curve inward closer to the road to avoid rocks, curbs and other road hazards. EPS block foam insulation is laminated into the door, which is finished with a durable stainless steel piano hinge and convenient paddle latch.

LAMINATED FLOORS
Dolphin's storage compartment floors are made with the same vacuum lamination process as the sidewalls, roof and coach floor. This includes sturdy 1/4" decking and thick EPS block foam insulation. Here again Dolphin is far superior to the industry standard—less durable rotocast plastic "tubs" that provide no insulation value.

GAS CHARGED STRUTS
Dual gas charged struts make loading and unloading gear a breeze. They lift the door for you, then hold it up out of your way.

FOUR SEASONS COMFORT

For 2004, National RV completely rewrote the book on motorhome climate control. From its unmatched envelope of insulation to ducted heat to the awesome new basement air conditioning system, the new Dolphin provides true Four Seasons Comfort.



HEAT AND VENTILATION

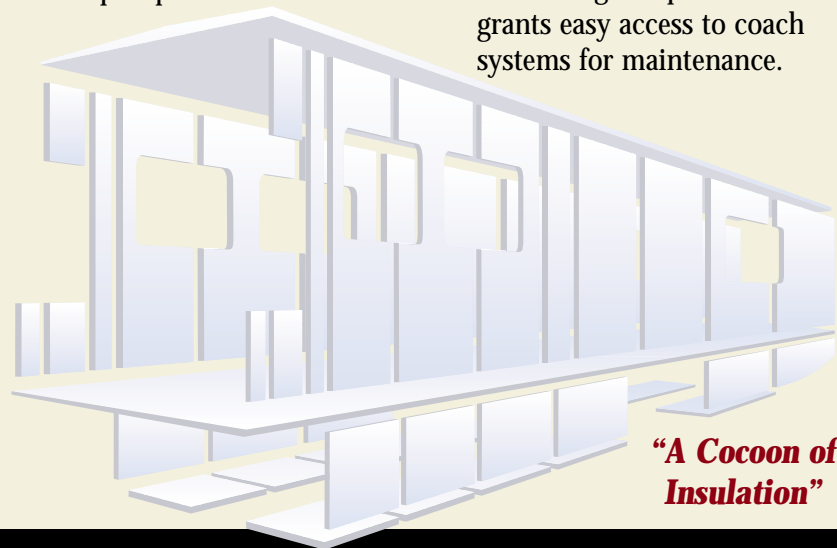
As outside temperatures continue to drop, Dolphin's automated climate control system switches from the basement heat pump unit to the propane-fired 35,000 BTU ducted furnace. On larger models, a second furnace keeps the entire coach cozy from end to end. Dolphin's full array of roof vents—including a thermostat controlled Fan-Tastic® Vent with air freshener—keeps fresh air circulating throughout.

BASEMENT MOUNTED HEATING AND COOLING

Using the powerful new Coleman® basement air conditioner and heat pump combined with National RV's famous dual in-ceiling cold air ducts, the new Dolphin achieves true residential style circulating conditioned air. The Coleman® unit features dual compressors which work together for optimum cooling efficiency—the second unit comes online only when needed. National RV's unique rear output duct works in concert with the ceiling vents and intake registers mounted near the floor to provide truly circular airflow for consistent, even climate control. When fall comes, the Coleman® basement unit goes into heat pump mode to provide efficient whole-house warming.

A COCOON OF INSULATION

Highly efficient EPS block foam insulation is laminated right into every coach body component—the roof, sidewalls, floor, even the basement. It literally surrounds the entire coach. In the ceiling, an ingenious system of interlocking honeycomb foam blocks traps pockets of air (nature's most efficient insulator) in an impervious thermal barrier that is nearly 6" thick! Insulated dual pane windows are standard equipment and come with tinted safety glass for further thermal and UV protection.



"A Cocoon of Insulation"



DOLPHIN 5342 • MOCHA • MAPLE

CONVENIENT CLIMATE CONTROLS

Dolphin climate control modules, as well as other systems monitor panels, are conveniently located in the center of the coach, mounted on a swing-out panel that grants easy access to coach systems for maintenance.

WORKHORSE W-SERIES CHASSIS



THE CHASSIS THAT STARTED A REVOLUTION!

The Workhorse W-22 chassis revolutionized the way we think about gasoline motorhomes. With its brawny stance, unmatched horsepower and Herculean carrying capacity, the W-series made it possible for gasoline motorhomes to compete with diesels in many aspects of size, performance and luxury.

As an integral component of the Duraframe Chassis System, Dolphin's Workhorse W-series chassis provides strength and performance you must drive to appreciate.

HEAVY DUTY FRAME RAILS

Frame rails are made of 50,000 psi steel, a quarter inch thick and 9.6" high. A section modulus of 10.13 cu. in. surpasses that of any other gas motorhome chassis, and even some diesels.

GM VORTEC 8100 ENGINE

The largest, most powerful gas RV engine ever built.

- 8.1 L (496 CID)
- 340 hp @ 4200 rpm
- Torque: 455 lb.-ft. @ 3200



STABIL-RIDE FRONT SUSPENSION

- New technology two-leaf parabolic springs provide an incredibly soft ride and excellent handling.
- Unique "Like-Air™" auxiliary springs control deflection of the parabolic main springs for a soft, compliant ride.
- Patented integral stabilizer bar minimizes body roll for greater control in turns.
- Premium custom-tuned shock absorbers reduce body shake and decrease chassis vibration for greater control and comfort.



ALLISON 1000 SERIES TRANSMISSION

- 5-speed automatic with overdrive
- Electronically controlled
- 3-year / unlimited miles warranty

22.5 INCH WHEELS

Impart an impressive diesel-like appearance and raise the coach higher for larger storage compartments. Michelin® XRV 235/80 R22.5 G tires are rated for heavy duty use.



FACTORY TOUR CONTINUED

HAND MOLDED FIBERGLASS

Front and rear caps, compartment doors and one-piece showers are manufactured in National RV's state-of-the-art fiberglass production facilities. Pure unfilled resins and quality glass fiber are applied, with extra reinforcement applied in critical areas.



WHITER WHITES

The gleaming high gloss gelcoat of the fiberglass components will become the beautiful exterior finish of the motorhome. Extra care is taken in the fiberglass finishing shop to buff each component to a mirror finish before sending it to the assembly line.



CAP PLACEMENT

Front and rear caps are fully loaded with grills, light fixtures and other components before being delivered to the assembly line. Skillful coordination of manufacturing processes are required to ensure a steady flow of components to the line from assembly areas throughout the plant. Once the caps are in place, the motorhome "shell" is complete—with the motorhome surrounded in brilliant, protective, stylishly molded fiberglass. Further up the line, windows and doors are installed as finish work continues on the coach interior and exterior.



TOTAL ENGINEERING

A Dolphin motorhome is a complete engineered system, where each part is designed in concert with the whole to achieve maximum overall performance.

EXAMPLE
TOTAL ENGINEERING

The strength of the Duraframe® Chassis System provides rigidity to the coach body, which leads to the tighter fit of the interior cabinetry. This in turn results in fewer gaps between the cabinetry and sidewall, eliminating the use of gimp molding to hide such gaps.

THE DURAFRAME® CHASSIS SYSTEM

The Duraframe® Chassis System is a marriage of National RV's patented Duraframe® technology and select motorhome chassis from leading manufacturers.

The Duraframe® Chassis System is specifically engineered to provide the optimum performance,

strength, durability, ride quality and basement storage possible.

Rigidly fabricated of welded tube and sheet steel, the Duraframe® Chassis System provides all of the coach strength necessary to carry the load over the long haul. Other manufacturers rely on placing stresses on the coach body—the

sidewalls, roof and floor. This can lead to squeaks and rattles as well as overall loosening and weakening of the coach's structural integrity. In a Dolphin motorhome, the Duraframe® Chassis System bears these stresses, allowing the coach body and all of its components to remain as tight and quiet as possible.

DURAFRAME® CHASSIS SYSTEM

RIGID MOUNTED COMPONENTS

Basement-mounted components such as the LPG tank, batteries and holding tanks are rigidly anchored in the cold hard steel of the Duraframe® Chassis System.

FLUSH FLOOR SLIDE MECHANISM

Flush floor technology provides residential livability. Precise rack and pinion slide mechanisms are attached directly to the Duraframe® for superior support.

ALL STEEL BULKHEAD

Combined with the tubular steel cage-like frames of the sidewalls and roof, the driver and passenger are surrounded by a safety barrier of cold hard steel. Compare to competitors' wooden front bulkheads and aluminum framed walls and roof.



5,000 LB. TOW HITCH

Dolphin's Class III hitch is anchored directly to the all-steel Duraframe® Chassis System structure.

TUBULAR STEEL RISERS

Thick walled tubular steel risers lift the coach floor above the chassis rails to provide deep storage bays with pass-through versatility.

STEEL OUTRIGGERS

The Duraframe® Chassis System uses rigid sheet steel outriggers to provide uniform coach support from the center to the edges. Truss-like arrangement of outriggers and other steel members provides unmatched strength and rigidity to the overall motorhome.

ENGINEERED FOR MULTIPLE SLIDEOUTS

The Duraframe® Chassis System is specifically engineered to provide the strength that today's multiple slide-out motorhomes need.

Other manufacturers rely on the coach sidewalls to absorb some of the stresses of carrying the coach's weight. But slide-outs blow huge holes in that strategy. That's why the Duraframe Chassis

System builds all of the strength necessary to support the coach into the chassis system itself—below the floor line and below the slide-outs.

FINEST METHODS & MATERIALS MAKE UP THE WALLS, FLOOR AND ROOF

National RV uses an advanced vacuum lamination process in the construction of all coach body components. A layer of specially formulated industrial adhesive is carefully applied between each layer of the component. Once joined, the entire assembly is pulled into a vacuum chamber to bond the pieces together as the adhesive cures. The result is a wall that possesses each of the different qualities of its ingredients—the strength of steel, the insulative quality of the EPS block foam, the rigidity of the 1/4" mahogany plywood—all in a single, solid, inseparable component.

TUBULAR STEEL FRAME

Stronger and less susceptible to work fatigue than aluminum and won't decay like wood.

CROWNED ROOF

The best RV roof in the business is built with welded tubular steel rafters. The crowned roof has radius edges for superior runoff.

FIBERGLASS ROOF SKIN

A seamless barrier against moisture; more durable and easier to maintain and repair than rubber or aluminum.

1/4" STRUCTURE-WOOD®

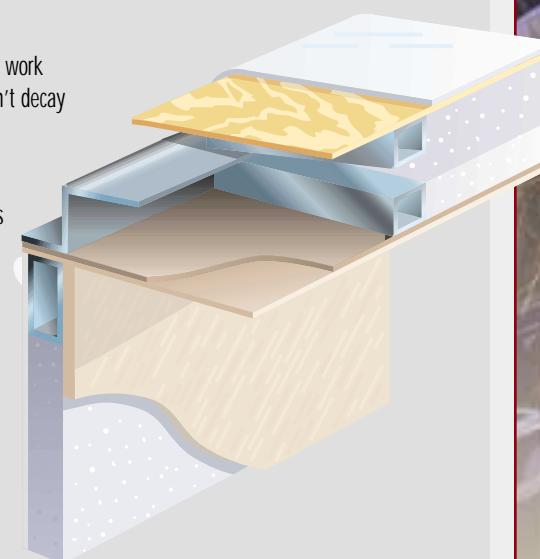
This oriented strand board (OSB) from Weyerhaeuser carries a 25 year warranty and is used for both the roof deck and interior ceiling panel.

EPS BLOCK FOAM INSULATION

Used throughout the coach in every laminated coach body component. This foam won't settle or sag like spun fiberglass insulation. Insulation is up to 6" thick in the roof, and completely surrounds the coach living areas. It's even in the floor!

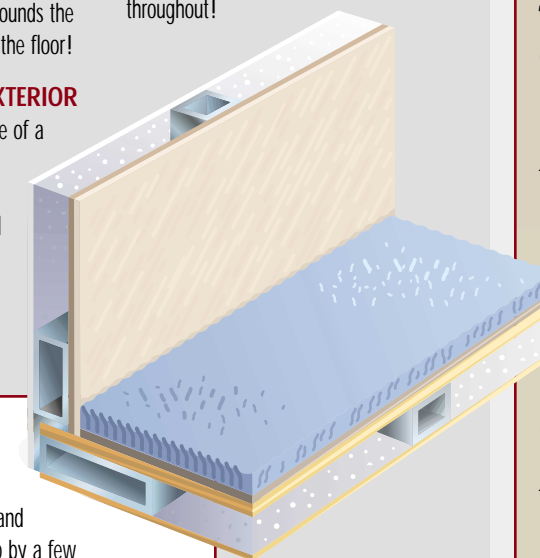
HIGH GLOSS GELCOAT EXTERIOR

Exterior sidewall surface is made of a high gloss fiberglass gelcoat that is *molded into* a luan backing then vacuum laminated to the sidewall structure. The result is excellent resistance to delamination and long-lasting great looks.



1/4" THICK MAHOGANY PLYWOOD INTERIOR WALL PANEL

A thick, firm interior wall surface that's tough enough to anchor our cabinetry...and whatever pictures or fixtures you care to hang, wherever you want to hang them. Competitors' thin walls "give" when you push them, revealing their weakness beneath the surface, with reinforcements built in only where necessary to attach cabinets. Our walls are thick and rigid throughout!



A BETTER WAY TO MOUNT A SIDEWALL

The National RV sidewall is placed *on top* of the steel floor framework. Some manufacturers use screws to fasten the sidewall horizontally to the edge of the floor. This places the fastening screws under an enormous amount of shear force, and the sidewall—and everything above it, such as the roof—is literally being held up by a few small screws! With the National RV method, the weight of the sidewall rests on the steel framework of the floor. Which would you prefer?

COLD HARD STEEL



From the Duraframe® Chassis System to the steel framed coach body, National RV uses steel for EVERY structural component of the motorhome. Other manufacturers may use aluminum or wood in the same places, but none carry the strength and durability characteristics of cold hard steel.



FACTORY TOUR CONTINUED

IN THE BASEMENT

Stylishly contoured molded fiberglass compartment doors flank either side of the coach. EPS foam insulation runs throughout the basement floors, ceiling and doors. Paddle latches and gas charged struts aid in opening compartment doors with ease.



REAP WHAT WE SEW

National RV's professionally designed interior décors come to life in the upholstery shop, where bolts of opulent fabrics are transformed into richly decorated window treatments, throw pillows, bedding and more.



THE MAIN ASSEMBLY LINE

The heart of National RV's production facilities is the main assembly line. Here, a never-ending procession of motorhomes makes its way *sideways* through the plant on a specialized rail system. A veritable beehive of activity, the main line is where most of the coach's manufactured components are installed—name brand appliances, comfortable furnishings, interior lighting and fixtures. Near the end of the line, special UV-resistant graphics are applied and a nearly complete new motorhome emerges.



JOIN THE FAMILY

When you buy a Dolphin motorhome, you become a member of the National RV family.

Through a wide variety of factory service and support benefits for owners to manufacturer support of local clubs and rallies—as well as the Islanders National RV Owners Club—National RV strives to foster a close, mutually beneficial relationship with the owners of the company's products.

GREAT WARRANTY

National RV stands behind the quality components and workmanship built into every Dolphin motorhome with one of America's best RV warranties—including a 3 years/unlimited miles warranty against structural defects to the coach body and Duraframe® Chassis System. National RV covers all other factory installed components for a period of one year from the date of purchase.



ROADSIDE ASSISTANCE

National RV provides a complimentary first year of coverage by Coach Net®, America's leading provider of 24-hour emergency roadside assistance. In addition to emergency towing, Coach Net® provides free trip planning, service scheduling assistance, travel maps, coverage for your towed vehicle and much more.

FACTORY SERVICE

In addition to hundreds of trained service technicians at its dealers throughout North America, National RV operates two large Factory Service and Parts Distribution Centers, one on each coast. This ensures that the expertise and parts to fix any problem are readily available either at your local dealer or one of these centers.



At National RV, we're fanatics for the RV lifestyle! We promote the RV lifestyle and camaraderie among our owners through the National RV Owners Club and local chapters. Membership in the Club is complimentary with your purchase of a National RV.

ISLANDERS GETAWAYS GetAways are the highlight of National RV Owners Club membership. These well-organized events are a great opportunity to meet other RV enthusiasts. GetAways are

held throughout the year at interesting locations across the United States. Quality entertainment, great food and fun activities are all part of every GetAway. You may also seek the assistance of National RV service technicians, tour the latest National RV products and hear the latest news from company officers.

REGIONAL CLUBS

Many regional clubs cater to National RV owners in their local areas. National RV is committed to supporting these clubs through the Islander Newspaper, support for local rallies and events,

and close cooperation through the GetAways and the National RV Owners Club. To find a National RV affiliated regional owners club near you, please visit the National RV website at:

www.nationalrv.com



CUTTING THE RUG AT THE ISLANDERS GETAWAY!



PERRIS, CA SERVICE CENTER



ENJOY GREAT ENTERTAINMENT AT THE GETAWAYS



CHECKING OUT THE LATEST NATIONAL RVs



NATIONAL RV OWNER'S CLUB AT THE ISLANDERS GETAWAY SALINA, KS

THE ISLANDER

The Islander is published quarterly for the benefit of all National RV owners. A subscription to the Islander is included in the Islanders Club membership, which is



provided for free for the first year by National RV. Inside you'll find:

- Product Spotlights
- Tech Tips
- Events Schedules
- Company News
- GetAways
- Reader's Letters
- Interesting Destinations
- Photos and reports from past events
- Regional club info

Ask your dealer for a complimentary copy of The Islander!

FACTORY TOUR CONTINUED

QUALITY ASSURANCE

Of course, no National RV hits the road without first undergoing a thorough battery of quality checks. In the rain test booth, every coach is subjected to a simulated rainstorm—with all of the slideouts extended!



READY FOR DELIVERY!

Finally, quality auditors test every component of the coach for proper operation. After a thorough cleaning, the interior fabrics—carpets, seats and furniture—are covered in protective plastic to ensure delivery of a clean, tidy motorhome.



SEEING IS BELIEVING

We invite you to come to the factory and see for yourself the quality workmanship that goes into every National RV. Here you can walk the assembly line and witness the process as raw steel, fiberglass and other components are skillfully crafted into a complete, finished motorhome.

Plant tours are conducted daily from the main entrance of our manufacturing facilities at 3411 N. Perris Boulevard in sunny Perris, California.



EXTERIOR & INTERIOR COLOR CHOICES

DOLPHIN

EXTERIOR VINYL GRAPHICS

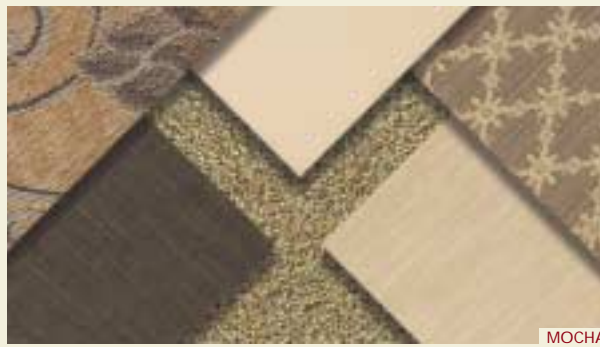


BLUE • AVAILABLE ON ANY DOLPHIN



BROWN & TAN • AVAILABLE ON ANY DOLPHIN

INTERIOR DECOR FABRICS



MOCHA



CAIRO

CABINETY WOODS



MAPLE • STANDARD FOR ALL DOLPHIN



CHERRY • OPTIONAL FOR ALL DOLPHIN

NOTE: For Dolphin, all exterior graphics, interior decors and cabinetry woods are available independent of one another, and may be mixed to suit any taste. For Dolphin LX, either the Sterling or Heritage Edition packages determines the interior decor, exterior color and optional cabinetry woods, which can not be mixed between packages.

DOLPHIN LX

EXTERIOR PAINT AND VINYL GRAPHICS



HERITAGE EXTERIOR GRAPHICS



STERLING EXTERIOR GRAPHICS

Sterling Package also includes stainless steel appliances, cabinetry hardware, shower surround and other fixtures. See Specification Sheet for details.

INTERIOR DECOR FABRICS



HERITAGE

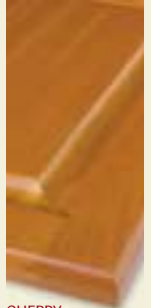


STERLING

CABINETY WOODS



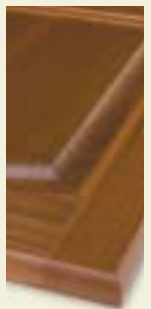
MAPLE
STD FOR HERITAGE



CHERRY
OPT FOR HERITAGE



MAPLE
STD FOR STERLING



WALNUT
OPT FOR STERLING

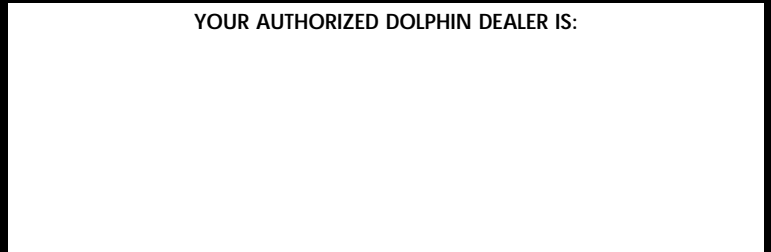
NATIONAL R.V., INC.

3411 N. Perris Boulevard
Perris, California 92571
(800) 260-8527 • Fax (909) 943-8498

www.nationalrv.com

©2003 National R.V., Inc. Due to continuing product improvements, colors, specifications and equipment are subject to change without notice. FEB04

YOUR AUTHORIZED DOLPHIN DEALER IS:



Dolphin

T W O T H O U S A N D F O U R



DOLPHIN



DOLPHIN LX

SPECIFICATIONS & FLOORPLANS



	DOLPHIN				DOLPHIN LX			
<i>WEIGHTS (POUNDS)</i>	5320	5342	5355	5375	6320	6342	6355	6375
Workhorse Chassis								
Gross Vehicle Weight Rating	22,000 lbs.	22,000 lbs.	22,000 lbs.	22,000 lbs.	22,000 lbs.	22,000 lbs.	22,000 lbs.	24,000 lbs.
Gross Combined Weight Rating	26,000 lbs.	26,000 lbs.	26,000 lbs.	26,000 lbs.	26,000 lbs.	26,000 lbs.	26,000 lbs.	30,000 lbs.
Front Gross Axle Weight Rating	8,000 lbs.	8,000 lbs.	8,000 lbs.	8,000 lbs.	8,000 lbs.	8,000 lbs.	8,000 lbs.	9,000 lbs.
Rear Gross Axle Weight Rating	15,000 lbs.	15,000 lbs.	15,000 lbs.	15,000 lbs.	15,000 lbs.	15,000 lbs.	15,000 lbs.	15,500 lbs.
Unloaded Vehicle Weight	18,600 lbs.	19,070 lbs.	19,170 lbs.	20,050 lbs.	18,720 lbs.	19,440 lbs.	19,660 lbs.	20,690 lbs.
Maximum Carrying Capacity	3,400 lbs.	2,930 lbs.	2,830 lbs.	1,950 lbs.	3,280 lbs.	2,560 lbs.	2,340 lbs.	3,310 lbs.
Cargo Carrying Capacity (CCC)	1,956 lbs.	1,486 lbs.	1,386 lbs.	572 lbs.	1,836 lbs.	1,116 lbs.	896 lbs.	1,932 lbs.
MEASUREMENTS	5320	5342	5355	5375	6320	6342	6355	6375
Wheelbase	208"	228"	228"	242"	208"	228"	228"	242"
Overall Length	33' 9"	34' 9"	36'	37' 2"	33' 9"	34' 9"	36'	37' 2"
Exterior Height	11' 10"	11' 10"	11' 10"	11' 10"	11' 10"	11' 10"	11' 10"	11' 10"
Exterior Height (with Satellite)	12' 6"	12' 6"	12' 6"	12' 6"	12' 6"	12' 6"	12' 6"	12' 6"
Interior Height	79½"	79½"	79½"	79½"	79½"	79½"	79½"	79½"
Interior Width	98½"	98½"	98½"	98½"	98½"	98½"	98½"	98½"
Exterior Width	102"	102"	102"	102"	102"	102"	102"	102"
TANK CAPACITIES	5320	5342	5355	5375	6320	6342	6355	6375
Water Heater	10 gal.	10 gal.	10 gal.	10 gal.	10 gal.	10 gal.	10 gal.	10 gal.
Gray Tank	45 gal.	60 gal.	60 gal.	60 gal.	45 gal.	60 gal.	60 gal.	60 gal.
Black Tank	45 gal.	47 gal.	47 gal.	42 gal.	45 gal.	47 gal.	47 gal.	42 gal.
Fresh Water Tank(s)	80 gal.	80 gal.	80 gal.	72 gal.	80 gal.	80 gal.	80 gal.	72 gal.
LP-Gas Tank (Volume W.C.)	24.2 gal.	24.2 gal.	24.2 gal.	24.2 gal.	24.2 gal.	24.2 gal.	24.2 gal.	24.2 gal.

Due to continued product improvement, National R. V., Inc. reserves the right to change materials, colors, specifications and prices at any time without notification. Copyright © 2004 by National R. V., Inc. 01/04

DOLPHIN 2004 FEATURES & SPECIFICATIONS

DOLP	DOLX
BODY CONSTRUCTION	
• •	Duraframe® patented steel sub floor construction
• •	Steel framed laminated floor
• •	Steel framed crowned laminated fiberglass roof
• •	Steel framed laminated fiberglass high gloss walls
• •	Front and rear molded high gloss fiberglass caps
• •	Full panoramic tinted windshield
• •	Soft fabric ceiling material
• •	Electric slide-out room with overhead cabinets (flush floor on lounge slide models only)
• •	Insulated fiberglass exterior storage compartment doors with integrated paddle latches and gas struts
• •	Steel framed exterior storage compartments with insulated bottoms
• •	Lighted storage compartments and service area
• •	Exterior assist handle
• •	Aluminum rear ladder
• •	Awning rail/rain gutter with drip spouts
• •	Automotive undercoating
• •	Steel insulated front bulkhead
• •	Custom combination paint and vinyl exterior graphics with three available color schemes
• •	Custom vinyl exterior graphics with two available color schemes
COCKPIT FEATURES	
• •	Big button AM/FM cassette stereo and CD with four speakers
• •	Driver and passenger bullet reading lights with switches
○ •	Multi-disc CD changer
• •	Custom dash in dark gray matte grid finish with full gauge package
• •	Convenience tray
• •	Audible turn signals
○ •	Chrome electric horns
• •	Pantographic windshield wipers
• •	Power steering
• •	Cruise control
• •	Tilt steering wheel
• •	Oversized steering wheel with power steering
• •	Rear vision system with built-in microphone
• •	Overhead dash fans (2 speed)
• •	Power heated double convex rear view mirrors
• •	Passenger work station with 12V/120V receptacle and phone jack in console
• •	Aviation style sun visors
○ ○	Electric sunvisors
• •	Hydraulic leveling jacks with dash mounted controls
• •	Generator hour meter and auxiliary start switch on dash
• •	Exterior temperature sensor
• •	Wraparound privacy curtain with easy reach wand
APPLIANCES & ACCESSORIES	
• •	8 cu. ft. double door refrigerator and pantry
○ •	10 cu. ft. double door refrigerator with icemaker and pantry
○ ○	12 cu. ft. Norcold® four door refrigerator with ice maker (delete pantry) <i>N/A 5320 AND 6320</i>
• •	High output three burner cooktop with drawers below with flush mount Corian® range cover

DOLP	DOLX
○ ○	21" high output three burner cooktop with range/oven and flush mount Corian® range cover
• •	GE® SpaceSaver convection microwave oven with carousel, built-in light and fan
• •	Cable TV hook-up and multiple telephone jacks
• •	TV antenna
• •	RCA® 27" flat screen TV in cockpit
• •	RCA® 19" TV with front A/V jacks in bedroom
• •	RCA® 20" flat screen TV with front A/V jacks in bedroom
○ ○	Exterior entertainment package: Includes a 19" RCA stereo TV, AM/FM stereo with CD on a swivel base located in an exterior compartment on a full-extension slide tray with two fixed speakers mounted by the exterior TV
○ •	Home theater entertainment package: Includes an RCA® DVD digital receiver and five speaker/subwoofer system
• •	RCA® DVD player
• •	Video control box with antenna boost
• •	Pre-wired for the Kingdome® satellite dish
○ ○	Kingdome® automatic stationary satellite dish
FURNITURE	
• •	Kustom Fit® fabric 6-way power driver recliner seat with swivel base
• •	Kustom Fit® fabric passenger recliner seat with swivel base
○ •	Kustom Fit® soft touch OptimaLeather® cockpit seating package: Includes a soft touch OptimaLeather® 6-way power driver seat with swivel base and a soft touch OptimaLeather® manual passenger seat with swivel base
○ •	Kustom Fit® soft touch OptimaLeather® manual extra-wide passenger recliner seat with swivel base
○ •	Kustom Fit® soft touch OptimaLeather® cockpit seating package including a soft touch OptimaLeather® 6-way power driver seat with swivel base and soft touch OptimaLeather® extra-wide passenger seat with swivel base
• •	Kustom Fit® Wonder-Bed® fabric sleeper sofa with slide-in armrests
○ ○	Kustom Fit® Wonder-Bed® soft touch OptimaLeather® sleeper sofa with slide-in armrests
• •	Kustom Fit® freestanding fabric swivel recliner chair with footrest
• •	Kustom Fit® freestanding soft touch OptimaLeather® Euro-recliner with ottoman
○ •	Kustom Fit® freestanding soft touch OptimaLeather® swivel recliner chair with footrest
INTERIORS	
Throughout Coach	
• •	Maple paneling and doors
○ •	Cherry paneling and doors
○ ○	Sterling and Heritage packages (see sidebar)
• •	Telestrut hardware on overhead doors and positive catches on others
• •	Drawers with ball bearing roller guide design
Cockpit Area	
• •	Floor mats

DOLP	DOLX
Living Area	
• •	Booth dinette with slide-out storage drawers
○ •	Dinette cabinet/table with built-in table extension, two high-back wooden chairs and two wooden folding chairs <i>N/A 6320</i>
○ •	Dinette cabinet/table with built-in table extension, two low-back wooden chairs and two wooden folding chairs <i>N/A 5320</i>
• •	Plush carpet with deluxe pad
• •	Day/night shades with designer valances
• •	Hutch and overhead with beveled mirror <i>5355 AND 6355</i>
• •	Solid raised panel cabinet doors
Kitchen Area	
• •	Slide-out pantry (not available with 12 cu. ft. refrigerator option)
• •	Corian® kitchen countertop with Corian® flush mount stove cover
• •	Corian® countertop extension <i>N/A 5375 AND 6375</i>
• •	Beveled mirror above galley backsplash
• •	Swanstone® high-line under-mount or Large Stainless steel kitchen sink with Corian® sink covers (varies with décor package)
• •	Porcelain sink with wood cutting block sink cover
• •	Wastebasket
• •	Designer vinyl flooring
• •	Ceramic tile flooring with inlaid tile accents
• •	Venetian mini-blind with valance
• •	Molded ABS silverware organizer
Bath Area	
• •	Ceramic tile flooring with inlaid tile accents
• •	Designer vinyl flooring
• •	Decorative shower glass etching
• •	Corian® lavy top
• •	Laminate lavy top with decorative edge
• •	Medicine cabinet
• •	Dresser cabinet with four drawers (washer/dryer prep) <i>5355, 5375, 6355 AND 6375</i>
○ ○	Combination washer/dryer <i>5355, 5375, 6355 AND 6375</i>
Bedroom Area	
• •	Plush carpet with deluxe pad
• •	Day/night shades with designer valances
• •	Cedar lining in wardrobe
• •	Sliding mirrored wardrobe doors with drawers below
• •	Bedspread, pillows and shams
• •	Wall dresser with drawers and laundry hamper <i>5342 AND 6342</i>
• •	Slide-out queen bed with pull out drawers and storage compartment <i>N/A 5375 AND 6375</i>
• •	"Sandpiper Deluxe" residential-style pillow top mattress (60" x 80")

DOLP	DOLX
ELECTRICAL SYSTEMS & LIGHTS	
● ●	55 Amp MagneTek® solid state power converter and charger
● ●	50 Amp 120V distribution panel and cord
● ●	12V push button circuit breaker distribution panel
● ●	Onan® Marquis series generator
● ●	600 watt inverter
○	2,000 watt inverter/converter with remote on/off switch and four 6V deep cycle house batteries
● ●	Two 6V deep cycle house batteries
● ●	Battery disconnect switch for house batteries
● ●	Systems monitor panel
● ●	Porch light with interior switch
● ●	12V/120V patio receptacle and phone jack
● ●	Recessed fluorescent lights in ceiling with wall mounted switches
● ●	Designer light fixtures in living and bedroom areas
● ●	Cosmetic light in bathroom
● ●	Two water pump switches (kitchen and bath)
● ●	10 watt solar panel (mounted on roof)
● ●	Battery voltage meter in monitor panel
● ●	GFI protected electrical circuit
● ●	Courtesy light at entry door switch panel
PLUMBING & LPG SYSTEMS	
Coach Exterior	
● ●	Heated systems compartment with easy access to hook-ups
● ●	On demand water system and water pump
● ●	Holding tank rinse system (black tank only)

DOLP	DOLX
● ●	Winterization anti-freeze inlet to pump
● ●	Outside shower
● ●	Water heater bypass valve
● ●	Pressurized water fill with integrated regulator
● ●	10 gallon, quick-recovery water heater with direct spark ignition (gas/electric)
Kitchen Area	
● ●	Water filter
● ●	Single lever faucet with side sprayer
Bath Area	
● ●	One-piece fiberglass angled shower with seat <i>TUB/SHOWER 5375 AND 6375</i>
● ●	Residential single lever shower faucet
● ●	Porcelain toilet with sprayer
● ●	Single lever lavvy faucet
SAFETY FEATURES	
● ●	Daytime running lights
● ●	Driver and passenger three point seatbelts
● ●	Deadbolt lock on entry door
● ●	Fire extinguisher
● ●	Smoke, carbon monoxide (CO) and LPG detectors
● ●	Emergency exit window
WINDOWS, DOORS & AWNINGS	
● ●	Dual pane radius tinted safety glass windows
● ●	Patio awning with metal cover (electric awning with triple slide unit)
○ ○	Living room and bedroom window awning package
● ●	Bedroom rear picture window

DOLP	DOLX
● ●	Radius entrance door with clear glass, shade and screen door
● ●	Power double entrance step with light and anti-skid surface
● ●	Ventilated windows on sides of slide-out rooms (lounge slides only)
● ●	Slide-out topper awnings
● ●	Private toilet room with window <i>N/A 5342 AND 6342</i>
● ●	Tinted skylight in bathroom
CLIMATE CONTROL	
● ●	Coleman® 2-Ton high efficiency basement mounted air conditioner and heat pump with ceiling ducting
● ●	35,000 BTU electronic ignition furnace (dual 35,000/20,000 BTU electronic ignition furnace on 5375 and 6375)
● ●	Ducted heating system
● ●	12V Fan-Tastic® Vent with wall thermostat and rain sensor in galley/living area
● ●	12V roof exhaust fan in bathroom
● ●	Non-powered roof vent in bedroom
● ●	Dash automotive heating and air conditioner system with defroster



DÉCOR PACKAGES

Sterling Package:

- Stainless steel appliances and hardware
- Maple standard with available Walnut
- Custom paint and vinyl exterior graphics
- Corian® countertops throughout
- Ceramic tile flooring with inlaid tile accent
- Upgraded fabrics

Heritage Package:

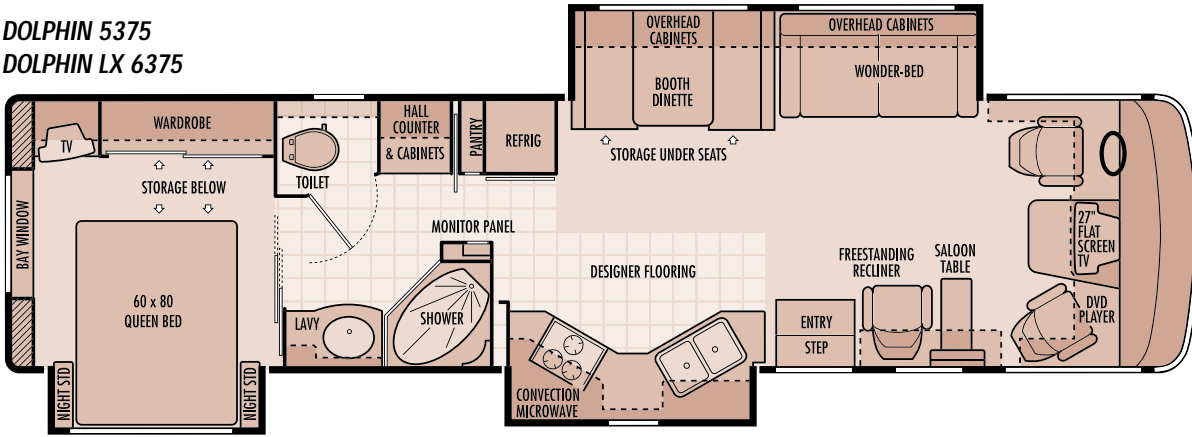
- Maple standard with available Cherry
- Custom paint and vinyl exterior graphics
- Corian® countertops throughout
- Ceramic tile flooring with inlaid tile accent
- Upgraded fabrics

WORKHORSE® CHASSIS	W-22	W-24
	All floorplans except 6375	6375 only
<i>Tires</i>	Michelin® XRV 235/80 R22.5G	Michelin® XRV 235/80 R22.5G
<i>Wheels</i>	22.5X6.75, 8-Lug Steel, SS Liner	22.5X6.75, 8-Lug Steel, SS Liner
<i>Brakes</i>	Hydro-Boost, 4-Wheel Disc ABS	Hydro-Boost, 4-Wheel Disc ABS
<i>Drive Axle Gear Ratio</i>	5.38:1	5.38:1
<i>Alternator</i>	130 Amp	130 Amp
<i>Chassis Batteries</i>	(1) 690 CCA	(1) 690 CCA
<i>Shock Absorbers</i>	Tuned Monroe®	Tuned Monroe®
<i>Fuel Tank Capacity</i>	75 Gallons	75 Gallons
<i>Hitch Capacity</i>	5,000 lbs. Class III**	5,000 lbs. Class III**
<i>Chassis Warranty</i>	3 years/36,000 miles	3 years/36,000 miles
GM® VORTEC® 8100 ENGINE		
<i>Displacement</i>	8.1 Liters (496 cu. in.)	8.1 Liters (496 cu. in.)
<i>Peak Horsepower</i>	340 HP @ 4,200 RPM	340 HP @ 4,200 RPM
<i>Peak Torque</i>	455 ft./lbs. @ 3,200 RPM	455 ft./lbs. @ 3,200 RPM
<i>Engine Warranty</i>	3 years/36,000 miles	3 years/36,000 miles
ALLISON® 1000 TRANSMISSION		
<i>Transmission Type</i>	5-Speed Automatic Overdrive	5-Speed Automatic Overdrive (push button shifter for 6375)
<i>Transmission Warranty</i>	3 years/Unlimited miles	3 years/Unlimited miles

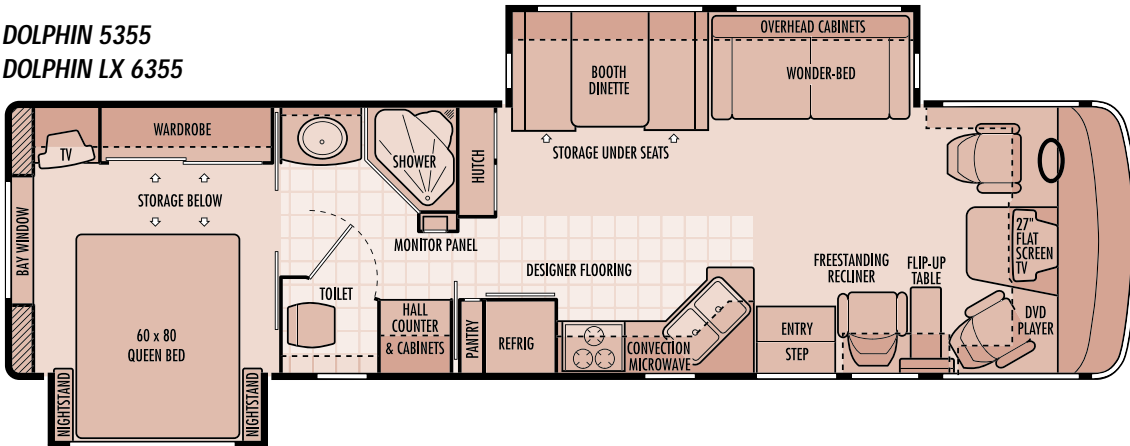
** Actual towing capacity is dependent on your particular loading and towing circumstances which includes GVWR, GAWR and GCWR as well as adequate trailer brakes. Please refer to your vehicle operator's manual for further towing information. Due to continued product improvement, National R. V., Inc. reserves the right to change materials, colors, specifications and prices at any time without notification. Copyright © 2004 by National R. V., Inc. 01/04

DOLPHIN 2004 FLOORPLANS

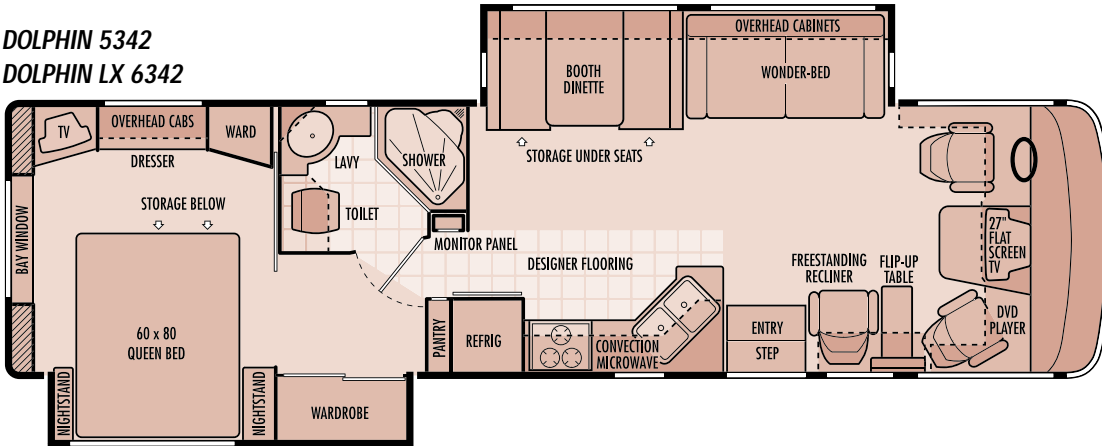
**DOLPHIN 5375
DOLPHIN LX 6375**



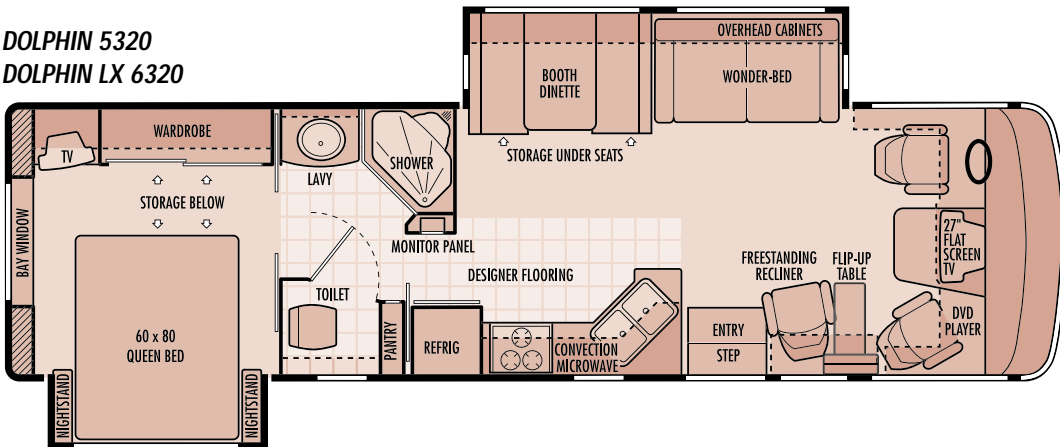
**DOLPHIN 5355
DOLPHIN LX 6355**



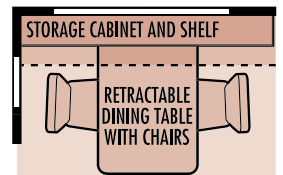
**DOLPHIN 5342
DOLPHIN LX 6342**



**DOLPHIN 5320
DOLPHIN LX 6320**



AVAILABLE OPTIONS:



Retractable dining table with chairs
on DOLP 5342, 5355, 5375,
DOLX 6342, 6355 and 6375
REPLACES BOOTH DINETTE



Washer and Dryer
on DOLP 5355, 5375,
DOLX 6355 and 6375
REPLACES HALL COUNTER AND CABINETS



10 cu. ft. refrigerator with ice maker
for DOLP



12 cu. ft. refrigerator with ice maker
on DOLP 5342, 5355, 5375,
DOLX 6342, 6355 and 6375
REPLACES STANDARD PANTRY
AND REFRIGERATOR

Due to continued product improvement, National R. V., Inc. reserves the right to change materials, colors, specifications and prices at any time without notification. Copyright © 2004 by National R. V., Inc. 01/04

For more of everything
National RV Inc. related
join us at NRVCLUB.com



National RV Club (NRVC) is not affiliated with any other club or organization.
NRVC has no relationship with the defunct National R.V. Inc. or National R.V. Holdings.
NRVC has no relationship with REV Group, REV Recreation Group, or their motor home brands.