



D O L P H I N

M O T O R H O M E S

You Can Have It All!

Dolphin full basement motorhomes are popular for one good reason. They're unbeatable in terms of standard amenities, innovative features, and long-term value. Fact is, only Dolphin brings you high-line styling at such affordable prices. Its dramatic contours feature a bus-type front end with full fiberglass cap and single-piece, high-gloss fiberglass Mende Board sidewalls.

Outstanding choices are another Dolphin tradition. Select from a variety of gas and diesel models with expansive 102" wide bodies. And yes, we offer slide-out rooms for extra spaciousness. However, you won't see a lot on the option list, since Dolphins come richly featured with a wealth of standard equipment. If you need it, we include it - at no extra cost!

Along with this exceptional value comes ongoing innovation. Always eager to improve on an already excellent motorhome, National RV has much more to offer you for 1996. For instance, there's a bright new look with exciting exterior graphics and distinctive surf blue accents on the lower body. Smaller, but equally impressive upgrades include a wide side entry door, new porch light and exterior grab rail. We've also made the windows 3" taller to bring in more of the great outdoors.

Inside and out, amenities abound. Catering to your traveling convenience, sculptured fiberglass baggage doors open to ample outside storage with easily accessed illuminated compartments. Master suites, galleys, and baths are among the finest you'll find. Typical of National RV products, our value-packed Dolphin motorhomes invite your closest comparison

Take a personal tour of Dolphin's five exciting new 1996 floor plans at your nearest dealer. Discover how *you can have it all* - at a price that can make your dreams come true today!



Expand Your Expectations

Available on gas and diesel models, Dolphin's slide-out room provides an additional 34.8 square feet of sumptuous living accommodations. Highlights include a dramatic free-standing oak dinette, an extremely comfortable hideaway sofa/sleeper combination, and a totally redesigned extra-large galley.

The new galley deserves special comment. There's more storage space than ever, with an added china cabinet. Work space has grown as well, with an expanded Corian counter top in a U-shape that contributes greatly to meal preparation ease. We've also incorporated a new GE microwave oven with built-in range hood and light. Even the kitchen sink is bigger! And handsome oak trim is utilized throughout.

Complementing the beauty of our traditionally popular raised panel cabinetry is a clever new folding Corian counter top which conceals the range when not in use.



See Why You're Way Ahead With Dolphin

National RV coaches set high standards on every feature from top to bottom. Each Dolphin motorhome is protected by a leak-proof, thoroughly insulated rubber roof to assure your long-term comfort. Look closely, and you'll see that our roofs have more steel cross members than most. Note also the new rain gutters and drip spouts.



Check out our handsome new high-gloss gel-coat walls and sleek fiberglass rear cap with built-in spare tire compartment. Less obvious is a new holding tank flush system for simple cleaning. Chassis construction incorporates a heavy gauge galvanized sub-floor installed directly on the frame.

Superior Construction

From the moment we opened our doors in 1963, National RV began building a reputation for superior products. Because we know that there are no shortcuts to quality, we have always insisted on the most thorough engineering, the best materials, and the finest craftsmanship.

Our company-wide commitment to excellence pays off for you. The National RV motorhome you purchase today is designed and constructed to contribute to your traveling enjoyment for many carefree years.



State-of-the-art fiberglass manufacturing holds to tight tolerances and achieves the highest levels of quality.



Custom designed furniture receives its finishing touches in our factory to guarantee high levels of quality and comfort.



Extensive undercoating is applied to each unit to provide properly sealed compartments and to enhance sound deadening.



National RV's modern facilities are designed for smooth, error-free automated production every step of the way.



After being aligned on the most advanced electronic equipment, every National RV motorhome is road tested for ride and handling.



Each unit is thoroughly rain-tested before delivery. This important step helps assure a water-tight motorhome.

Specifications

VEHICULAR DRIVING AREA

- Gas Engine: Chev 454 CID, 7.4L, V-8 EFI
- Gas Engine: Ford 7.5L, V-8 EFI
- Diesel Engine: Cummins 230 HP, 359 CID, 5.9L
- Radial Tires
- Tilt Steering Wheel
- Cruise Control
- In-Dash Heat & Air Conditioning
- Full Panoramic Wrap-Around Tinted Windshield
- Panographic Windshield Wipers w/Intermittent Speed Control
- Map Light
- Cigarette Lighter
- Reclining Bucket Seats w/Swivel
- Protector Sun Visors
- AM/FM Auto Reverse Stereo Cassette
- Wheel Covers
- Deluxe Exterior Mirrors w/ Convex
- Alternator AMPS:
 - 105 Amp Chevrolet
 - 130 Amp Ford
 - 100 Amp Freightliner
- Power Steering/Brakes
- Auxiliary Start System
- Three Point Seat Belts

GAS FEATURES

- Engine Oil Cooler
- Overdrive Automatic Transmission
- Electric Fuel Pump
- Parking Brake
- Transmission Oil Cooler

EXTERIOR FEATURES

- Full Fiberglass Front and Rear Caps
- High Gloss Gel-Coat Side Walls - Mende Board
- Insulated Fiberglass Baggage Doors
- Rubber Roof
- Brushed Stainless Steel Front Bumper
- Radius Windows
 - Sliders in Living Room
 - Jalousie in Bedroom/Galley
- Tinted Windows w/Screens

- Rain Gutters with Drip Spouts
- Dead Bolt Lock
- City Water Hook Up
- Water Fill w/ Switch Over Valve
- Holding Tank Flush System
- Spare Tire Cover - Gas
- Outside Porch Light
- Lighted Cargo Bins
- Radius Entrance Door
- Insulated Cargo Bin Floors
- Outside Shower

INTERIOR FEATURES

- Double Porcelain Sink in Galley
- Recessed Fluorescent Lights
- Oak Framed Raised Panel Cabinet Doors in Lounge
- Decorative Mirrored Doors in Lounge & Bedroom
- Oak Trim Throughout
- Deluxe Highline Carpet & Pad Throughout
- Vinyl Floor in Galley
- Pantry
- Privacy Door(s) - Sliding
- Built-In Waste Can
- Oak Drawer Fronts
- Custom Designed Interior Decor of Woven Jacquard Olefin
- Color Coord. Mini Blinds w/Designer Valances in Bedroom
- Fabric Ceiling
- Color Coord. Bedspread, Shams & Pillows
- Beveled Dressing Mirror
- Skylight in Shower
- Single Lever Galley Faucet
- Fire Extinguisher
- Recessed Cook Top
- Flush Corian Stove Top Cover
- Padded Dinette End Caps
- Coach Ceiling Vents
- Corian Sink Cover
- Corian Galley Counter
- Day/Night Shades in Lounge Area

APPLIANCES & ELECTRICAL

- Double Door Dometic Refrigerator (LP/110V) - 6'
- TV Antenna w/ Amplifier
- TV/VCR/Cable Switching
- Coffee Maker
- 110 Amp Deep Cycle House Battery
- GFI Protected Electrical Circuit
- 120V/12V/ 55 Amp Power Converter Charger
- 3-Burner Cook Top
- Power Range Hood w/ Light
- Demand Water Pump
- Smoke Alarm CO/LPG Detectors
- Systems Monitor Panel to Measure Tanks, Battery & Propane
- Intellitac Runs Two Roof A/Cs on 30 Amp Service
- Cable TV Hookup
- Fluorescent Lights
- Chandelier Light w/ Wall Sconce
- Furnace w/ Ducted Floor Heat: 35,000 BTU
- 19" TV w/ Remote
- Phone Jack
- Hair Dryer
- Dust Buster
- Toaster Oven

OPTIONAL FEATURES

- Generator: 5.5 KW (Gas Models)
- Generator: 6.6 KW (LP) (Diesel Models)
- DSI Hot Water Heater
- Class III Trailer Hitch
- Overhead Dash Fans
- Power Entrance Step
- Drink Tray
- Roof Rack and Ladder
- Power Heated Mirrors
- Dual Central Air Conditioner
- Battery Disconnect Switch
- 8' Dometic Refrigerator
- Microwave Oven
- Water Filter
- Solar Battery Charger
- Plank Floor in Galley w/ Carpet Runner
- Second House Battery
- Water Heater By-Pass

- Back-Up Camera
- Ice Maker for 8' Refrigerator
- 10' Side-By-Side Dometic Refrigerator w/ Ice Maker
- Thermostatic Vent Fan
- LP Gas Oven
- VCR
- 13" Bedroom TV w/Remote
- AM/FM Radio in Bedroom
- CD Changer w/ Dash Stereo Control
- Twin Beds (Gas Models Only)
- Exterior Electric Horns
- Stainless Steel Wheel Inserts
- Convection Microwave Upgrade
- Awning - A&E
- Hydraulic Leveling Jacks
- Wonder Bed Sofa
- 6-Way Power Driver Seat
- 400 Watt Inverter
- Alarm System w/ Remote
- Large Co-Pilot Seat
- Insulated Windows - Thermopane
- 43.4 LPG Tank (Diesel)
- Built-In Vacuum Cleaner

- Porcelain Toilet
- Washer/Dryer (535/635)
- Engine Block Heater - Diesel Models
- Air/Hydraulic Brakes - Diesel Models
- Booth Dinette (535/635)
- CSA

Note: ■ Denotes built on all units.

Specifications / Dimensions / Capacities

DIMENSIONS	533A	533L	534G	535 Ford	535 Chev	635 Diesel
Overall Length	34' 4"	34' 4"	35' 8"	36'	36'	34' 10"
Overall Height w/Air	11' 8"	11' 8"	11' 8"	11' 8"	11' 8"	11' 9"
Overall Width	8' 6"	8' 6"	8' 6"	8' 6"	8' 6"	8' 6"
Interior Height	6' 7"	6' 7"	6' 7"	6' 7"	6' 7"	6' 7"
Interior Width	8' 2"	8' 2"	8' 2"	8' 2"	8' 2"	8' 2"
CAPACITIES (Gallons)	533A	533L	534G	535 Ford	535 Chev	635 Diesel
Fresh Water	100	100	100	100	100	100
Hot Water	6	6	6	6	6	6
Waste Water Holding Tank	50	50	50	50	50	50
Gray Water Holding Tank	50	50	50	50	50	50
LP Gas Capacity	24	24	24	24	24	43
Fuel	75	75	75	75	80	90
CHASSIS	Ford	Ford	Ford	Ford	Chev	Freightliner
Wheel Base	228"	228"	228"	208"+43" Tag	208"+43" Tag	208"
GCWR - lbs.	25,000	25,000	25,000	25,000	19,500	25,000
GVWR - lbs.	17,000	17,000	17,000	20,000	19,500	20,500
Unladen Weight - lbs.*	14,800	14,800	14,830	17,150	16,550	18,220
Payload - lbs	2,200	2,070	2,170	2,850	2,950	2,280

* Unladen weight includes full fuel, roof air conditioning, generator, and microwave. The 535 and 635 also include jacks and camera.

Floor Plans

Engine, Chassis & Power Train Choices

Gas models are available on Ford or Chevrolet chassis. Diesel units are built on Freightliner chassis. Standard drive train is a turbo-charged 230 HP and also includes a 6-speed automatic transmission. See specifications chart for gas and diesel models.



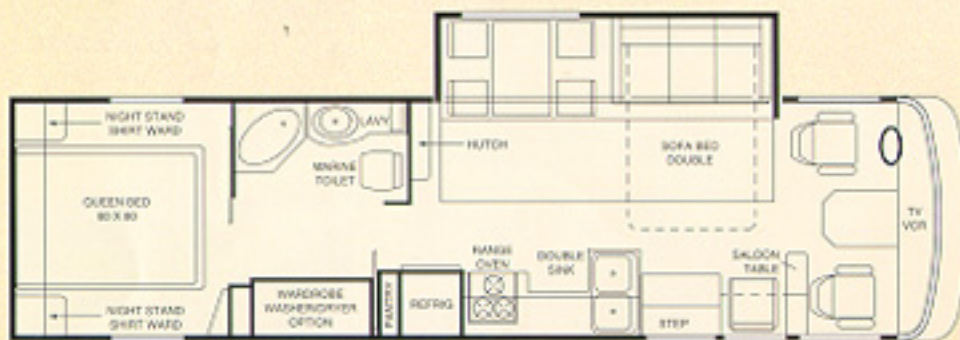
Model 533L



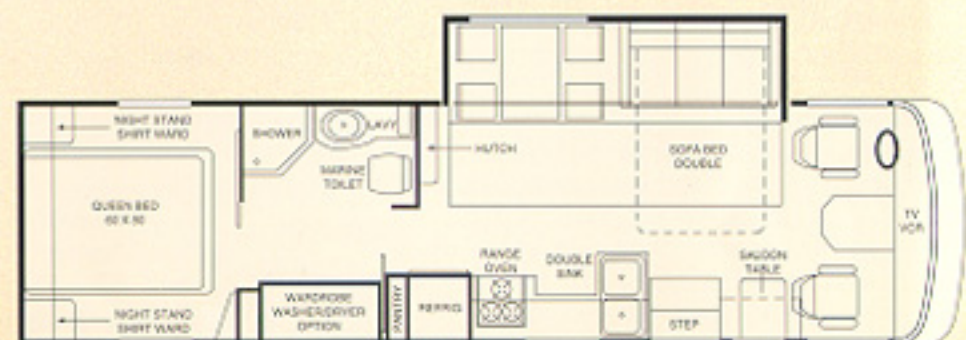
Model 533A



Model 534G



Model 535-S (Slide-Out)



Model 635-S (Slide-Out)

Incomparable Interiors

Dolphin's spacious, gracious coaches are big on comfort and interior amenities, so come in and look around! Entry is easier than ever, thanks to a new wider step well with non-slip rubber treads. Once inside, tall folks in particular will appreciate the extra 3" of headroom added this year. We've recently done some redecorating to make you feel even more at home. Ease into an ultra-comfortable barrel chair or the stylish new sofa. An upgraded lighting system warms up the living areas while a new ducted floor heating system is a nice, cozy addition. What a great place to relax at the end of another glorious day on the road!



Our inviting designer interiors further pamper you with woven Jacquard Olefin fabrics, deluxe carpeting, sound-dampening fabric ceilings, plus day/night shades with an elegant valance in the living room. Decorative mirrored doors in the lounge contribute to that feeling of openness, as do our space-saving pocket doors.

Quality touches also include cedar-lined closets, raised panel oak frame cabinetry, and oak trim throughout. For easy, trouble-free operation, our all-wood drawers feature ball-bearing glides.

For exceptional convenience when you're on the road for extended touring, all Dolphins contain a full 100 gallons of water plus an equal amount of holding tank storage.



Elegant fabrics impart an inviting designer touch to every Dolphin model.





Large Garden Bath. There are luxury features galore. A domed skylight adds greatly to the feeling of spaciousness. The attractive glass-enclosed shower is replete with handsome goldtone fixtures and trim, sinks have been enlarged, and a hair dryer has been added for your convenience.



Elegant Master Suite. Maximum use of interior space is utilized in the smartly designed bedroom. A larger mirror, graced with new Dolphin graphics, really opens up the room. Together, the expansive 3-door wardrobe and night-stand offer a dozen storage drawers. Exclusive this year on all models is a new queen bed measuring 60" x 80", which is a full 5" longer than before.

Dealer



24-Hour Toll-Free Help Line

As an original Dolphin owner, you can call toll-free, anytime, for expert advice on any problem you might have. (Good for one year from date of purchase. Non-transferable program can be extended for a nominal fee.)

NATIONAL RV
EXCLUSIVE DEALER
COACH NET
2001 P.O. BOX 1000

Dolphin

National R.V., Inc.
 3411 N. Perris Blvd., Perris CA 92571 • 909-943-6007

Copyright 1995, National R.V., Inc. 12995 50M

For more of everything
National RV Inc. related
join us at NRVCLUB.com



National RV Club (NRVC) is not affiliated with any other club or organization.
NRVC has no relationship with the defunct National R.V. Inc. or National R.V. Holdings.
NRVC has no relationship with REV Group, REV Recreation Group, or their motor home brands.